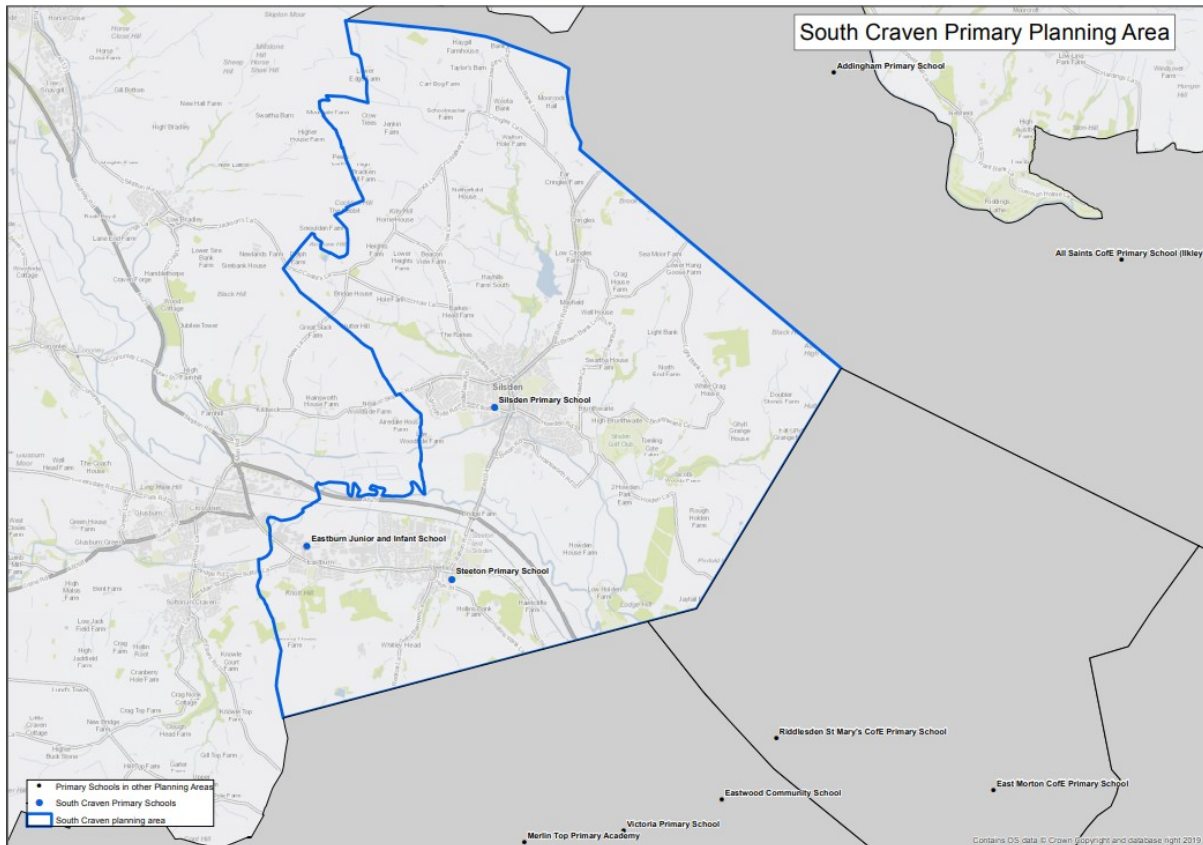


## South Craven Primary School Planning Area

There are three primary schools in South Craven planning area, one of which has nursery provision. The area is mainly rural and covers Silsden, Eastburn and Steeton.

School name	School Type	Multi Academy Trust (MAT)	Published Admission Number (PAN)	Nursery provision
Eastburn Junior and Infant School	Community	-	30	No
Silsden Primary School	Community	-	90	Yes
Steeton Primary School	Community	-	45	No

Map showing primary schools in the South Craven planning area:



## Historic numbers of pupils in South Craven

The table below provides historical information on the total number of reception places available (PAN) and number of reception pupils on roll. The total number of school places available is shown against the total number on roll (NOR) to give an overall number and percentage of surplus places (shown as a minus where there is a shortfall).

Year	PAN	Pupils in reception	Spare reception places	Total Places	Total NOR	Surplus places	% Surplus places
2016	165	158	7	1115	1043	72	6.46%
2017	165	157	8	1117	1072	45	4.03%
2018	165	136	29	1144	1073	71	6.21%
2019	165	159	6	1144	1087	57	4.98%
2020	165	156	9	1144	1107	37	3.23%
2021	165	152	13	1144	1113	31	2.71%
2022	165	139	26	1093	1144	51	4.46%

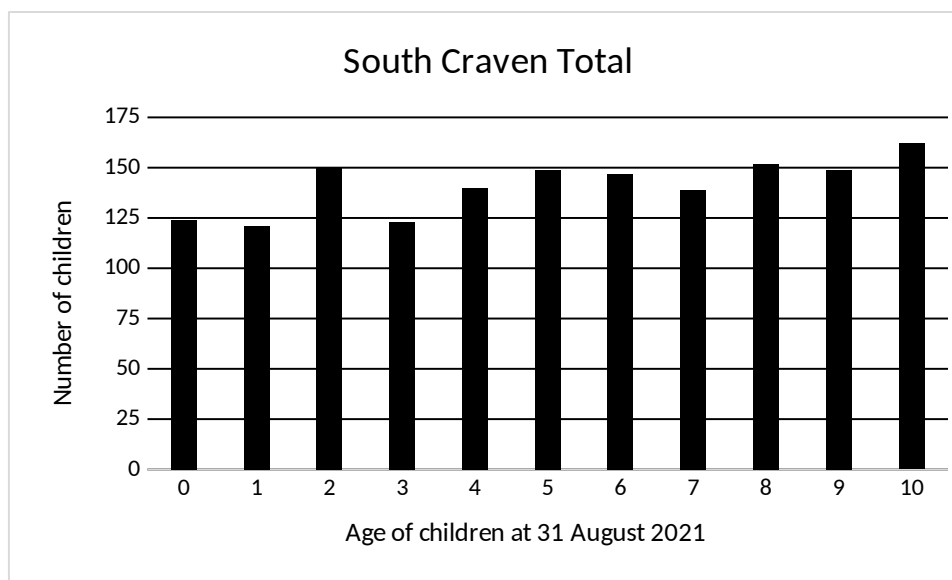
## Historic changes and academy conversions

- Aire View Infants became a primary school from September 2017 with provision for reception to year 6 pupils on a split site initially, and also changed its' name to Silsden Primary School.
- Hothfield School closed in August 2017, children and staff transferred to Silsden Primary School.
- Silsden Primary School moved to their new school building with all age groups on one site in January 2022.

## Health Authority Data for South Craven

The number of children recorded in the January 2022 data received from the Health Authority is shown below:

Age at 31 August 2021	0	1	2	3	4	5	6	7	8	9	10
<b>South Craven Total</b>	<b>124</b>	<b>121</b>	<b>150</b>	<b>123</b>	<b>140</b>	<b>149</b>	<b>147</b>	<b>139</b>	<b>152</b>	<b>149</b>	<b>162</b>
Reception Intake Year	2025	2024	2023	2022	-	-	-	-	-	-	-
Year 7 Intake Year	2032	2031	2030	2029	2028	2027	2026	2025	2024	2023	2022



### Forecast methodology for South Craven

The need for primary school places depends on the local child population. Key factors in the forecast are the number of births and children registered with the Health Authority in an area, migration in and around the District and movement of families into new housing developments.

The take up rate of 82% is applied to the health data and the table below shows the calculated number of Reception places required for South Craven residents in the coming years.

Year of reception intake	2022	2023	2024	2025	2026
Calculated places required	102	125	99	98	94

In addition to these figures, forecasts incorporate trends for children attending schools outside of their local planning area. For South Craven, the highest number of children coming in have been from Keighley 1; the highest number attending elsewhere have gone to schools in Wharfe Valley. Historically, a handful of children have attended schools here from outside of the District.

## Forecasts and historic accuracy for South Craven

The tables below contain forecast data submitted to the DfE as part of the annual Schools Capacity (SCAP) return. The grey column shows the comparison (accuracy) of last year's forecast with the (actual) number of pupils on roll at the schools at the January school census.

### Reception:

Year	2021	2022	2023	2024	2025	2026
PAN	165	165	165	165	165	165
<b>Forecast</b>	<b>149</b>	<b>140</b>	<b>165</b>	<b>135</b>	<b>134</b>	<b>128</b>
Surplus	16	25	0	30	31	37
% Surplus	9.7%	15.2%	0%	18.2%	18.8%	22.4%
<b>Actual</b>	<b>152</b>	-	-	-	-	-
Difference	-3	-	-	-	-	-
Accuracy	98.0%	-	-	-	-	-

### Reception to Year 6:

Year	2021	2022	2023	2024	2025	2026
Total Capacity	1144	1144	1144	1144	1144	1144
<b>Forecast</b>	<b>1097</b>	<b>1093</b>	<b>1108</b>	<b>1089</b>	<b>1081</b>	<b>1057</b>
Surplus	47	51	36	55	63	87
% Surplus	4.1%	4.5%	3.1%	4.8%	5.5%	7.6%
<b>Actual</b>	<b>1113</b>	-	-	-	-	-
Difference	-16	-	-	-	-	-
Accuracy	98.6%	-	-	-	-	-

Note that a PAN decrease does not automatically affect the net capacity of the school. Total Capacity, as calculated above, is based on the capacity of the buildings and will only be amended if significant changes are made to the use of space. Capacity here is therefore the maximum number of potential school places; however, the maximum deliverable places in any year will be dependent on factors such as the number of classes schools are staffed to teach.

### Planned / possible action

The Local Authority will continue to monitor the number of children and parental preference in this planning area.

Consultation to reduce the PAN at Steeton Primary School from 45 to 30 from 2024 will begin in autumn 2022.