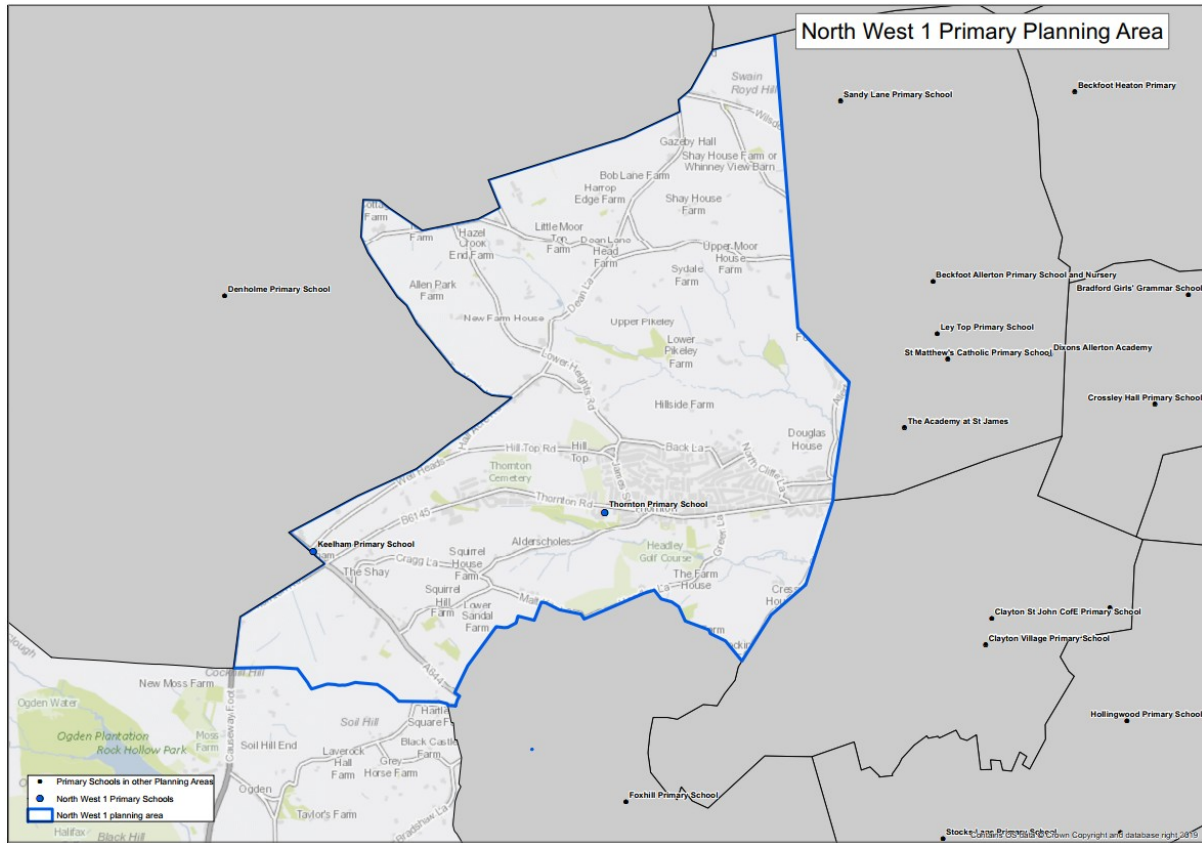


# North West 1 Primary School Planning Area

There are just two primary schools in North West 1 planning area, both of which have nursery provision. The area is mainly rural and covers the village of Thornton.

School name	School Type	Multi Academy Trust (MAT)	Published Admission Number (PAN)	Nursery provision
Keelham Primary School	Foundation		15	Yes
Thornton Primary School	Academy	Focus Academy Trust (UK) Ltd	60	Yes

Map showing primary schools in the North West 1 planning area:



## Historic numbers of pupils in North West 1

The table below provides historical information on the total number of reception places available (PAN) and number of reception pupils on roll. The total number of school places available is shown against the total number on roll (NOR) to give an overall number and percentage of surplus places (shown as a minus where there is a shortfall).

Year	PAN	Pupils in reception	Spare reception places	Total Places	Total NOR	Surplus places	% Surplus places
2016	105	93	12	732	692	40	5.46%
2017	105	100	5	732	681	51	6.97%
2018	105	81	24	735	658	77	10.48%
2019	105	89	16	735	646	89	12.11%
2020	105	79	26	735	627	108	14.69%
2021	105	78	27	735	595	140	19.05%
2021	75	75	0	578	735	157	21.36%

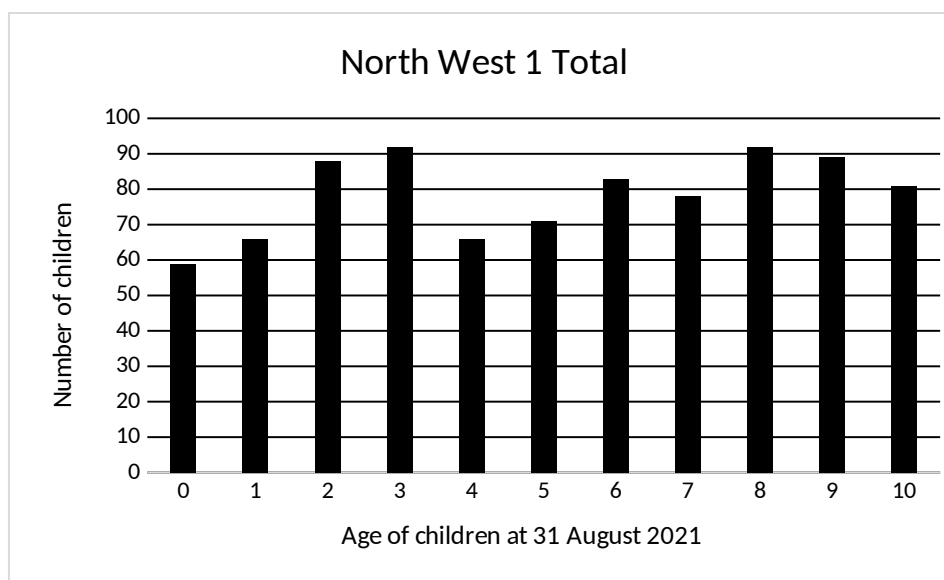
## Historic changes and academy conversions

- Thornton Primary School converted to academy status in February 2017 under the Focus Academy Trust.
- Thornton Primary School reduced their PAN from 90 to 60 from September 2022.

## Health Authority Data for North West 1

The number of children recorded in the January 2022 data received from the Health Authority is shown below:

Age at 31 August 2021	0	1	2	3	4	5	6	7	8	9	10
<b>North West 1 Total</b>	<b>59</b>	<b>66</b>	<b>88</b>	<b>92</b>	<b>66</b>	<b>71</b>	<b>83</b>	<b>78</b>	<b>92</b>	<b>89</b>	<b>81</b>
Reception Intake Year	2025	2024	2023	2022	-	-	-	-	-	-	-
Year 7 Intake Year	2032	2031	2030	2029	2028	2027	2026	2025	2024	2023	2022



### Forecast methodology for North West 1

The need for primary school places depends on the local child population. Key factors in the forecast are the number of births and children registered with the Health Authority in an area, migration in and around the District and movement of families into new housing developments.

The take up rate of 96% is applied to the health data and the table below shows the calculated number of Reception places required for North West 1 residents in the coming years.

Year of reception intake	2022	2023	2024	2025	2026
Calculated places required	86	83	64	61	51

In addition to these figures, forecasts incorporate trends for children attending schools outside of their local planning area. For North West 1, the highest number of children coming in are from Bingley 2; the highest number attending elsewhere go to schools in Bingley 2 and North West 2. Historically, very few children have attended schools here from outside of the District.

## Forecasts and historic accuracy for North West 1

The tables below contain forecast data submitted to the DfE as part of the annual Schools Capacity (SCAP) return. The grey column shows the comparison (accuracy) of last year's forecast with the (actual) number of pupils on roll at the schools at the January school census.

### Reception:

Year	2021	2022	2023	2024	2025	2026
PAN	105	75	75	75	75	75
<b>Forecast</b>	<b>79</b>	<b>75</b>	<b>75</b>	<b>75</b>	<b>75</b>	<b>66</b>
Surplus	26	0	0	0	0	9
% Surplus	24.8%	0%	0%	0%	0%	12.0%
<b>Actual</b>	<b>78</b>	-	-	-	-	-
Difference	1	-	-	-	-	-
Accuracy	98.7%	-	-	-	-	-

### Reception to Year 6:

Year	2021	2022	2023	2024	2025	2026
Total Capacity	735	735	735	735	735	735
<b>Forecast</b>	<b>603</b>	<b>578</b>	<b>565</b>	<b>533</b>	<b>530</b>	<b>513</b>
Surplus	132	157	170	202	205	222
% Surplus	18.0%	21.4%	23.1%	27.5%	27.9%	30.2%
<b>Actual</b>	<b>595</b>	-	-	-	-	-
Difference	8	-	-	-	-	-
Accuracy	98.7%	-	-	-	-	-

Note that a PAN decrease does not automatically affect the net capacity of the school. Total Capacity, as calculated above, is based on the capacity of the buildings and will only be amended if significant changes are made to the use of space. Capacity here is therefore the maximum number of potential school places; however, the maximum deliverable places in any year will be dependent on factors such as the number of classes schools are staffed to teach.

### Planned / possible action

The Local Authority will monitor the impact of the 2022 PAN reduction at Thornton Primary School, alongside ongoing discussions with schools in the planning area regarding the impact of planned housing developments in this planning area and on-going construction of developments in neighbouring areas.