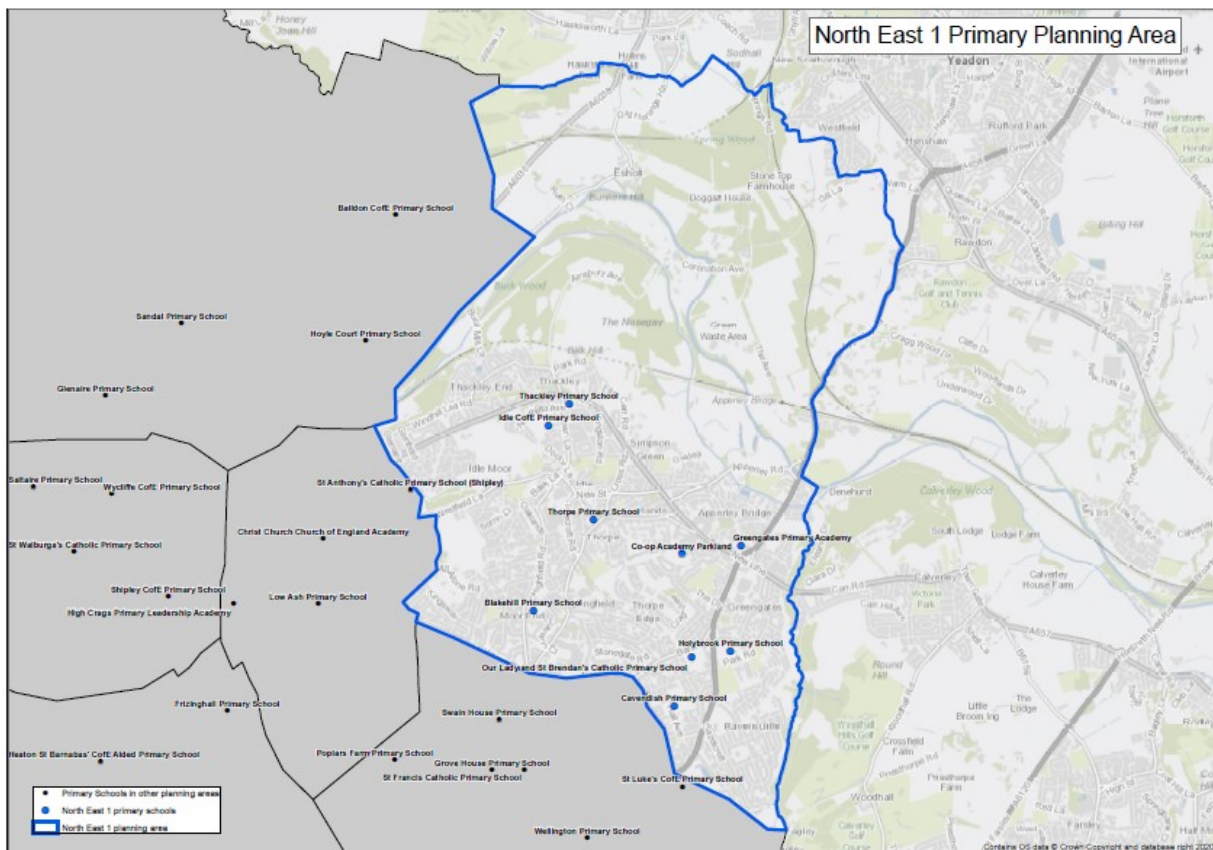


North East 1 Primary School Planning Area

There are nine primary schools in North East 1 planning area, five of which have nursery provision. The area where the primary schools are located is urban but the outline of the planning area also covers some semi-rural parts to the north.

School name	School Type	Multi Academy Trust (MAT)	Published Admission Number (PAN)	Nursery provision
Blakehill Primary School	Community		60	No
Cavendish Primary School	Community		60	Yes
Co-op Academy Parkland	Academy	The Co-operative Academies Trust	30	Yes
Greengates Primary Academy	Academy	Delta Academies Trust	30	Yes
Holybrook Primary School	Academy	Exceed Academies Trust	30	Yes
Idle C of E Primary School	Voluntary Aided		60	No
Our Lady and St Brendan's Catholic Primary School, A Voluntary Academy	Academy	Blessed Christopher Wharton Catholic Academy Trust	30	No
Thackley Primary School	Community		60	Yes
Thorpe Primary	Academy	Carlton Academy Trust	30	No

Map showing primary schools in the North East 1 planning area:



Historic numbers of pupils in North East 1

The table below provides historical information on the total number of reception places available (PAN) and number of reception pupils on roll. The total number of school places available is shown against the total number on roll (NOR) to give an overall number and percentage of surplus places (shown as a minus where there is a shortfall).

Year	PAN	Pupils in reception	Spare reception places	Total Places	Total NOR	Surplus places	% Surplus places
2016	390	392	-2	2935	2632	303	10.32%
2017	420	396	24	2935	2664	271	9.23%
2018	420	376	44	2935	2671	264	8.99%
2019	420	384	36	2935	2652	283	9.64%
2020	420	395	25	2940	2703	237	8.06%
2021	390	387	3	2940	2686	254	8.64%
2022	390	368	22	2659	2940	281	9.56%

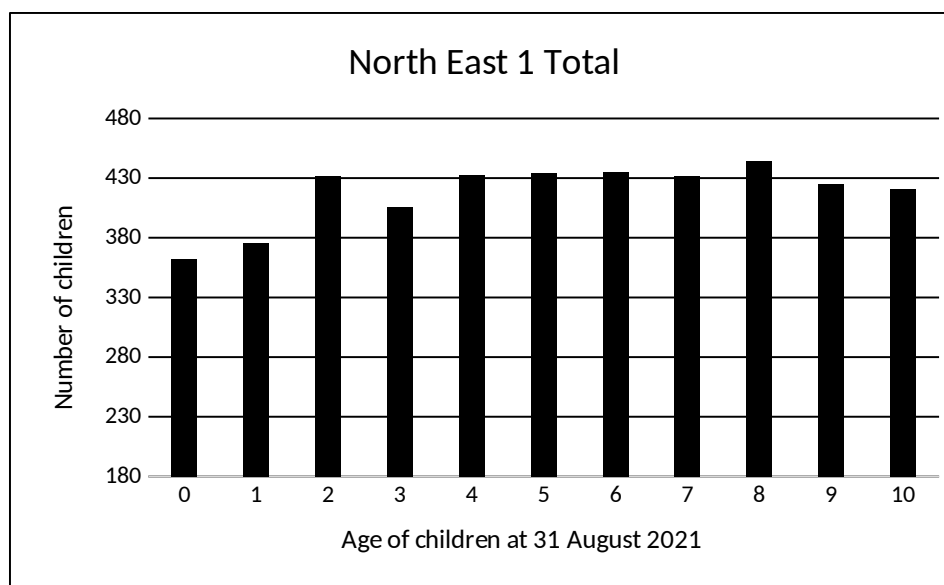
Historic changes and academy conversions

- Parkland Primary School increased its' PAN from 30 to 60 in September 2017.
- Holybrook Primary School converted to academy status in December 2017 under Exceed Academies Trust.
- Parkland Primary School converted to academy status in November 2018 under the Co-op Academies Trust with a name change to Co-op Academy Parkland.
- Greengates Primary School converted to academy status in December 2018 under Delta Academies Trust.
- Our Lady & St Brendan's Catholic Primary converted to academy status in November 2020 under the Blessed Christopher Wharton Catholic Academy Trust.
- Thorpe Primary School converted to academy status in December 2020 under Carlton Academy Trust.
- Co-op Academy Parkland reduced their PAN from 60 to 30 in September 2021.
-

Health Authority Data for North East 1

The number of children recorded in the January 2022 data received from the Health Authority is shown below:

Age at 31 August 2021	0	1	2	3	4	5	6	7	8	9	10
North East 1 Total	362	376	432	406	433	434	435	432	444	425	421
Reception Intake Year	2025	2024	2023	2022	-	-	-	-	-	-	-
Year 7 Intake Year	2032	2031	2030	2029	2028	2027	2026	2025	2024	2023	2022



Forecast methodology for North East 1

The need for primary school places depends on the local child population. Key factors in the forecast are the number of births and children registered with the Health Authority in an area, migration in and around the District and movement of families into new housing developments.

The take up rate of 89% is applied to the health data and the table below shows the calculated number of Reception places required for North East 1 residents in the coming years.

Year of reception intake	2022	2023	2024	2025	2026
Calculated places required	365	387	340	330	322

In addition to these figures, forecasts incorporate trends for children attending schools outside of their local planning area. For North East 1, the highest number of children coming in are from North East 2; the highest number attending elsewhere go to schools in North East 2 as well. Historically, a handful of children have attended schools here from outside of the District.

Forecasts and historic accuracy for North East 1

The tables below contain forecast data submitted to the DfE as part of the annual Schools Capacity (SCAP) return. The grey column shows the comparison (accuracy) of last year's forecast with the (actual) number of pupils on roll at the schools at the January school census.

Reception:

Year	2021	2022	2023	2024	2025	2026
PAN	390	390	390	390	390	390
Forecast	389	366	384	341	333	326
Surplus	1	24	6	49	57	64
% Surplus	0.3%	6.2%	1.5%	12.6%	14.6%	16.4%
Actual	387	-	-	-	-	-
Difference	2	-	-	-	-	-
Accuracy	99.5%	-	-	-	-	-

Reception to Year 6:

Year	2021	2022	2023	2024	2025	2026
Total Capacity	2940	2940	2940	2940	2940	2940
Forecast	2699	2659	2635	2566	2520	2460
Surplus	241	281	305	374	420	480
% Surplus	8.2%	9.6%	10.4%	12.7%	14.3%	16.3%
Actual	2686	-	-	-	-	-
Difference	13	-	-	-	-	-
Accuracy	99.5%	-	-	-	-	-

Note that a PAN decrease does not automatically affect the net capacity of the school. Total Capacity, as calculated above, is based on the capacity of the buildings and will only be amended if significant changes are made to the use of space. Capacity here is therefore the maximum number of potential school places; however, the maximum deliverable places in any year will be dependent on factors such as the number of classes schools are staffed to teach.

Planned / possible action

The Local Authority will continue to monitor the number of children and parental preference in this planning area. Large scale housing developments are at various stages of application or construction in neighbouring planning areas; the additional children from these developments are included in the overall forecast figures, however, it is much more difficult to predict their effect on the popularity of the local schools.

Whilst surplus places are forecast for this planning area, this is largely due to the area being a net exporter of children to other planning areas. The Health data for this area is much more closely aligned with the combined PAN of the schools here. To protect against an increase in local children requesting places in their 'home' planning area, there are currently no plans to address the surplus here for 2024.