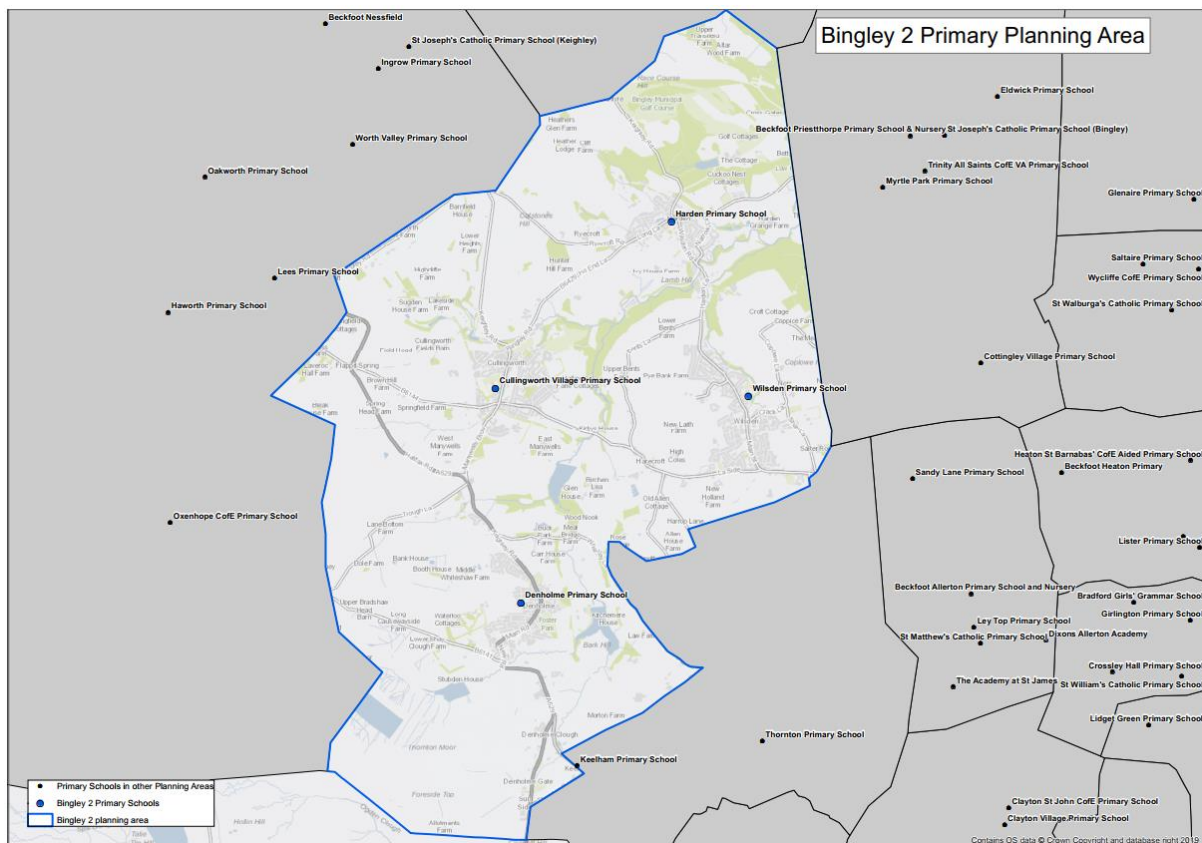


## Bingley 2 Primary School Planning Area

There are four primary schools in Bingley 2 planning area, one of which has nursery provision. The area is rural and is made up of four discrete villages.

School name	School Type	Multi Academy Trust (MAT)	Published Admission Number (PAN)	Nursery provision
Cullingworth Village Primary School	Academy	Bradford Diocesan Academy Trust	45	No
Denholme Primary School	Academy	Nurture Academies Trust	30	Yes
Harden Primary School	Academy	Exceed Academies Trust	30	No
Wilsden Primary School	Academy	Focus Trust	30	No

Map showing primary schools in the Bingley 2 planning area:





## Historic numbers of pupils in Bingley 2

The table below provides historical information on the total number of reception places available (PAN) and number of reception pupils on roll. The total number of school places available is shown against the total number on roll (NOR) to give an overall number and percentage of surplus places (shown as a minus where there is a shortfall).

Year	PAN	Pupils in reception	Spare reception places	Total Places	Total NOR	Surplus places	% Surplus places
2016	165	152	13	1152	1066	86	7.47%
2017	165	148	17	1152	1063	89	7.73%
2018	165	146	19	1155	1066	89	7.71%
2019	165	149	16	1155	1059	96	8.31%
2020	165	148	17	1155	1047	108	9.35%
2021	165	135	30	1155	1021	134	11.60%
2022	135	126	9	982	1155	173	14.98%

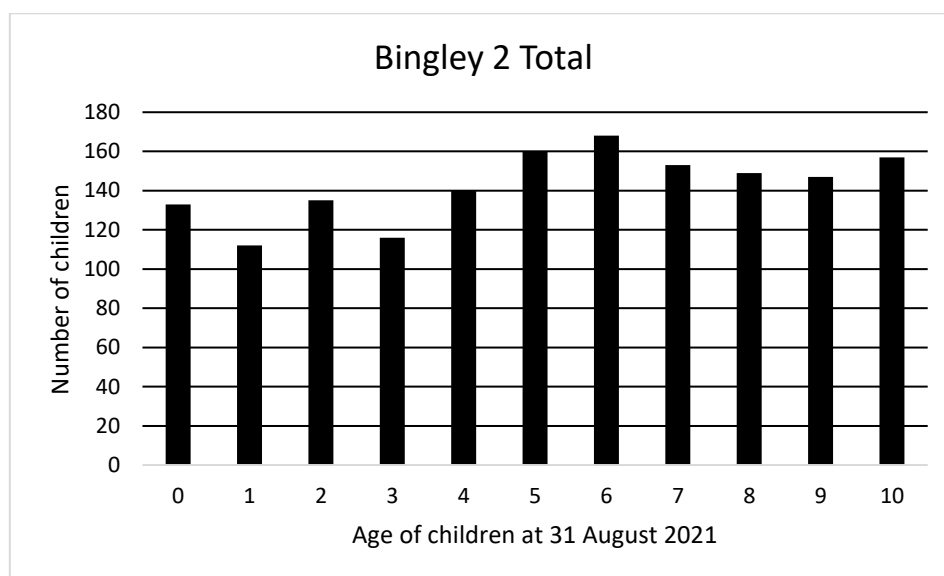
## Historic changes and academy conversions

- Denholme Primary School converted to Academy status in January 2017 under the Bradford Birth to 19 Trust, which has since had a name change to Nurture Academies Trust.
- Wilsden Primary School converted to academy status in February 2017 under the Focus Trust.
- Cullingworth Village Primary School converted to academy status in September 2018 under Bradford Diocesan Academy Trust (BDAT).
- Wilsden Primary School reduced their PAN from 60 to 30 from September 2022.

## Health Authority Data for Bingley 2

The number of children recorded in the January 2022 data received from the Health Authority is shown below:

Age at 31 August 2021	0	1	2	3	4	5	6	7	8	9	10
<b>Bingley 2 Total</b>	<b>133</b>	<b>112</b>	<b>135</b>	<b>116</b>	<b>140</b>	<b>160</b>	<b>168</b>	<b>153</b>	<b>149</b>	<b>147</b>	<b>157</b>
Reception Intake Year	2025	2024	2023	2022	-	-	-	-	-	-	-
Year 7 Intake Year	2032	2031	2030	2029	2028	2027	2026	2025	2024	2023	2022



## Forecast methodology for Bingley 2

The need for primary school places depends on the local child population. Key factors in the forecast are the number of births and children registered with the Health Authority in an area, migration in and around the District and movement of families into new housing developments.

The take up rate of 96% is applied to the health data and the table below shows the calculated number of Reception places required for Bingley 2 residents in the coming years.

Year of reception intake	2022	2023	2024	2025	2026
Calculated places required	116	130	114	123	130

In addition to these figures, forecasts incorporate trends for children attending schools outside of their local planning area. For Bingley 2, the highest number of children coming in are from North West 1; the highest number attending elsewhere go to schools in North West 1 also. Historically, children attending schools here from outside of the District have not been a factor in the forecast for this area.

### Forecasts and historic accuracy

The tables below contain forecast data submitted to the DfE as part of the annual Schools Capacity (SCAP) return. The grey column shows the comparison (accuracy) of last year's forecast with the (actual) number of pupils on roll at the schools at the January school census.

#### Reception:

Year	2021	2022	2023	2024	2025	2026
PAN	165	135	135	135	135	135
<b>Forecast</b>	<b>133</b>	<b>126</b>	<b>135</b>	<b>123</b>	<b>121</b>	<b>126</b>
Surplus	32	9	0	12	14	9
% Surplus	19.4%	6.7%	0%	8.9%	10.4%	6.7%
<b>Actual</b>	<b>135</b>	-	-	-	-	-
Difference	-2	-	-	-	-	-
Accuracy	98.5%	-	-	-	-	-

#### Reception to Year 6:

Year	2021	2022	2023	2024	2025	2026
Total Capacity	1155	1155	1155	1155	1155	1155
<b>Forecast</b>	<b>1012</b>	<b>982</b>	<b>963</b>	<b>934</b>	<b>910</b>	<b>888</b>
Surplus	143	173	192	221	245	267
% Surplus	12.4%	15.0%	16.6%	19.1%	21.2%	23.1%
<b>Actual</b>	<b>1021</b>	-	-	-	-	-
Difference	-9	-	-	-	-	-
Accuracy	99.1%	-	-	-	-	-

Note that a PAN decrease does not automatically affect the net capacity of the school. Total Capacity, as calculated above, is based on the capacity of the buildings and will only be amended if significant changes are made to the use of space. Capacity here is therefore the maximum number of potential school places; however, the maximum deliverable places in any year will be dependent on factors such as the number of classes schools are staffed to teach.

#### Planned / possible action

The Local Authority will continue to monitor the number of children and parental preference in this planning area.

There are sufficient school places within this area, with no current action required to address a surplus or shortfall of places.