

Keighley Secondary School Planning Area

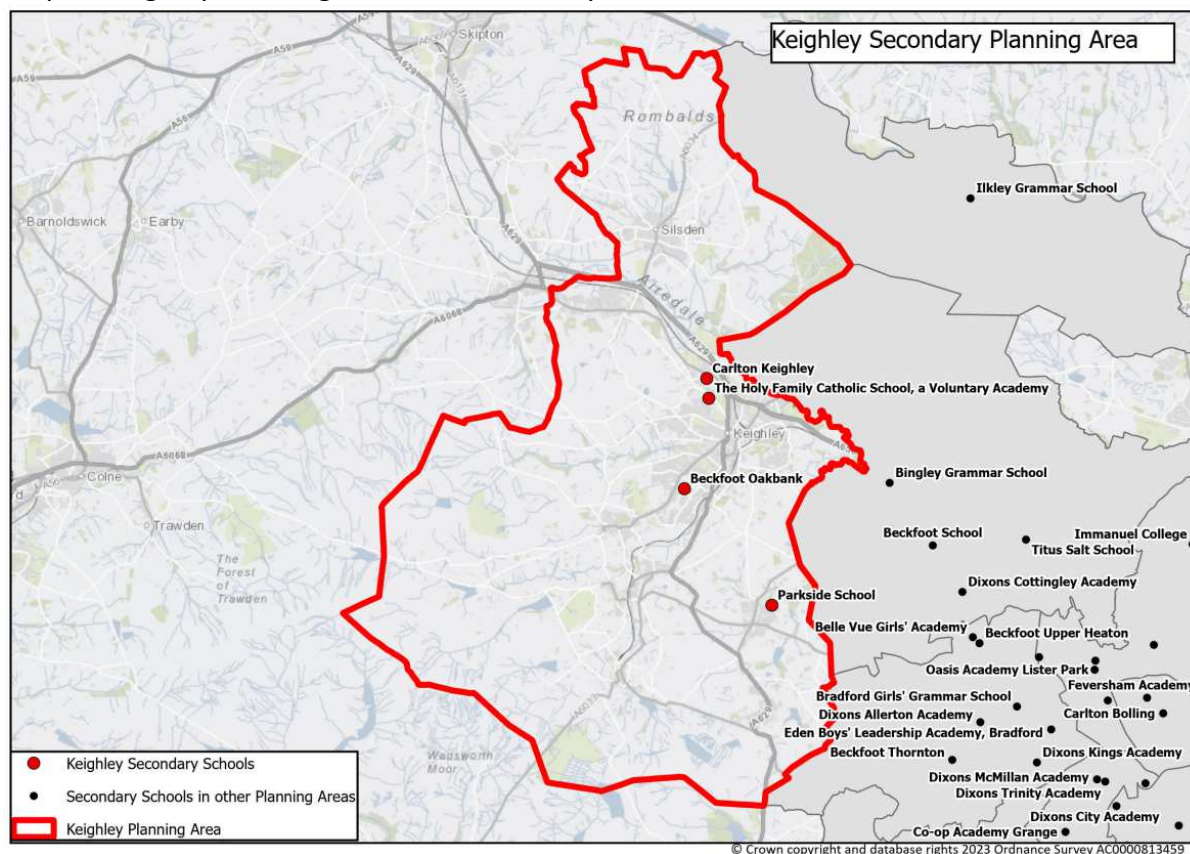
Secondary education in the Keighley Planning Area

There are four secondary schools in the Keighley planning area, three of which have post 16 provision. The area covers a large part of the western side of the District most of which is rural and semirural. It includes the town of Keighley and villages of Cullingworth, Denholme, Eastburn, Haworth, Oakworth, Oldfield, Oxenhope, Silsden, Stanbury and Steeton.

Schools in Keighley Planning Area

School	School Type	Multi Academy Trust (MAT)	Published Admission Number (PAN) 2023	Sixth Form
Beckfoot Oakbank	Academy	Beckfoot Trust	300	Yes
Carlton Keighley	Academy	Carlton Academy Trust	150	No
Parkside School	Academy	Wellspring Academy Trust	210	Yes
The Holy Family Catholic School, a Voluntary Academy	Academy	Blessed Christopher Wharton Catholic Academy Trust	165	Yes

Map of Keighley Planning Area and Secondary Schools:



Historic actions and academy conversions

- Parkside School increased their PAN from 180 to 210 from September 2017 and building work was carried out to increase the capacity of the school building.
- Over and above PAN, Parkside School admitted an extra 6 pupils in 2022 and 12 pupils in 2023 to meet demand in the area.
- Parkside School converted to academy status in September 2023 under the Wellspring Academy Trust.
- University Academy Keighley joined the Carlton Academy Trust in May 2022 with a name change to Carlton Keighley.
- Carlton Keighley (as University Academy Keighley) reduced their PAN from 180 to 150 from September 2022. However, the school admitted an additional 30 children above this number in 2023.

Forecast methodology for Keighley

Given that secondary schools are much larger and more spread out, children of secondary school age often travel further than they did to attend primary school. Forecast methodology is therefore slightly different between the two phases. However, the need for secondary school places still depends on the local child population.

Year 7 forecasts are based on the historic patterns of transfers from Year 6 to Year 7, i.e. the number of children moving up from individual primary schools to specific secondary schools. Other factors include migration in and around the District, and movement of families into new housing developments. These trends are then projected onto the current primary school populations and, where relevant, adjusted to include trends for children attending schools in other Local Authorities or other Local Authority children attending Bradford schools.

Children transfer here from primary schools in a few different primary planning areas. The main suppliers are Keighley 1 and Keighley 2.

Historically, very few children have attended schools here from outside of the District. The number of children living here but attending schools in other Local Authorities has been significantly higher, i.e. the planning area is a net exporter to other Local Authorities. This planning area is by far the highest exporter of children to schools outside the District, with over 200 children going to schools in other local authorities each year. South Craven School, in North Yorkshire LA, is the closest secondary school for much of the north western corner of this planning area and accounts for 60-70% of this figure each year.

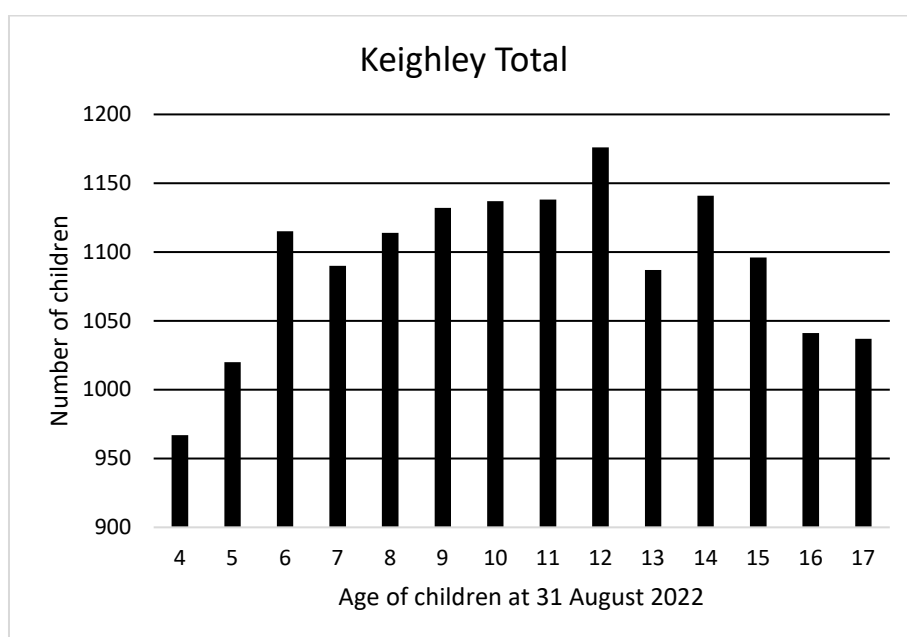
Health Authority Data for Keighley

Whilst the number of children living in a secondary planning area is not the primary factor for Year 7 forecasting, data is included here for context. The size of cohorts entering secondary schools has been increasing for a number of years due to larger populations of specific age groups. Across the district the forecast shows that numbers entering the secondary phase will begin to decrease from 2022. Other than a slight rise in the numbers of children due to start secondary school from 2026 to 2027, this planning area follows the District-wide trend.

The following tables and chart show the number of children, broken down by their age at 31st August 2022, and are based on January 2023 data received from the Health Authority:

Age at 31 August 2022	4	5	6	7	8	9	10
Keighley Total	967	1020	1115	1090	1114	1132	1137
Year 7 Intake Year	2029	2028	2027	2026	2025	2024	2023

Age at 31 August 2022	11	12	13	14	15	16	17
Keighley Total	1138	1176	1087	1141	1096	1041	1037
2022/23 School Year	7	8	9	10	11	12	13



Forecast & Accuracy

The tables below contain forecast data submitted to the DfE as part of the annual School Capacity (SCAP) return. The grey column shows the difference between last year's forecast and the actual number of pupils on roll at the schools at the January school census.

Year 7

Year	2022	2023	2024	2025	2026	2027	2028	2029
PAN	825	825	810	810	810	810	810	810
Forecast	802	793	811	794	782	785	763	704
Surplus	23	32	-1	16	28	25	47	106
% Surplus	2.8%	3.9%	-0.1%	2.0%	3.5%	3.1%	5.8%	13.1%
Actual	783	-	-	-	-	-	-	-
Difference	19	-	-	-	-	-	-	-
% Difference	2.4%	-	-	-	-	-	-	-

Whole school (Years 7 to 13)

Year	2022	2023	2024	2025	2026	2027	2028	2029
Total Capacity	4937	4937	4937	4937	4937	4937	4937	4937
Forecast	4352	4316	4366	4396	4375	4377	4317	4216
Surplus	585	621	571	541	562	560	620	721
% Surplus	11.8%	12.6%	11.6%	11.0%	11.4%	11.3%	12.6%	14.6%
Actual	4303	-	-	-	-	-	-	-
Difference	49	-	-	-	-	-	-	-
% Difference	1.1%	-	-	-	-	-	-	-

Planned/possible actions

The Local Authority will continue to monitor the number of children and parental preference in this planning area.

Across the District, the number of children due to transfer to secondary in future years is falling. However, this trend does not follow a uniform pattern across all planning areas. Should there be a significant increase in the number of children in this planning, the Local Authority will liaise with relevant schools and investigate options for potential bulge classes where appropriate.