

# Ilkley Secondary School Planning Area

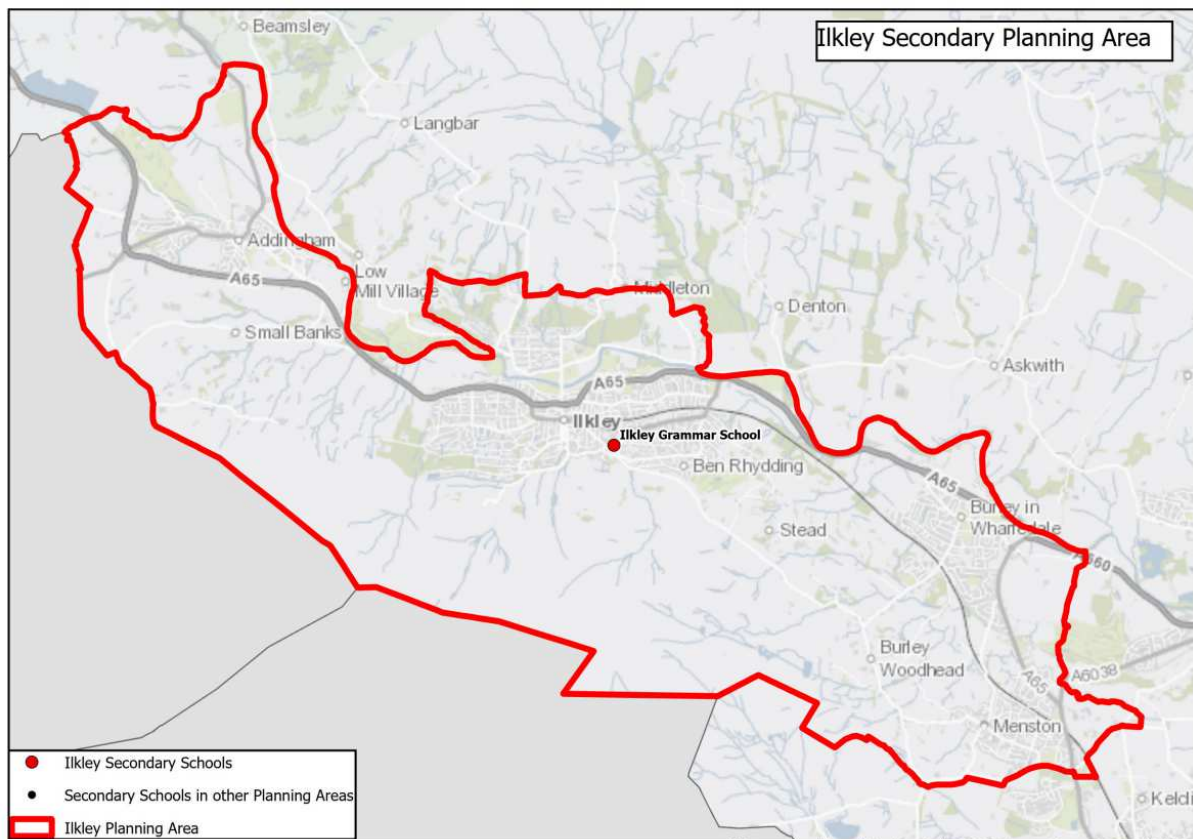
## Secondary education in the Ilkley Planning Area

There is one secondary school in the Ilkley planning area and it has post 16 provision. The area is in the north of the District covering rural and semi-rural areas, including Ilkley and the villages of Addingham, Burley in Wharfedale and Menston. It borders Leeds to the east and North Yorkshire to the north.

## Schools in Ilkley Planning Area

School	School Type	Multi Academy Trust (MAT)	Published Admission Number (PAN) 2023	Sixth Form
Ilkley Grammar School	Academy	Moorlands Learning Trust	300	Yes

## Map of Ilkley Planning Area and Secondary School:



## **Historic actions and academy conversions**

- Ilkley Grammar School increased their PAN from 245 to 261 from September 2016.
- Ilkley Grammar School increased their PAN from 261 to 286 from September 2017.
- Ilkley Grammar School increased their PAN from 286 to 300 from September 2018.
- Building work to expand the school was completed in September 2019.
- Ilkley Grammar School has admitted 15-25 additional pupils into Year 7 from 2019-23 to meet demand.
- Ilkley Grammar School expanded its priority admission area for 2022 to include parts of Menston that fall under Leeds Local Authority

## **Forecast methodology for Ilkley**

Year 7 forecasts are based on the historic patterns of transfers from Year 6 to Year 7, i.e. the number of children moving up from individual primary schools to specific secondary schools. Other factors include migration in and around the District, and movement of families into new housing developments. These trends are then projected onto the current primary school populations and, where relevant, adjusted to include trends for children attending schools in other Local Authorities or other Local Authority children attending Bradford schools.

Almost exclusively, children transfer here from primary schools in the Wharfe Valley primary planning area. This is understandable, given the overlap of the two areas.

Historically, slightly more than a dozen children have attended school here from outside of the District each year. This number rose slightly in 2022, after the school expanded its priority admission area, but fell in 2023. The number of children living here but attending schools in other Local Authorities has been much higher, i.e. the planning area is a net exporter to other Local Authorities.

### Health Authority Data for Ilkley

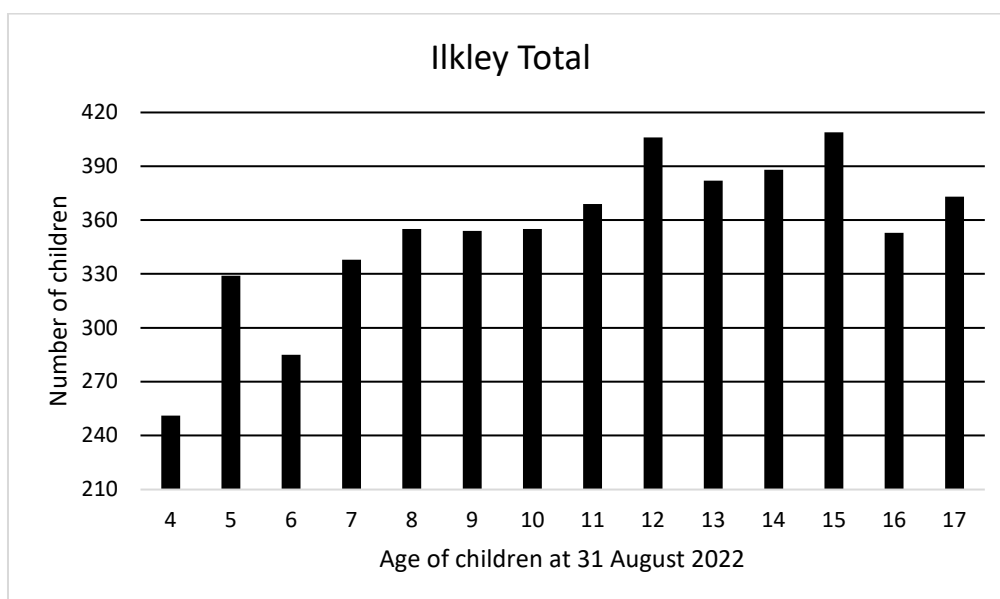
Whilst the number of children living in a secondary planning area is not the primary factor for Year 7 forecasting, it has added relevance here because the planning area contains a single school.

The size of cohorts entering secondary schools has been increasing for a number of years due to larger populations of specific age groups. Across the district the forecast shows that numbers entering the secondary phase will begin to decrease from 2022; figures for this planning area largely follow that trend.

The following tables and chart show the number of children, broken down by their age at 31<sup>st</sup> August 2022, and are based on January 2023 data received from the Health Authority:

Age at 31 August 2022	4	5	6	7	8	9	10
<b>Ilkley Total</b>	<b>251</b>	<b>329</b>	<b>285</b>	<b>338</b>	<b>355</b>	<b>354</b>	<b>355</b>
Year 7 Intake Year	2029	2028	2027	2026	2025	2024	2023

Age at 31 August 2022	11	12	13	14	15	16	17
<b>Ilkley Total</b>	<b>369</b>	<b>406</b>	<b>382</b>	<b>388</b>	<b>409</b>	<b>353</b>	<b>373</b>
2022/23 School Year	7	8	9	10	11	12	13



## Forecast & Accuracy

The tables below contain forecast data submitted to the DfE as part of the annual School Capacity (SCAP) return. The grey column shows the difference between last year's forecast and the actual number of pupils on roll at the schools at the January school census.

### Year 7

Year	2022	2023	2024	2025	2026	2027	2028	2029
PAN	300	300	300	300	300	300	300	300
<b>Forecast</b>	<b>319</b>	<b>322</b>	<b>319</b>	<b>318</b>	<b>318</b>	<b>292</b>	<b>300</b>	<b>277</b>
Surplus	-19	-22	-19	-18	-18	8	0	23
% Surplus	-6.3%	-7.3%	-6.3%	-6.0%	-6.0%	2.7%	0.0%	7.7%
<b>Actual</b>	<b>317</b>	-	-	-	-	-	-	-
Difference	2	-	-	-	-	-	-	-
% Difference	0.6%	-	-	-	-	-	-	-

### Whole school (Years 7 to 13)

Year	2022	2023	2024	2025	2026	2027	2028	2029
Total Capacity	1960	1960	1960	1960	1960	1960	1960	1960
<b>Forecast</b>	<b>2036</b>	<b>2142</b>	<b>2186</b>	<b>2211</b>	<b>2213</b>	<b>2196</b>	<b>2202</b>	<b>2158</b>
Surplus	-76	-182	-226	-251	-253	-236	-242	-198
% Surplus	-3.9%	-9.3%	-11.5%	-12.8%	-12.9%	-12.0%	-12.3%	-10.1%
<b>Actual</b>	<b>2083</b>	-	-	-	-	-	-	-
Difference	-47	-	-	-	-	-	-	-
% Difference	-2.3%	-	-	-	-	-	-	-

## Planned/possible actions

The Local Authority will continue to monitor the number of children and parental preference in this planning area, especially with regards to any emerging trends from the expansion of Ilkley Grammar School's priority admission area and the 475 home housing development that is under construction.

Ilkley Grammar School was successful in its application to be included in the third set of schools in the DfE's Schools Rebuilding Programme. Planning applications to ratify specific proposals are anticipated in 2023/24.