

Bradford North East Secondary School Planning Area

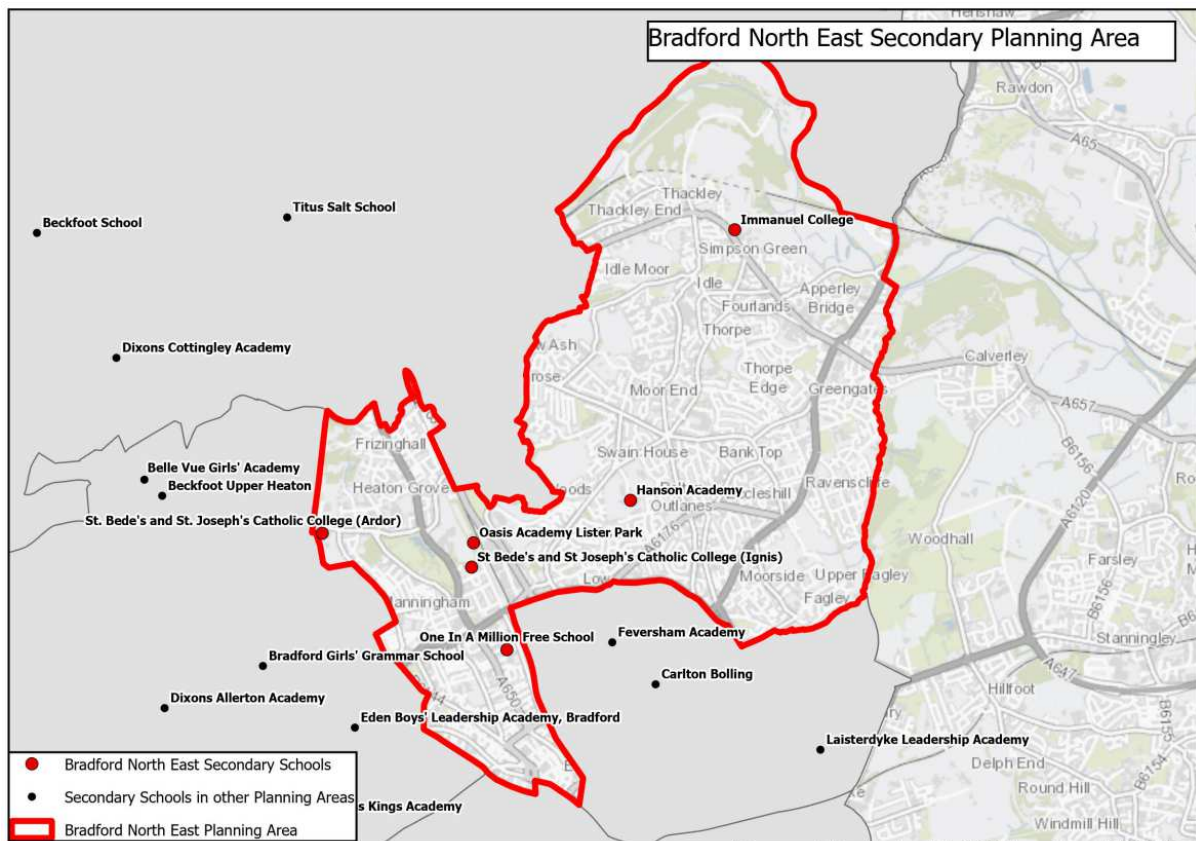
Secondary education in the Bradford North East Planning Area

There are five secondary schools in the Bradford North East planning area, four of which have post 16 provision. The area is predominantly urban but becomes increasingly rural at its northern end. It covers Manningham and Frizinghall to the north of Bradford city centre and extends north east to include Eccleshill, Fagley, Ravenscliffe and Greengates, as well as the villages of Idle and Thackley. The area borders Leeds Local Authority to the east.

Schools in Bradford North East Planning Area

School	School Type	Multi Academy Trust (MAT)	Published Admission Number (PAN) 2023	Sixth Form
Hanson Academy	Academy	Delta Academies Trust	300	Yes
Immanuel College	Academy	Bradford Diocesan Academies Trust	300	Yes
Oasis Academy Lister Park	Academy	Oasis Community Learning	160	Yes
One In A Million Free School	Free school	One In A Million Free School (single-academy trust)	75	No
St Bede's and St Joseph's Catholic College	Voluntary Aided	Blessed Christopher Wharton Catholic Academy Trust	290	Yes

Map of Bradford North East Planning Area and Secondary Schools:



Historic actions and academy conversions

- Over and above PAN, Oasis Academy Lister Park admitted an additional 15 pupils in September 2019-21, an additional 5 pupils in 2022 and an additional 20 pupils in 2023 to meet demand in the area.
- Immanuel College converted to academy status in February 2016 under Bradford Diocesan Academy Trust (BDAT).
- One In A Million Free School increased their PAN from 60 to 75 in September 2017.
- Immanuel College increased their PAN from 240 to 300 in September 2019.
- Hanson School converted to academy status and became Hanson Academy in July 2022 under Delta Academies Trust.
- St Bede's & St Joseph's Catholic College converted to academy status and joined the Blessed Christopher Wharton Catholic Academy Trust in September 2023.

Forecast methodology for Bradford North East

Given that secondary schools are much larger and more spread out, children of secondary school age often travel further than they did to attend primary school. Forecast methodology is therefore slightly different between the two phases. However, the need for secondary school places still depends on the local child population.

Year 7 forecasts are based on the historic patterns of transfers from Year 6 to Year 7, i.e. the number of children moving up from individual primary schools to specific secondary schools. Other factors include migration in and around the District, and movement of families into new housing developments. These trends are then projected onto the current primary school populations and, where relevant, adjusted to include trends for children attending schools in other Local Authorities or other Local Authority children attending Bradford schools.

Children transfer here from primary schools in a number of different primary planning areas. The main suppliers are North East 1 and North East 2 but significant numbers also come from schools in North West 4 and North West 5.

Historically, very few children have attended schools here from outside of the District. The number of children living here but attending schools in other Local Authorities has been significantly higher, i.e. the planning area is a net exporter to other Local Authorities. Just over 150 children resident in the planning area held allocations to schools in other Local Authorities in September 2023.

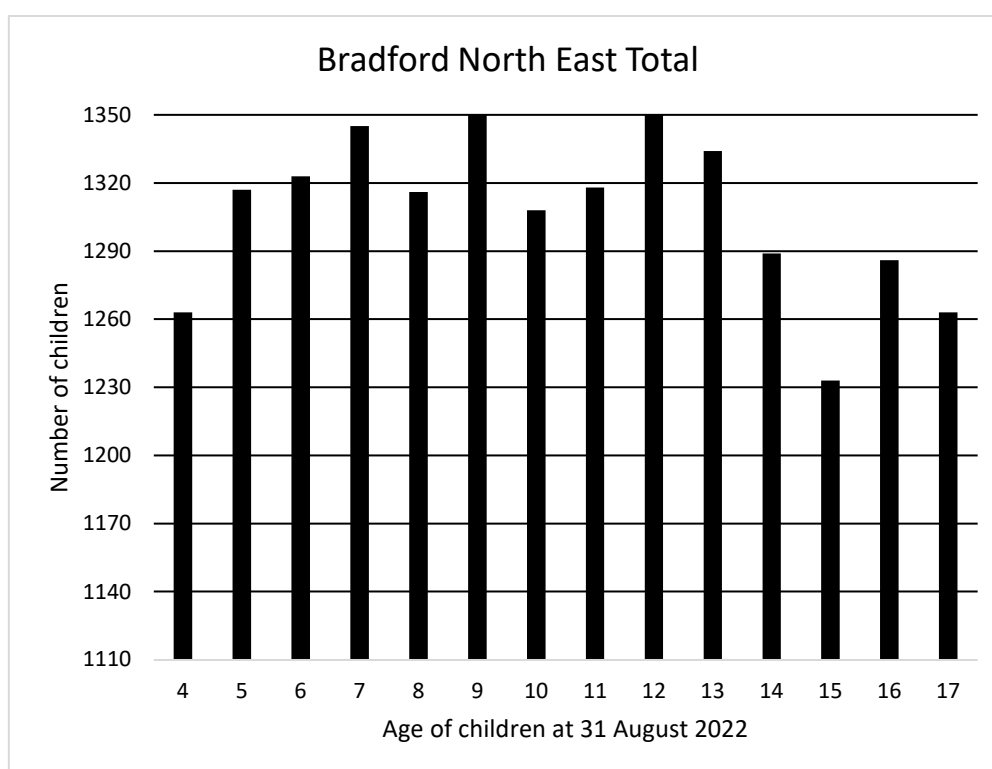
Health Authority Data for Bradford North East

Whilst the number of children living in a secondary planning area is not the primary factor for Year 7 forecasting, data is included here for context. The size of cohorts entering secondary schools has been increasing for a number of years due to larger populations of specific age groups. Across the district the forecast shows that numbers entering the secondary phase will begin to decrease from 2022. However, population figures for this planning area identify additional peaks in 2024 and 2026, without any significant decline until 2029.

The following tables and chart show the number of children, broken down by their age at 31st August 2022, and are based on January 2023 data received from the Health Authority:

Age at 31 August 2022	4	5	6	7	8	9	10
Bradford North East Total	1263	1317	1323	1345	1316	1351	1308
Year 7 Intake Year	2029	2028	2027	2026	2025	2024	2023

Age at 31 August 2022	11	12	13	14	15	16	17
Bradford North East Total	1318	1355	1334	1289	1233	1286	1263
2022/23 School Year	7	8	9	10	11	12	13



Forecast & Accuracy

The tables below contain forecast data submitted to the DfE as part of the annual School Capacity (SCAP) return. The grey column shows the difference between last year's forecast and the actual number of pupils on roll at the schools at the January school census.

Year 7

Year	2022	2023	2024	2025	2026	2027	2028	2029
PAN	1125	1125	1125	1125	1125	1125	1125	1125
Forecast	1128	1130	1125	1128	1125	1143	1125	1088
Surplus	-3	-5	0	-3	0	-18	0	37
% Surplus	-0.3%	-0.4%	0.0%	-0.3%	0.0%	-1.6%	0.0%	3.3%
Actual	1087	-	-	-	-	-	-	-
Difference	41	-	-	-	-	-	-	-
% Difference	3.8%	-	-	-	-	-	-	-

Whole school (Years 7 to 13)

Year	2022	2023	2024	2025	2026	2027	2028	2029
Total Capacity	6878	6878	6878	6878	6878	6878	6878	6878
Forecast	6563	6421	6473	6507	6526	6584	6574	6541
Surplus	315	457	405	371	352	294	304	337
% Surplus	4.6%	6.6%	5.9%	5.4%	5.1%	4.3%	4.4%	4.9%
Actual	6401	-	-	-	-	-	-	-
Difference	162	-	-	-	-	-	-	-
% Difference	2.5%	-	-	-	-	-	-	-

Planned/possible actions

The Local Authority will continue to monitor the number of children and parental preference in this planning area.

Across the District, the number of children due to transfer to secondary in future years is falling. However, this trend does not follow a uniform pattern across all planning areas. The Local Authority will therefore continue to liaise with relevant schools and investigate options for potential bulge classes where appropriate.