

# Aire Valley Secondary School Planning Area

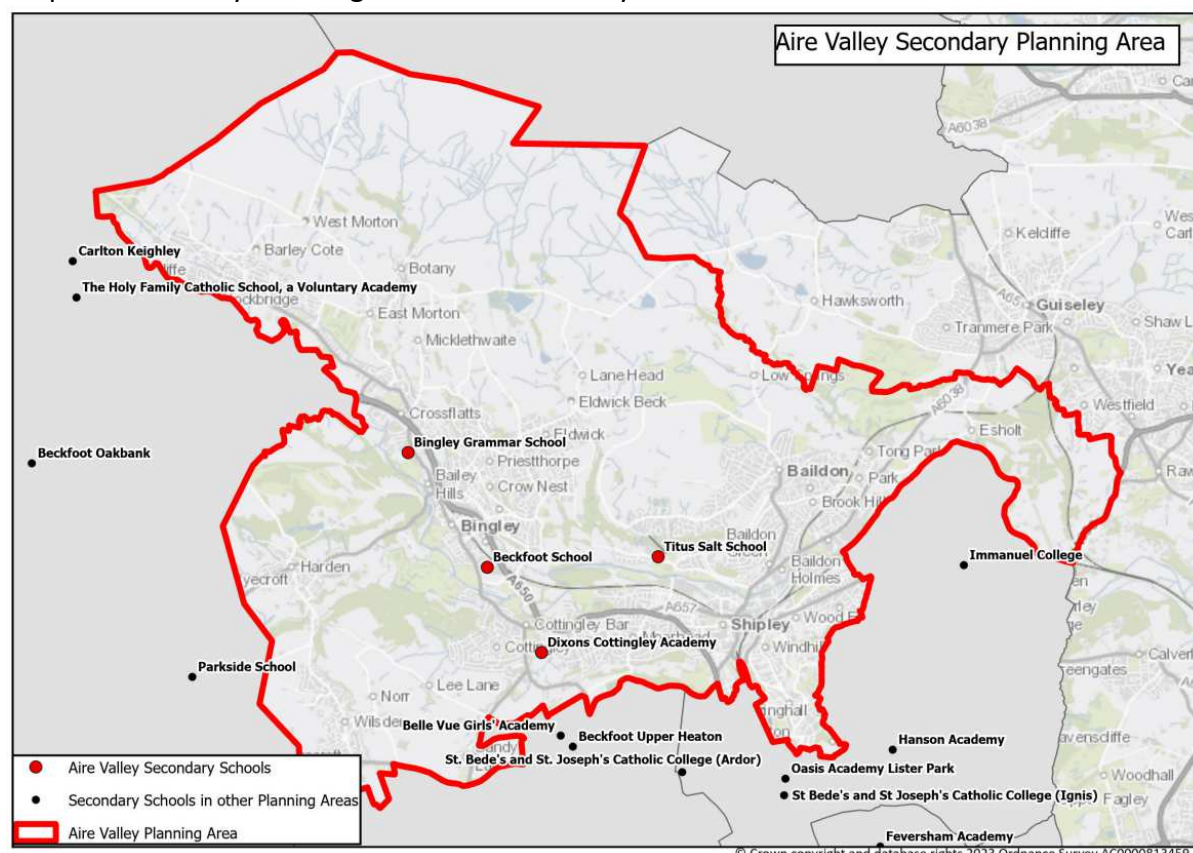
## Secondary education in the Aire Valley Planning Area

There are four secondary schools in the Aire Valley planning area, three of which have post 16 provision. The area covers areas of rural and semi-rural countryside including parts of the town of Bingley and the villages of Crossflatts, Eldwick, Gilstead and Micklethwaite.

Schools in Aire Valley Planning Area:

Secondary School	School Type	Multi Academy Trust (MAT)	Published Admission Number (PAN) Year 7 2023	Sixth form provision
Beckfoot School	Academy	Beckfoot Trust	270	Yes
Bingley Grammar School	Voluntary Aided	-	300	Yes
Dixons Cottingley Academy	Academy	Dixons Academies Trust	180	No
Titus Salt School	Community	-	250	Yes

Map of Aire Valley Planning Area and Secondary Schools:



## **Historic actions and academy conversions**

- The Samuel Lister Academy joined the Dixons Academy Trust in September 2018 with a name change to Dixons Cottingley Academy.
- Titus Salt School increased their PAN from 240 to 250 from September 2020.
- Following consultation, Dixons Cottingley Academy closed their sixth form in July 2019. Following this their Funding agreement was amended to remove that space from the available capacity.
- Following consultation, Dixons Cottingley Academy has amended its admission policy for 2023 onwards to include priority for children attending certain Dixons primary schools.
- Over and above PAN, Bingley Grammar School admitted up to an additional 30 pupils in September 2019, 2021, 2022 and 2023 to meet the demand in the area.

## **Forecast methodology for Aire Valley**

Given that secondary schools are much larger and more spread out, children of secondary school age often travel further than they did to attend primary school. Forecast methodology is therefore slightly different between the two phases. However, the need for secondary school places still depends on the local child population.

Year 7 forecasts are based on the historic patterns of transfers from Year 6 to Year 7, i.e. the number of children moving up from individual primary schools to specific secondary schools. Other factors include migration in and around the District, and movement of families into new housing developments. These trends are then projected onto the current primary school populations and, where relevant, adjusted to include trends for children attending schools in other Local Authorities or other Local Authority children attending Bradford schools.

Children transfer here from primary schools in a number of different primary planning areas. The highest number of children come from schools in Bingley 1 but the other main suppliers are Shipley 2, Shipley 3 and North West 5.

Historically, only a handful of children have attended schools here from outside of the District. The number of children living here but attending schools in other Local Authorities has been much higher, i.e. the planning area is a net exporter to other Local Authorities. Just over a hundred children resident in the planning area held allocations to schools in other Local Authorities in September 2023.

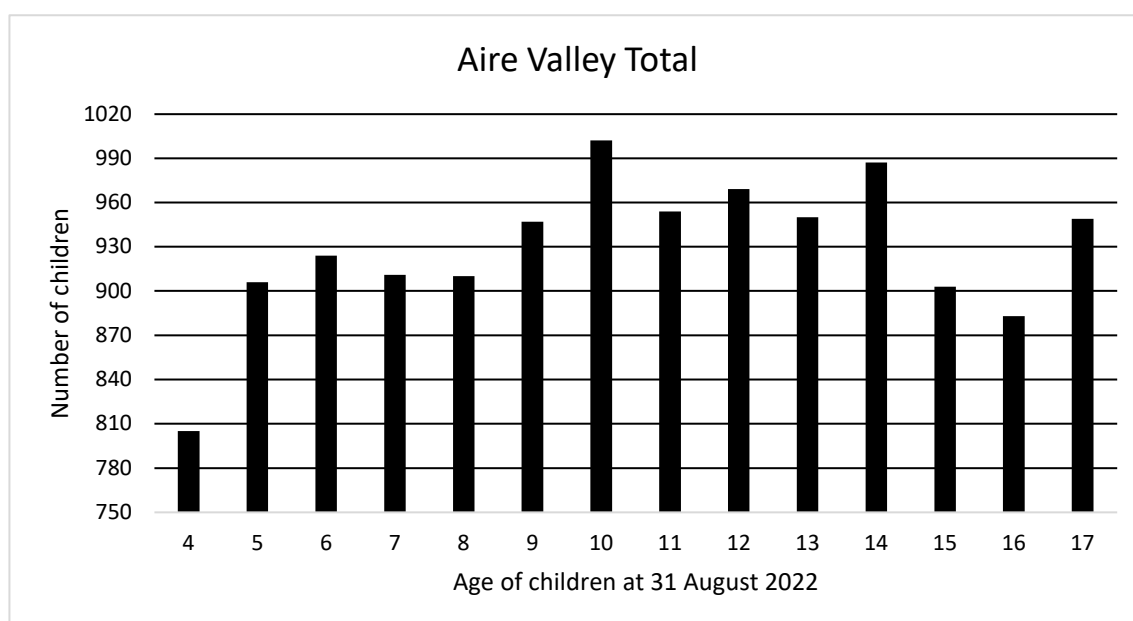
## Health Authority Data for Aire Valley

Whilst the number of children living in a secondary planning area is not the primary factor for Year 7 forecasting, data is included here for context. The size of cohorts entering secondary schools has been increasing for a number of years due to larger populations of specific age groups. Across the district, the previous forecasts have shown that numbers entering the secondary phase were due to begin to decrease from 2022. However, population figures for this planning area identify a peak in 2023 that is higher than the cohorts currently in secondary school. The population decline from 2024 follows the District trend, albeit with slight rebound in 2027.

The following tables and chart show the number of children, broken down by their age at 31<sup>st</sup> August 2022, and are based on January 2023 data received from the Health Authority:

Age at 31 August 2022	4	5	6	7	8	9	10
<b>Aire Valley Total</b>	<b>805</b>	<b>906</b>	<b>924</b>	<b>911</b>	<b>910</b>	<b>947</b>	<b>1002</b>
Year 7 Intake Year	2029	2028	2027	2026	2025	2024	2023

Age at 31 August 2022	11	12	13	14	15	16	17
<b>Aire Valley Total</b>	<b>954</b>	<b>969</b>	<b>950</b>	<b>987</b>	<b>903</b>	<b>883</b>	<b>949</b>
2022/23 School Year	7	8	9	10	11	12	13



## Forecast & Accuracy

The tables below contain forecast data submitted to the DfE as part of the annual School Capacity (SCAP) return. The grey column shows the difference between last year's forecast and the actual number of pupils on roll at the schools at the January school census.

### Year 7

Year	2022	2023	2024	2025	2026	2027	2028	2029
PAN	1000	1000	1000	1000	1000	1000	1000	1000
<b>Forecast</b>	<b>1026</b>	<b>1043</b>	<b>1030</b>	<b>1025</b>	<b>995</b>	<b>1000</b>	<b>999</b>	<b>942</b>
Surplus	-26	-43	-30	-25	5	0	1	58
% Surplus	-2.6%	-4.3%	-3.0%	-2.5%	0.5%	0.0%	0.1%	5.8%
<b>Actual</b>	<b>1021</b>	-	-	-	-	-	-	-
Difference	5	-	-	-	-	-	-	-
% Difference	0.5%	-	-	-	-	-	-	-

### Whole school (Years 7 to 13)

Year	2022	2023	2024	2025	2026	2027	2028	2029
Total Capacity	5836	5836	5836	5836	5836	5836	5836	5836
<b>Forecast</b>	<b>5909</b>	<b>5926</b>	<b>5966</b>	<b>5985</b>	<b>5957</b>	<b>5959</b>	<b>5922</b>	<b>5830</b>
Surplus	-73	-90	-130	-149	-121	-123	-86	6
% Surplus	-1.3%	-1.5%	-2.2%	-2.6%	-2.1%	-2.1%	-1.5%	0.1%
<b>Actual</b>	<b>5881</b>	-	-	-	-	-	-	-
Difference	28	-	-	-	-	-	-	-
% Difference	0.5%	-	-	-	-	-	-	-

### Planned/possible actions

Construction is underway to expand the capacity by 150 places at Bingley Grammar School. This will help to address the shortfall in this planning area. The school has taken additional children (over and above their PAN) into Year 7 for a number of years but requires this additional space in order to continue to do so.

The Local Authority will continue to monitor the number of children and parental preference in this planning area.

Across the District, the number of children due to transfer to secondary in future years is falling. However, this trend does not follow a uniform pattern across all planning areas. The Local Authority will therefore continue to liaise with relevant schools and investigate options for potential bulge classes where appropriate.