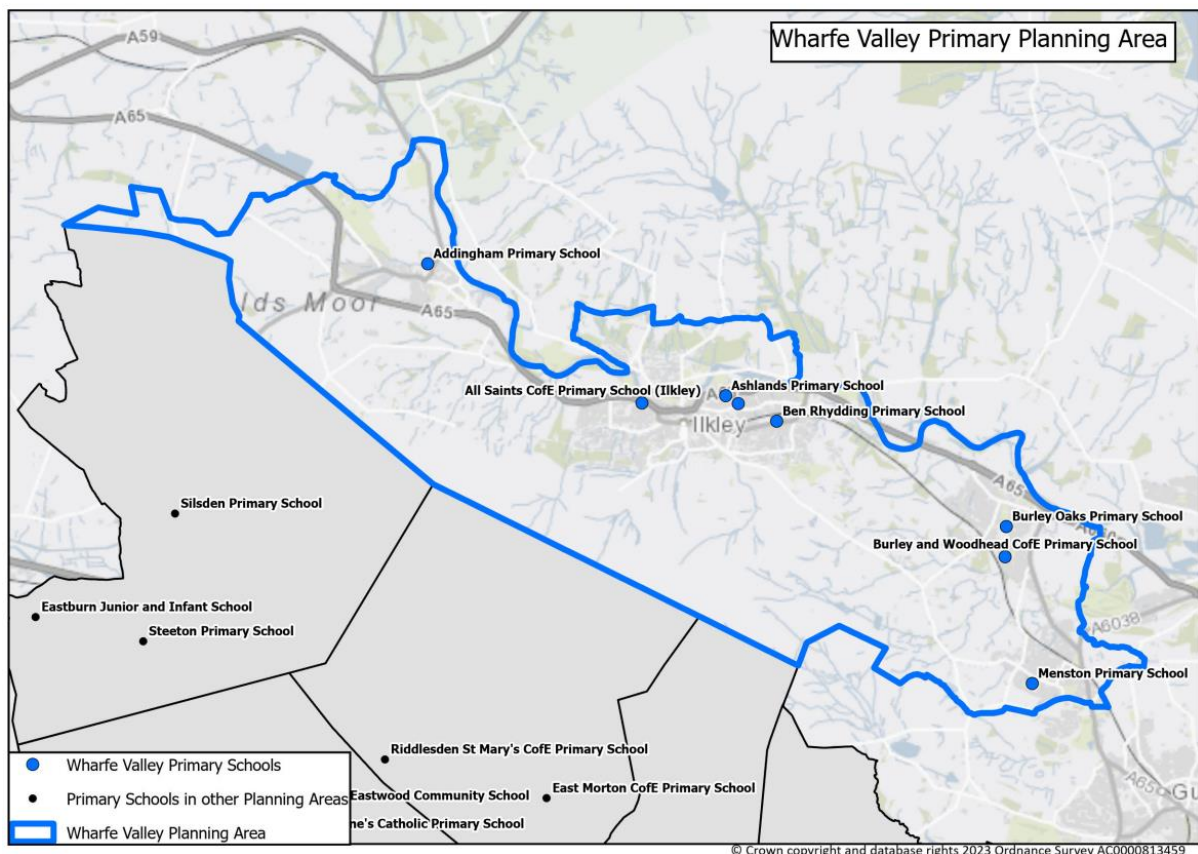


Wharfe Valley Primary School Planning Area

There are eight primary schools in Wharfe Valley, one of which has nursery provision. The area is semi-rural covering Addingham, Ilkley, Burley and Menston.

School name	School Type	Multi Academy Trust (MAT)	Published Admission Number (PAN) 2023	Nursery provision
Addingham Primary School	Community		30	No
All Saints' C of E Primary School	Voluntary Controlled		60	No
Ashlands Primary School	Academy	Moorlands Learning Trust	60	Yes
Ben Rhydding Primary School	Community		30	No
Burley and Woodhead C of E Primary School	Voluntary Controlled		30	No
Burley Oaks Primary School	Academy	Moorlands Learning Trust	60	No
Menston Primary School	Academy	Moorlands Learning Trust	60	No
The Sacred Heart Catholic Primary School	Academy	The Bishop Wheeler Catholic Academy Trust	30	No

Map showing primary schools in the Wharfe Valley planning area:



Historic numbers of pupils in Wharfe Valley

The table below provides historical information on the total number of reception places available (PAN) and number of reception pupils on roll. The total number of school places available is shown against the total number on roll (NOR) to give an overall number and percentage of surplus places (shown as a minus where there is a shortfall).

Year	PAN	Pupils in reception	Spare reception places	Total Places	Total NOR	Surplus places	% Surplus places
2017	360	316	44	2444	2445	-1	-0.04%
2018	360	333	27	2414	2409	5	0.21%
2019	360	328	32	2459	2395	64	2.60%
2020	360	281	79	2459	2295	164	6.67%
2021	360	320	40	2519	2260	259	10.28%
2022	360	254	106	2519	2198	321	12.74%
2023*	360	270	90	2519	2142	377	14.97%

*Based on Primary school forecast, July 2023

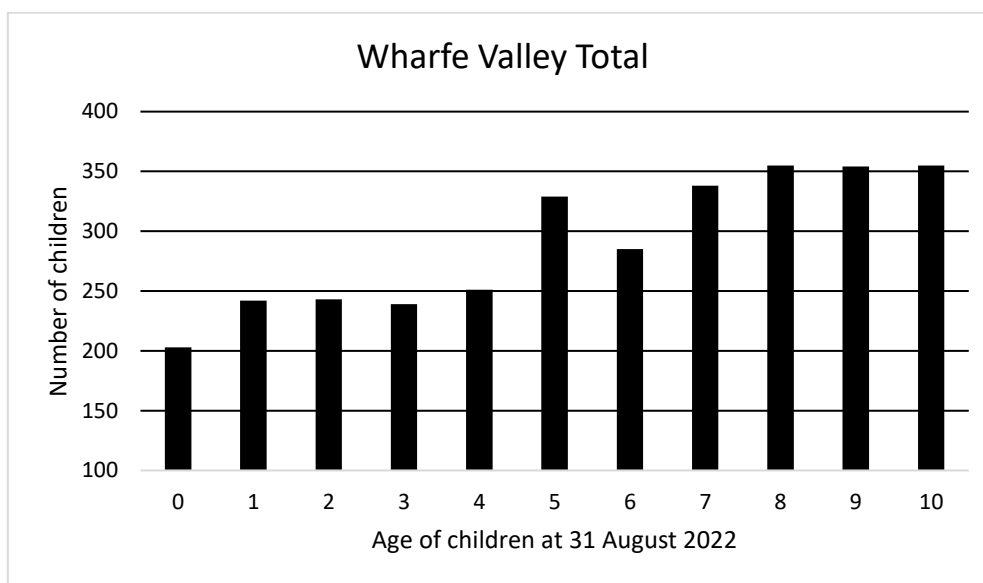
Historic actions and academy conversions

- Addingham Primary School admitted a half bulge class in September 2017 to meet the demand for places in the area.
- All Saints' C of E Primary School increased their PAN from 45 to 60 in 2018.
- Ashlands Primary School, Burley Oaks Primary School and Menston Primary School converted to academy status in September 2023 under the Moorlands Learning Trust.

Health Authority Data for Wharfe Valley

The number of children recorded in the January 2023 data received from the Health Authority is shown below:

Age at 31 August 2022	0	1	2	3	4	5	6	7	8	9	10
Wharfe Valley Total	203	242	243	239	251	329	285	338	355	354	355
Reception Intake Year	2026	2025	2024	2023	-	-	-	-	-	-	-
Year 7 Intake Year	2033	2032	2031	2030	2029	2028	2027	2026	2025	2024	2023



Forecast methodology for Wharfe Valley

The need for primary school places depends on the local child population. Key factors in the forecast are the number of births and children registered with the Health Authority in an area, migration in and around the District and movement of families into new housing developments.

The take up rate of 93% is applied to the health data and the table below shows the calculated number of Reception places required for Wharfe Valley residents in the coming years.

Year of reception intake	2023	2024	2025	2026	2027
Calculated places required	239	251	271	233	223

In addition to these figures, forecasts incorporate trends for children attending schools outside of their local planning area. For Wharfe Valley, the highest number of children coming in have been from Leeds Local Authority; historically, around two dozen children have attended schools here from outside of the District, whilst only around half a dozen go to schools in a neighbouring Local Authority. Children living here have rarely attended state schools in other Bradford planning areas.

Forecasts and historic accuracy for Wharfe Valley

The tables below contain forecast data submitted to the DfE as part of the annual School Capacity (SCAP) return. The grey column shows the difference between last year's forecast and the actual number of pupils on roll at the schools at the January school census.

Reception:

Year	2022	2023	2024	2025	2026	2027
PAN	360	360	360	360	360	360
Forecast	258	270	287	307	272	259
Surplus	102	90	73	53	88	101
% Surplus	39.5%	33.3%	25.4%	17.3%	32.4%	39.0%
Actual	254	-	-	-	-	-
Difference	-4	-	-	-	-	-
% Difference	-1.6%	-	-	-	-	-

Reception to Year 6:

Year	2022	2023	2024	2025	2026	2027
Total Capacity	2519	2519	2519	2519	2519	2519
Forecast	2183	2142	2116	2090	2046	2036
Surplus	336	377	403	429	473	483
% Surplus	15.4%	17.6%	19.0%	20.5%	23.1%	23.7%
Actual	2198	-	-	-	-	-
Difference	15	-	-	-	-	-
% Difference	0.7%	-	-	-	-	-

Note that a PAN reduction alone does not change the net capacity of the school. Total Capacity, as calculated above, factors in PAN but is predominantly concerned with the capacity of the buildings; net capacity can therefore only be adjusted as a result of significant changes to the building and / or use of space. The total capacity here is therefore the maximum number of potential school places that can be physically accommodated; however, the maximum number of pupils that can be accommodated in any year will be dependent on factors such as the PAN, the class organisation and the number of teaching staff at the school.

Planned/possible actions

Forecasts for this planning area show a significant level of surplus places.

The Local Authority will continue to monitor the number of children and parental preference in this planning area, especially with regards to the housing development of 475 properties that is currently under construction, whilst working collaboratively with schools and trusts and providing the required information to assist the decision-making process