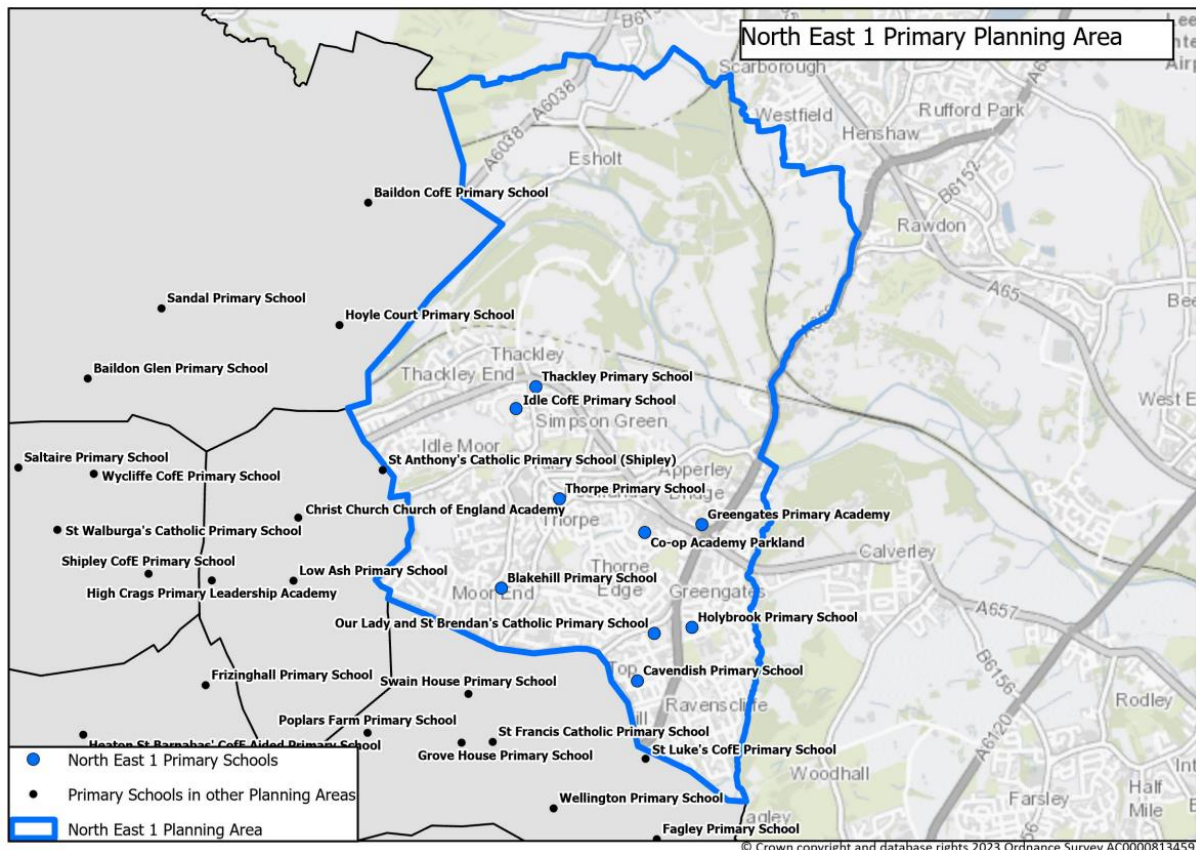


North East 1 Primary School Planning Area

There are nine primary schools in North East 1 planning area, five of which have nursery provision. The area where the primary schools are located is urban but the outline of the planning area also covers some semi-rural parts to the north.

School name	School Type	Multi Academy Trust (MAT)	Published Admission Number (PAN) 2023	Nursery provision
Blakehill Primary School	Community		60	No
Cavendish Primary School	Academy	Exceed Academies Trust	60	Yes
Co-op Academy Parkland	Academy	The Co-operative Academies Trust	30	Yes
Greengates Primary Academy	Academy	Delta Academies Trust	30	Yes
Holybrook Primary School	Academy	Exceed Academies Trust	30	Yes
Idle C of E Primary School	Voluntary Aided		60	No
Our Lady and St Brendan's Catholic Primary School	Academy	Blessed Christopher Wharton Catholic Academy Trust	30	No
Thackley Primary School	Community		60	Yes
Thorpe Primary	Academy	Carlton Academy Trust	30	No

Map showing primary schools in the North East 1 planning area:



Historic numbers of pupils in North East 1

The table below provides historical information on the total number of reception places available (PAN) and number of reception pupils on roll. The total number of school places available is shown against the total number on roll (NOR) to give an overall number and percentage of surplus places (shown as a minus where there is a shortfall).

Year	PAN	Pupils in reception	Spare reception places	Total Places	Total NOR	Surplus places	% Surplus places
2017	420	396	24	2935	2664	271	9.23%
2018	420	376	44	2935	2671	264	8.99%
2019	420	384	36	2935	2652	283	9.64%
2020	420	395	25	2940	2703	237	8.06%
2021	390	387	3	2940	2686	254	8.64%
2022	390	371	19	2940	2684	256	8.71%
2023*	390	368	22	2940	2655	285	9.69%

*Based on Primary school forecast, July 2023

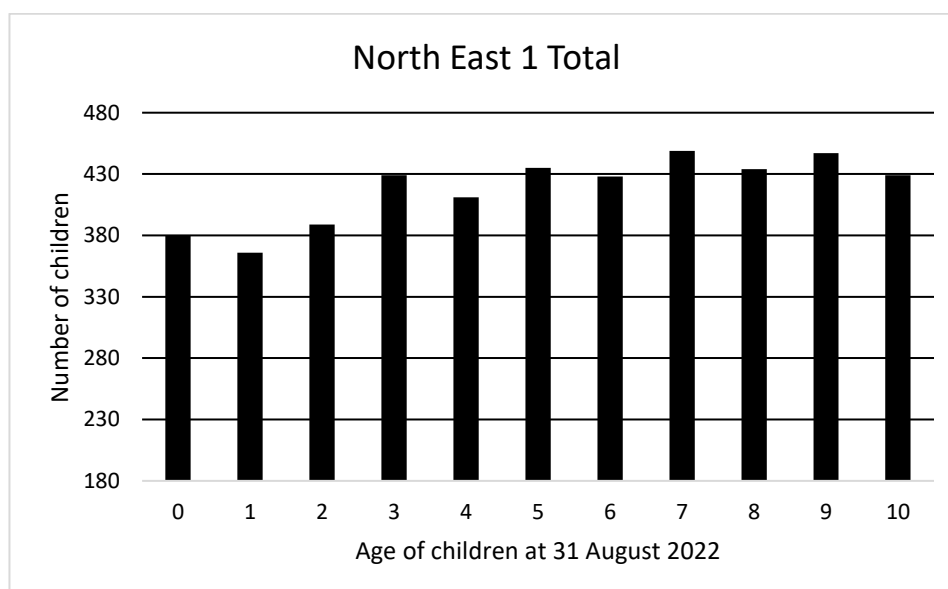
Historic actions and academy conversions

- Parkland Primary School increased its' PAN from 30 to 60 in September 2017.
- Holybrook Primary School converted to academy status in December 2017 under Exceed Academies Trust.
- Parkland Primary School converted to academy status in November 2018 under the Co-op Academies Trust with a name change to Co-op Academy Parkland.
- Greengates Primary School converted to academy status in December 2018 under Delta Academies Trust.
- Our Lady & St Brendan's Catholic Primary converted to academy status in November 2020 under the Blessed Christopher Wharton Catholic Academy Trust.
- Thorpe Primary School converted to academy status in December 2020 under Carlton Academy Trust.
- Co-op Academy Parkland reduced their PAN from 60 to 30 in September 2021.
- Cavendish Primary School converted to academy status in May 2023 under Exceed Academies Trust.

Health Authority Data for North East 1

The number of children recorded in the January 2023 data received from the Health Authority is shown below:

Age at 31 August 2022	0	1	2	3	4	5	6	7	8	9	10
North East 1 Total	380	366	389	429	411	435	428	449	434	447	429
Reception Intake Year	2026	2025	2024	2023	-	-	-	-	-	-	-
Year 7 Intake Year	2033	2032	2031	2030	2029	2028	2027	2026	2025	2024	2023



Forecast methodology for North East 1

The need for primary school places depends on the local child population. Key factors in the forecast are the number of births and children registered with the Health Authority in an area, migration in and around the District and movement of families into new housing developments.

The take up rate of 09% is applied to the health data and the table below shows the calculated number of Reception places required for North East 1 residents in the coming years.

Year of reception intake	2023	2024	2025	2026	2027
Calculated places required	379	353	333	344	338

In addition to these figures, forecasts incorporate trends for children attending schools outside of their local planning area. For North East 1, the highest number of children coming in are from North East 2; the highest number attending elsewhere go to schools in North East 2 as well. Historically, a handful of children have attended schools here from outside of the District and around twenty reception children attend schools in another Local Authority,

Forecasts and historic accuracy for North East 1

The tables below contain forecast data submitted to the DfE as part of the annual School Capacity (SCAP) return. The grey column shows the difference between last year's forecast and the actual number of pupils on roll at the schools at the January school census.

Reception:

Year	2022	2023	2024	2025	2026	2027
PAN	390	390	390	390	390	390
Forecast	366	368	355	343	353	349
Surplus	24	22	35	47	37	41
% Surplus	6.6%	6.0%	9.9%	13.7%	10.5%	11.7%
Actual	371	-	-	-	-	-
Difference	5	-	-	-	-	-
% Difference	1.4%	-	-	-	-	-

Reception to Year 6:

Year	2022	2023	2024	2025	2026	2027
Total Capacity	2940	2940	2940	2940	2940	2940
Forecast	2659	2655	2607	2574	2531	2486
Surplus	281	285	333	366	409	454
% Surplus	10.6%	10.7%	12.8%	14.2%	16.2%	18.3%
Actual	2684	-	-	-	-	-
Difference	25	-	-	-	-	-
% Difference	0.9%	-	-	-	-	-

Note that a PAN reduction alone does not change the net capacity of the school. Total Capacity, as calculated above, factors in PAN but is predominantly concerned with the capacity of the buildings; net capacity can therefore only be adjusted as a result of significant changes to the building and / or use of space. The total capacity here is therefore the maximum number of potential school places that can be physically accommodated; however, the maximum number of pupils that can be accommodated in any year will be dependent on factors such as the PAN, the class organisation and the number of teaching staff at the school.

Planned/possible actions

The Local Authority will continue to monitor the number of children and parental preference in this planning area whilst working collaboratively with schools and trusts and providing the required information to assist the decision-making process. Large scale housing developments are at various stages of application or construction in neighbouring planning areas; the additional children from these developments are included in the overall forecast figures, however, it is much more difficult to predict their effect on the popularity of the local schools.

Whilst surplus places are forecast for this planning area, this is largely due to the area being a net exporter of children to other planning areas. The Health data for this area is much more closely aligned with the combined PAN of the schools here. To protect against an increase in local children requesting places in their 'home' planning area, there are currently no plans to address the surplus here for 2025.