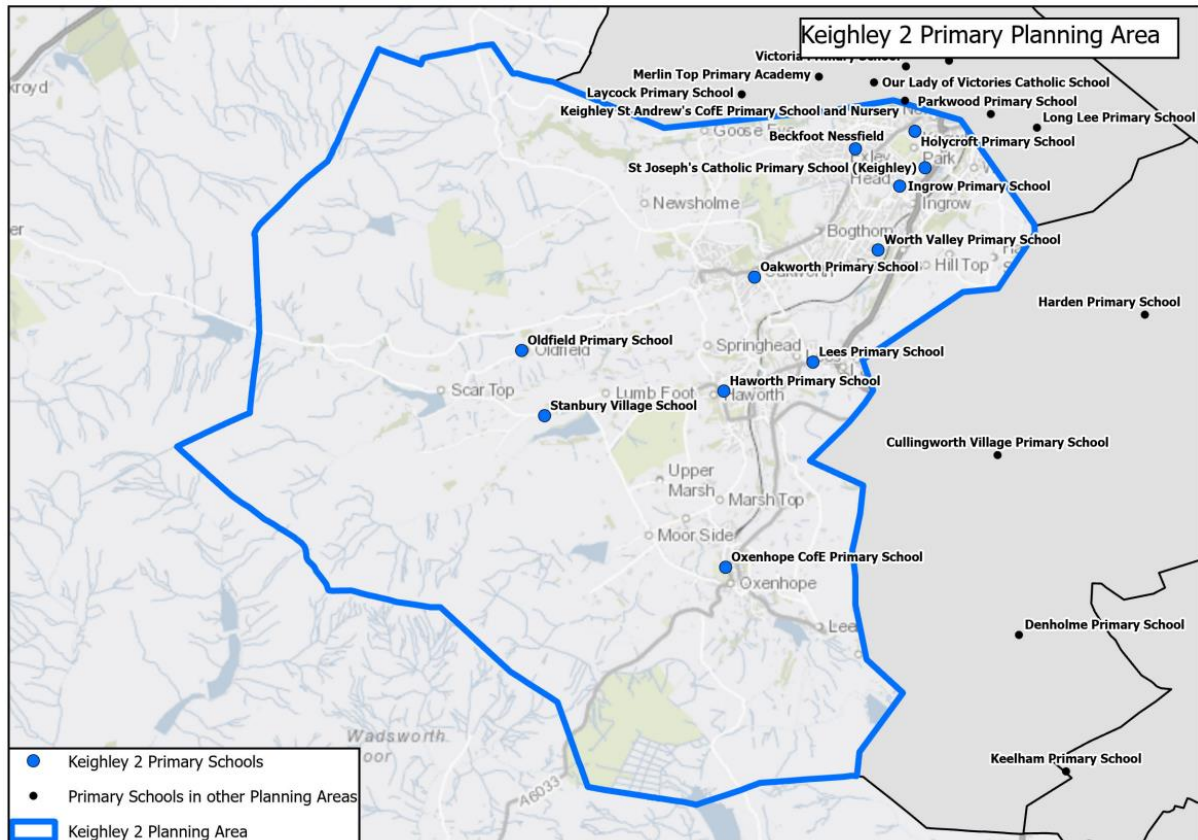


Keighley 2 Primary School Planning Area

There are eleven primary schools in Keighley 2 planning area, ten of which have nursery provision. The planning area covers a wide area to the western border of the District and includes a number of villages, moving down into parts of the town of Keighley.

School name	School Type	Multi Academy Trust (MAT)	Published Admission Number (PAN) 2023	Nursery provision
Beckfoot Nessfield	Academy	Beckfoot Trust	45	Yes
Haworth Primary School	Academy	Bronte Academy Trust	45	Yes
Holycroft Primary School	Academy	Northern Star Academies Trust	45	Yes
Ingrow Primary School	Community		60	Yes
Lees Primary School	Academy	Bronte Academy Trust	30	Yes
Oakworth Primary School	Academy	Bronte Academy Trust	60	Yes
Oldfield Primary School	Academy	Bronte Academy Trust	10	Yes
Oxenhope C of E Primary School	Academy	Bradford Diocesan Academies Trust	30	No
St Joseph's Catholic Primary School	Academy	Blessed Christopher Wharton Catholic Academy Trust	45	Yes
Stanbury Village School	Community		15	Yes
Worth Valley Primary School	Academy	Leading Learners Academy Trust	30	Yes

Map showing primary schools in the Keighley 2 planning area:



Historic numbers of pupils in Keighley 2

The table below provides historical information on the total number of reception places available (PAN) and number of reception pupils on roll. The total number of school places available is shown against the total number on roll (NOR) to give an overall number and percentage of surplus places (shown as a minus where there is a shortfall).

Year	PAN	Pupils in reception	Spare reception places	Total Places	Total NOR	Surplus places	% Surplus places
2017	443	417	26	3092	2825	267	8.64%
2018	443	370	73	3092	2789	303	9.80%
2019	443	384	59	3092	2789	303	9.80%
2020	443	393	50	3109	2794	315	10.13%
2021	443	385	58	3109	2772	337	10.84%
2022	445	330	115	3109	2718	391	12.58%
2023*	415	342	73	3109	2718	391	12.58%

*Based on Primary school forecast, July 2023

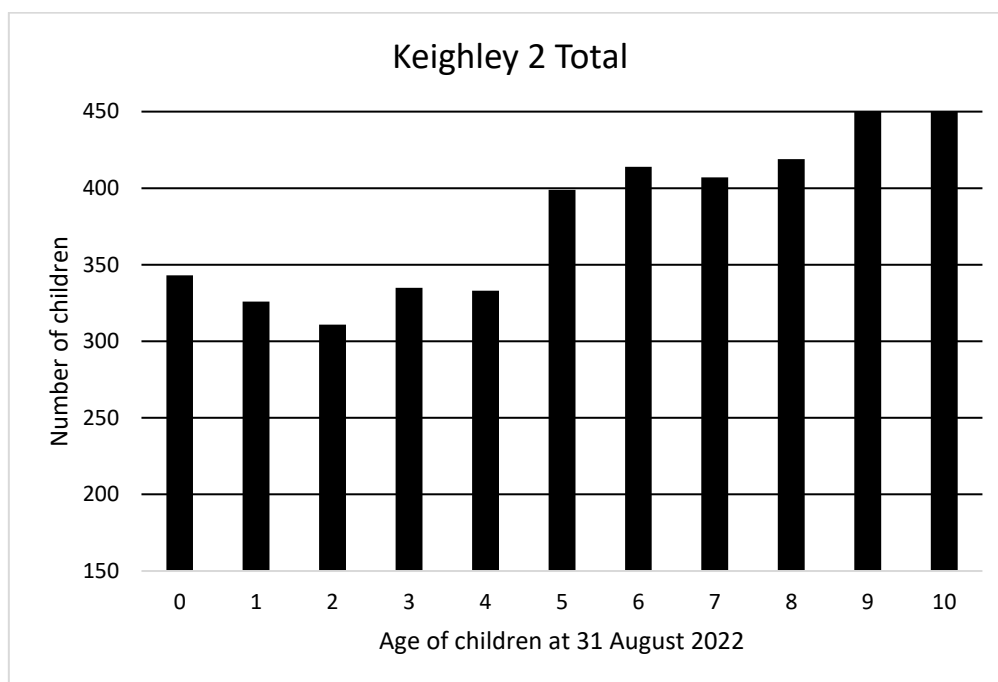
Historic actions and academy conversions

- St Joseph's Catholic Primary School increased their PAN from 30 to 45 from September 2017.
- Holycroft Primary School converted to academy status in September 2018 under the Northern Star Academies Trust.
- Nessfield Primary School converted to academy status in September 2018 under the Beckfoot Trust, with a name change to Beckfoot Nessfield.
- Oldfield Primary School converted to academy status in June 2019 under the Bronte Academy Trust.
- Oldfield Primary School opened a nursery provision for 10 children in September 2020 and increased their PAN from 8 to 10 in September 2021.
- Following consultation, Beckfoot Nessfield has reduced their PAN from 60 to 45 from September 2023. It will reduce from 45 to 30 in September 2024.
- Holycroft Primary School has reduced their PAN from 60 to 45 from September 2023.
- Haworth Primary School has consulted to reduce their PAN from 45 to 30 from September 2024.

Health Authority Data for Keighley 2

The number of children recorded in the January 2023 data received from the Health Authority is shown below:

Age at 31 August 2022	0	1	2	3	4	5	6	7	8	9	10
Keighley 2 Total	343	326	311	335	333	399	414	407	419	458	455
Reception Intake Year	2026	2025	2024	2023	-	-	-	-	-	-	-
Year 7 Intake Year	2033	2032	2031	2030	2029	2028	2027	2026	2025	2024	2023



Forecast methodology for Keighley 2

The need for primary school places depends on the local child population. Key factors in the forecast are the number of births and children registered with the Health Authority in an area, migration in and around the District and movement of families into new housing developments.

The take up rate of 97% is applied to the health data and the table below shows the calculated number of Reception places required for Keighley 2 residents for future years.

Year of reception intake	2023	2024	2025	2026	2027
Calculated places required	327	294	310	331	342

In addition to these figures, forecasts incorporate trends for children attending schools outside of their local planning area. For Keighley 2, the highest number of children coming in are from Keighley 1; the highest number attending elsewhere go to schools in Keighley 1 also. Historically, children attending schools here from outside of the District have not been a factor in the forecast for this area.

Forecasts and historic accuracy for Keighley 2

The tables below contain forecast data submitted to the DfE as part of the annual School Capacity (SCAP) return. The grey column shows the difference between last year's forecast and the actual number of pupils on roll at the schools at the January school census.

Reception:

Year	2022	2023	2024	2025	2026	2027
PAN	445	415	385	385	385	385
Forecast	329	342	311	318	341	352
Surplus	116	73	74	67	44	33
% Surplus	35.3%	21.3%	23.8%	21.1%	12.9%	9.4%
Actual	330	-	-	-	-	-
Difference	1	-	-	-	-	-
% Difference	0.3%	-	-	-	-	-

Reception to Year 6:

Year	2022	2023	2024	2025	2026	2027
Total Capacity	3109	3109	3109	3109	3109	3109
Forecast	2695	2644	2545	2469	2431	2396
Surplus	414	465	564	640	678	713
% Surplus	15.4%	17.6%	22.2%	25.9%	27.9%	29.8%
Actual	2718	-	-	-	-	-
Difference	23	-	-	-	-	-
% Difference	0.9%	-	-	-	-	-

Note that a PAN reduction alone does not change the net capacity of the school. Total Capacity, as calculated above, factors in PAN but is predominantly concerned with the capacity of the buildings; net capacity can therefore only be adjusted as a result of significant changes to the building and / or use of space. The total capacity here is therefore the maximum number of potential school places that can be physically accommodated; however, the maximum number of pupils that can be accommodated in any year will be dependent on factors such as the PAN, the class organisation and the number of teaching staff at the school.

Planned/possible actions

Two PAN reductions were implemented in September 2023 and two further PAN reductions will take place in 2024. The Local Authority will continue to monitor the impact of these changes, the number of children and parental preference in this planning area, whilst working collaboratively with schools and trusts and providing the required information to assist the decision-making process.

Action is also planned in surrounding planning areas, which has the potential to impact on the number of children qualifying for places at schools outside of Keighley 2.