

City of Bradford MDC

www.bradford.gov.uk

**The Bradford Off-Site Learning Provision
Framework Agreement**

Catalogue of Provision

Key Stages 3 and 4

October 2014 – August 2015

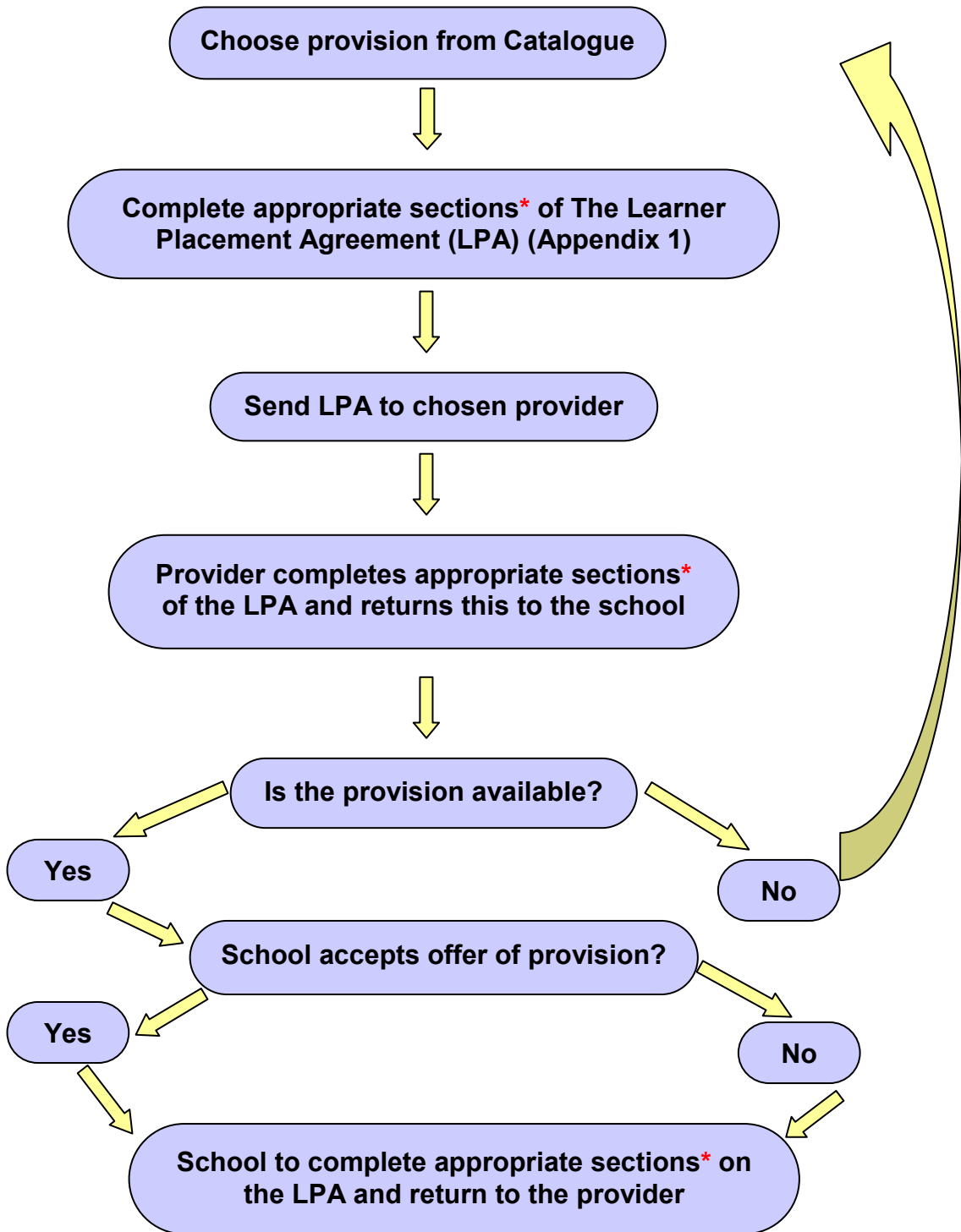
*For use in conjunction with Secondary Schools, Special Schools,
Academies, Pupil Referral Units and Behaviour and Attendance
Collaboratives*

**Bradford Framework for Off-Site Learning Provision
October 2014 – August 2015**

Contents	Page No.
1. Quick Guide to Purchasing Off-Site Learning Provision	3
2. Overview	4
3. Quality Assurance	4
4. Purchasing from the Framework	5
5. Off-Site Learning Provision	5
6. Provision Matrix	6
7. List of Providers in Alphabetical Order	
Academy 21 Limited	7
Age UK Trading	9
Apricot Online Limited	11
Aspire-i Ltd	14
Bradford College	15
Brathay Trust	17
Core Assets Children's Services	19
Educ8 Bradford Limited	20
e:merge (Bradford) Company Ltd	21
Himmat Project	23
Inclusion Trust	25
JAMES (Joint Activities & Motor Education Service)	27
One in a Million	30
PRISM	32
SkillForce	34
Sport Works (Yorkshire) Ltd	36
The Hunslet Club	37
TLG	39
Tute Education Limited	41
Woodland Adventures Yorkshire	43
YES Project (Youth Employability Scheme)	44
YMCA	45
Appendices:	
Appendix 1 Learner Placement Agreement (LPA)	48
Appendix 2 Guidance on completing the Learner Placement Agreement (LPA) Pro Forma	54

1. Quick Guide to Purchasing Off-Site Learning Provision

◀ BEFORE YOU CAN PURCHASE FROM THE FRAMEWORK YOU MUST HAVE COMPLETED AND SIGNED THE ACCESS AGREEMENT AND RETURNED THIS TO BRADFORD COUNCIL ▶



* SEE APPENDIX 2 FOR FULL DETAILED INSTRUCTIONS ON THE PROCESS AND HOW TO COMPLETE THE LPA

2. Overview

Bradford Council has produced the Framework Agreement for Off-Site Learning Provision for use by the Bradford District PRU, Secondary Schools, Behaviour and Attendance Collaboratives, Special Schools and Academies in Bradford. The purpose of this Framework Agreement is to enhance the mainstream education for KS3/4 learners. The framework will bring greater transparency and schools will be more able to access a full range of Off-Site Learning Provision to suit individual's needs and aspirations.

Schools may choose to use the framework to purchase provision for learners and off framework purchases can still be made by schools if they so wish.

Any learner placed by a school in off-site provision, either full-time or part-time, remains on the roll of the school and the school remains responsible for the monitoring of learner progress.

3. Quality Assurance

Bradford Council and its partners expect delivery of high quality provision in a safe environment for each learner accessing off-site learning provision. The Council carried out a challenging tendering process and thorough Quality Assurance standards checks for providers on the framework.

The Quality Assurance process included the following aspects:

- Procedures for monitoring learner attendance
- Behaviour and anti-bullying policies
- Arrangements for learner induction and support
- Involving learners in decision-making and reporting on learner progress
- Arrangements for the safeguarding and welfare of learners
- Staff recruitment checks and reporting concerns
- Health and safety in providers premises
- Suitability and security of providers premises

Providers on the framework will be regularly assessed on their performance by the Council and Bradford District PRU.

Please note the Council has not undertaken financial checks on providers due to the limited risks associated with small scale contracts.

4. Purchasing from the Framework

Schools who select off-site provision for learners from this catalogue will purchase this directly from a provider. **Schools need to sign the Access Agreement form before purchasing provision¹.**

To purchase provision, schools may make a referral to a provider by completing and forwarding a Learner Placement Agreement (LPA) to the provider, at Appendix 1. An electronic word version of the LPA can be obtained from Elisa Atkinson as detailed in the footnote at the bottom of this page. Providers will then complete and return this form to the school making an offer of the availability of the provision for the Learner. Once the provision is confirmed as available the school will decide whether to accept it, and if it does accept then the order will be booked and confirmed to the provider.

This confirmation from the school shall constitute the entering into a legally binding contract, a Call-Off Contract, between the school and the provider, set up in accordance with the Terms and Conditions outlined in the Framework.¹

5. Off-Site Learning Provision

This catalogue gives outline details of the services on offer. Providers in this catalogue are set out in alphabetical order and are not ranked.

Providers may offer qualifications to KS3/4 learners which are approved for use under Section 96 for pre-16 teaching and accredited by Ofqual.

Other learning that does not result in these qualifications will still be accredited in a robust manner in order to allow learners to demonstrate achievement and progress.

This catalogue gives outline details of the services on offer within the following categories.

- **Part-time programme**
- **Full-time programme**
- **Key Stage suitability (KS3 and KS4)**
- **Virtual Learning Environment ('VLE')**

Purchasers may look at the matrix at Section 6 overleaf, and choose a provider which has the type of provision sought and seek full details on the relevant pages. If the provision and cost are suitable, purchasers may make a referral using the LPA form at Appendix 1.

¹ For full details of the Framework, Terms & Conditions, word version of the LPA and Access Agreement please contact Elisa Atkinson
Tel. 07582 101288
Email elisa.atkinson@bradford.gov.uk

6. Provision Matrix

Part Time Programmes	KS3	KS4	VLE	Page No.
Academy21 Limited	✓	✓	✓	7
Age UK Trading		✓		9
Apricot Online Limited	✓	✓	✓	11
Aspire-I Ltd		✓		14
Bradford College		✓		15
Brathay Trust	✓	✓		17
Core Assets Children's Services		✓		19
Educ8 Bradford Limited	✓	✓		20
e:merge (Bradford) Company Ltd	✓	✓		21
Himmat Project	✓	✓		23
Inclusion Trust	✓	✓	✓	25
JAMES (Joint Activities & Motor Education Service)	✓	✓		27
One In A Million	✓	✓		30
PRISM	✓	✓		32
SkillForce	✓	✓		34
Sport Works (Yorkshire) Ltd	✓	✓		36
The Hunslet Club	✓	✓		37
TLG	✓	✓		39
Tute Education Limited	✓	✓	✓	41
Woodland Adventures Yorkshire	✓			43
YES Project (Youth Employability Scheme)		✓		44
YMCA	✓	✓		45
Full Time Programmes²	KS3	KS4	VLE	Page No.
Academy 21 Limited	✓	✓	✓	7
Age UK Trading		✓		9
Bradford College		✓		15
Himmat Project	✓	✓		23
Inclusion Trust	✓	✓	✓	25
JAMES (Joint Activities & Motor Education Service)	✓	✓		27
One In A Million	✓	✓		30
PRISM	✓	✓		32
SkillForce	✓	✓		34
Sport Works (Yorkshire) Ltd	✓	✓		36
The Hunslet Club	✓	✓		37
TLG	✓	✓		39
Tute Education Limited	✓	✓	✓	41
YMCA	✓	✓		45

² Please note schools must check for guidance and changes in legislation prior to placing a learner in a full-time placement.



Course and Programme Information

Name of Organisation		Location of Site/s	
Academy21 Limited		Home, school or centre	
Contact Details			
Contact: Anthony Sullivan Tel. No.: 01438 535001 or 07877 473 868 E-Mail: tony.sullivan@academy21.co.uk Address: 5 Pond Close, Walkern Road, Stevenage, SG1 3QP			
Description of Service Provision			
Course Details			
Academy21 is an online school delivering education (iGCSE, GCSE and A-Level courses) through a virtual classroom and offering high quality, cost-effective education for vulnerable pupils who are unable to attend mainstream school. Academy21 also provide pupils with additional resources and activities to consolidate their learning including a lesson library which pupils can access 24/7.			
Deliverable Units			
<ul style="list-style-type: none"> • Maths • Science • History • Physics • English • Chemistry • ICT • Biology • Preparation for Working Life • Computer Games Development • Business and Communications 			
Suitability: Young people aged 13-18 years			
Course length: From a few weeks up to 2 years and can be part time (5hrs) to full time (25hrs)			
Notice Required: 48 hours from receipt of the enrolment form			
Times of the day		Costs	
Lessons run from 9.00am – 16.00pm		Costs per week for a single subject (5 hours per week) £46	
Timetables will be constructed according to individual requirements.		Costs per week for 5 subjects (25 hours per week) £230 + VAT	
		17% discount for annual in advance payment	
		Additional costs: examination entry fees, local examination arrangements	
Qualifications Offered/Level			
KS3 and Skills Builder Courses (based on the National Curriculum and are for 1 year).			
Maths	English	Science	
Key Stage 4 and 5 Courses			
iGCSE (A* - G)	GCSE (A* - G)	NCFE (Level 2)	
English Literature & Language	Maths	Computer Games Development	
Biology	Business and Communications		
Chemistry			
Physical			
History			
ICT			
Preparation for Working Life			
Year 11 Rescue Courses (18 weeks long)			
iGCSE (C – G)	GCSE	AQA (Level 1 & 2)	Edexcel (Level 1) Functional Skills
English Language	Maths	Preparation for Working Life	English
Physics		Functional Skills ICT	ICT
Biology			Maths

Bespoke Courses

GCSE (A* - G)

Certificate in the Use of Maths

GCSE 'D-C' Booster Maths
and English (after school)

AS Level (A - E)

Mathematics

History

A2 Level (A – E)

Mathematics

History

AQA (Entry Level 3)

Functional Maths

Functional English

Transport Arrangements

Students will access from home, school or centre

Method of Feedback to home and school

Online data available 24/7 and updated lesson by lesson in real-time.

Weekly report and weekly data summary available each Friday. All information accessible anytime, anywhere through secure, web-based learning management system.

Course and Programme Information

<p>Name of Organisation</p> <p>Age UK Trading</p>	<p>Location of Site/s</p> <p>3rd Floor, Elba House 37 Bolton Road Bradford BD1 4DR</p>
<p>Contact Details</p> <p>Name: Gez Morrall – Area Support Manager Tel: 01274 740593 Email: gerard.morrall@ageuk.org.uk Address: 3rd Floor Elba House, 37 Bolton Road, Bradford, BD1 4DR</p>	
<p>Description of Service Provision</p> <p>5 Courses/Options Available</p> <p>1. Course/Option Details – Health and Social Care</p> <p>The Unit Award Scheme (UAS) is a 'can do' accreditation scheme for recognising learning and success. It rewards learners for personal progress and achievements which are often not recognised by more formal qualifications.</p> <p>Deliverable Units</p> <ul style="list-style-type: none"> ● <i>Introduction to First Aid</i> ● <i>Understanding risk in planning an activity session</i> ● <i>Supporting Learning in Care and Education</i> ● <i>Young Leader: Introduction to Youth Work</i> ● <i>Healthy Living</i> ● <i>Effective Communication for Support Work</i> ● <i>Health-related activity sessions for Older People</i> ● <i>Assessing a child's care needs through observation</i> ● <i>Disability Awareness: Access & Accessibility (unit 1)</i> ● <i>Young Workers: Introduction to Youth Work (unit 1)</i> ● <i>Young Workers: Introduction to Youth Work (unit 2)</i> ● <i>Young Workers: Introduction to Youth Work (unit 3)</i> ● <i>Support for Maintenance Cognitive Stimulation Therapy</i> <p>Suitability: Age range 14-16 year olds Course length: To be delivered over a 6 day period, 1 day per week Notice Required: One week</p> <p>2. Course/Option Details –Introduction to Health, Social Care and Children & Young People's Settings</p> <p>This course is aimed at learners who work or want to develop skills and knowledge required for working in the Health and Social Care sector. The course is made up of 10 units; 7 mandatory and 2/3 optional units. The scope contains skills and knowledge which reflect the national standard at Level 1 in Health and Social Care.</p> <p>Deliverable Units</p> <ul style="list-style-type: none"> ● <i>Understand the range of service provision and roles within Health, Social Care, Early Years & Childcare</i> ● <i>Understand the principles and values in Health, Social Care, Early Years and Childcare</i> ● <i>Awareness of protection and Safeguarding in Health, Social Care, Early Years and Childcare</i> ● <i>Introduction to communication in Health, Social Care, Early Years and Childcare</i> ● <i>Introductory Awareness of Equality and Inclusion in Health, Social Care and Children's and Young People's settings</i> ● <i>Introductory Awareness of Health and Safety in Health, Social Care and Children's and Young People's settings</i> ● <i>Introductory Awareness of Person-Centred support in Health, Social Care and Children's and Young People's settings</i> ● <i>Introduction to Dementia</i> ● <i>Introductory Awareness of working with others in Health, Social Care and Children's and Young People's settings</i> ● <i>Introductory Awareness of the importance of Healthy Eating and Drinking for Adults.</i> <p>Suitability: Age range 14-18 year olds Course length: One day per week, for 52 weeks Notice Required: One week</p>	

3. Course/Option Details - AQA Unit Award Scheme PSD

The Unit Award Scheme (UAS) is a 'can do' accreditation scheme for recognising learning and success. It rewards learners for personal progress and achievements which are often not recognised by more formal qualifications.

Deliverable units

- Exploring Curricular Achievements
- Personal Hygiene (Unit 2): Healthy Skin
- In-depth Interviewing Skills
- Managing Personal Finances
- Community Work: Working with the Elderly
- Driving Theory Test
- Applying for a Job.
- Progress and Review with a Learning Mentor
- Basic Drug Awareness and the Law
- Coping with Change or Transition
- Community Work: Working with Older People
- Introduction to Maintaining a Healthy Diet
- Anger management
- Introduction to Developing Community Knowledge

Suitability: Age range 14-16 year olds
Course length: To be delivered over a 6 day period, 1 day per week
Notice Required: One week

4. Course/Option Details –Caring for Children

This course is suitable for anyone wanting to gain knowledge and skills in caring for children. The course allows the learner to develop and practise the skills required for employment and/or career progression in the Childcare sector

Deliverable Units

- Growth and Development of Young Children
- Human Growth and Development
- Sharing Learning Experiences with Children
- Respecting and Valuing Children.

Suitability: Age range 16-18 year olds
Course length: One day per week, for 39 weeks
Notice Required: One week

5. Course/Option Details –Employability and Personal Development

The course help you develop key personal skills, qualities and attitudes required by employers and make progress in education

Deliverable Units (multiple choice)

- Planning for Progression
- Career Planning and making Applications
- Managing Personal Finance
- Community Project
- Contributing to a Team
- Environmental Awareness
- Making the most of Leisure Time
- Preparing for Work Placement
- Interview Skills
- Effective Skills, Qualities and Attitudes for Learning & Work
- Rights and Responsibilities in the Workplace
- Supporting Others
- Enterprise Activity: Producing Products or Services
- Dealing with Problems in Daily Life
- Healthy Living
- Developing Personal Skills for Leadership
- Learning from Work Placement
- Developing own Interpersonal Skills.

Suitability: Age range 14-18 year olds
Course length: Variable (full and part time)
Notice Required: One week

Times of the day

09.30am - 15.30pm
 All programmes can be tailored to meet an individual or group need.

Costs

£35 per day per student
 AGE UK will cover cost of registration and certification.

Qualifications Offered/Level

- Course 1:** AQA Unit Award Scheme Vocational – Health and Social Care
Course 2: City & Guilds Level 1 Certificate in Introduction to Health, Social Care and Children & Young People's Settings
Course 3: AQA Unit Award Scheme PSD
Course 4: City & Guilds Level 1 Award in Caring for Children
Course 5: City & Guilds Level 2 Certificate in Employability and Personal Development (QCF) - 7546-12

Transport Arrangements

We are city centre located and a 5 minute walk from the bus station.

Method of Feedback to home and school

Termly reports/review of progress
 Teacher/Parent meetings, minimum half yearly.

Course and Programme Information

Name of Organisation Apricot Online Limited	Location of Site/s Online learning provision accessed from any location with a computer and a broadband connection
Contact Details Name: Amy Smith Tel: 01242 604985 or 07859 821696 Email: amy@apricotlearningonline.co.uk Address: 2 North Street, Winchcombe, GL54 5LH	
Description of Service Provision. 6 Courses/Options Available Apricot delivers live teaching online as part of a blended learning provision. Courses range from 20 hours for a QCF Award to 39 weeks for GCSEs or equivalent. Access to the courses can take place upon receipt of a fully completed Student Information and Risk Assessment Form (SIRA). 1. Course/Option Details – ‘A’ Levels ‘A’ Level support is provided for appropriate learners Deliverable Units <ul style="list-style-type: none"> • English • Psychology • Geography • Maths • Sociology • Economics • Science • History • Critical Thinking • Religious Studies • Philosophy Suitability: Age range 8 to 18 year olds Course length: Not more than 15 hours per week and up to 39 weeks per year Notice Required: Roll on; roll off in groups (usually 24-48 hours notice). Notice period for 1:1 tuition is 48 hours 2. Course/Option Details – BTEC BTEC support is provided for appropriate learners Deliverable Units <ul style="list-style-type: none"> • IT Users • Learning for Life Suitability: Age range 8 to 18 year olds Course length: Not more than 15 hours per week and up to 39 weeks per year Notice Required: Roll on; roll off in groups (usually 24-48 hours notice). Notice period for 1:1 tuition is 48 hours 3. Course/Option Details – GCSEs (Foundation and Higher) GCSE support is provided for appropriate learners Deliverable Units <ul style="list-style-type: none"> • English • Chemistry • Geography • ICT • French • Maths • Physics • Economics • Computing • German • Science • History • PSE/PSHE • Media Studies • Italian • Biology • Religious Studies • Business Studies • General Humanities Suitability: Age range 8 to 18 year olds Course length: Not more than 15 hours per week and up to 39 weeks per year Notice Required: Roll on; roll off in groups (usually 24-48 hours notice). Notice period for 1:1 tuition is 48 hours 4. Course/Option Details – iGCSEs	

iGCSE support is provided for appropriate learners

Deliverable Units

- English
- Chemistry
- History
- Maths
- Physics
- Business Studies
- Science
- Computer Science
- Religious Studies
- Biology
- ICT

Suitability: Age range 8 to 18 year olds
Course length: Not more than 15 hours per week and up to 39 weeks per year
Notice Required: Roll on; roll off in groups (usually 24-48 hours notice).
Notice period for 1:1 tuition is 48 hours

5. Course/Option Details – Functional Skills

Functional Skill support is provided for appropriate learners

Deliverable Units

- English
- Maths
- ICT

Suitability: Age range 8 to 18 year olds
Course length: Not more than 15 hours per week and up to 39 weeks per year
Notice Required: Roll on; roll off in groups (usually 24-48 hours notice).
Notice period for 1:1 tuition is 48 hours

6. Course/Option Details – Qualifications and Credit Framework (QCF)

QCF support is provided for appropriate learners.

Deliverable Units

- Science
- Chemistry
- Sociology
- French
- Biology
- Physics
- Psychology
- German
- Employability Skills
- Economics
- Learning for Life
- Italian
- Childcare and Development
- English
- Religious, Moral & Philosophical Studies
- Media

Suitability: Age range 8 to 18 year olds
Course length: 20 hours usually spread over a number of weeks
Notice Required: Roll on; roll off in groups (usually 24-48 hours notice).
Notice period for 1:1 tuition is 48 hours

Times of the day

Flexible timetabling.

Commissioned groups and 1:1s are entirely at the referrer's discretion.

Only Nationwide Groups and Inclusion Room timetables are set in stone.

Costs

Groups

- Ranging from £10.00/hour to £25.00/hour, depending on the number of students and number of groups contracted
- Up to 10 online subscriptions included (e.g. TeachIt English and History, My Maths, Sam Learning, Education City, etc.)
- Full attendance, soft skills, and performance reporting

Inclusion Room

- 15 hours/week (3 hours/day) of English, Maths and Science
- £8K/year for 3 generic usernames offering instant access
- £12K/year for 5 generic usernames offering instant access
- Rotating 6-week curriculum of "fun learning" designed entirely to re-engage students
- Schools can join together and coordinate purchases to split among them

1:1

- £35.00/hour for personalised lessons re: exam board, timetables, etc.
- Up to 10 online subscriptions included (e.g., TeachIt English and History, My Maths, Sam Learning, Education City, etc.)
- Full attendance, soft skills, and performance reporting

Qualifications Offered/Level

<p>1. Course/Option Details: 'A' Levels</p> <p>2. Course/Option Details: BTEC</p> <p>3. Course/Option Details: GCSEs (Foundation & Higher)</p> <p>4. Course/Option Details: iGCSEs</p> <p>5. Course/Option Details: Functional Skills</p> <p>6. Course/Option Details: QCF Awards (e.g. Employability Skills)</p>	
<p>Transport Arrangements</p> <p>No transportation required.</p> <p>As an internet/virtual school, all provision is web-based.</p> <p>Students only need a computer and a broadband connection. Headsets also desired for maximum benefit.</p>	<p>Method of Feedback to home and school</p> <p>All attendance, assignment grades and weekly teacher reports are available to both students and schools. Weekly reports consist of soft skills measurements (settling to work, motivation, confidence, punctuality) and progress (NC Levels/GSCE grades).</p> <p>Teachers comment weekly on work undertaken and student input.</p> <p>Termly and half-termly reports include learning goals and actions required to achieve those goals.</p>



realising potential

Course and Programme Information

Name of Organisation Aspire-i Ltd	Location of Site/s Onward House 2 Baptist Place Bradford BD1 2PS
Contact Details Name: Robert Mifsud Tel: 01274 829400 Email: Rob.mifsud@aspire-i.com Address: Onward House, 2 Baptist Place, Bradford, BD1 2PS	
Description of Service Provision Course/Option Details – Army Preparation / Sports Fitness programme This course is for someone who would like a career in the Army or the Sport and Fitness sector. Aspire-i has developed a programme across their training centres to help someone get prepared for their future career whilst working towards a qualification in Sports and Active Leisure. There are two elements to this course, both giving great insight into a career within the Armed Forces and sports sector; <ul style="list-style-type: none"> ❖ Valuable experience with the Armed Forces helping learners to improve confidence, teamwork and military fitness/sport. We have strong contacts with the Army careers office in Leeds who will offer support with the learners application, should they decide that the Armed Forces is their chosen career. Aspire-i will support learners to understand the different job roles within the Armed Forces and offer one to one support with the initial compulsory stages of joining the forces. Learners will attend three fitness sessions a week to improve their cardiovascular fitness and muscular strength which is needed to be at a certain standard to pass selection. ❖ The second side of the programme is for learners that are keen to pursue a career within the Sports and Fitness industry. Confidence, team work, leading, coaching, fitness as well as job knowledge within the leisure industry will be developed. Learners will undertake a work placement for a minimum of 20 hours to gain valuable experience. The course will also improve knowledge of how the body works during exercise. Students will be supported in applying for jobs whilst on the course and also be expected to create an up to date CV and covering letter. During the time on the programme all learners will complete a recognised Level 1 BTEC in Sports and Active Leisure Certificate as well as improve their Functional Skills Level from Entry 1 up to Level 2. The Course is available to all levels of learners, especially those with an interest in the Armed Forces. Deliverable Units <ul style="list-style-type: none"> ● <i>Planning Own Fitness Programme</i> ● <i>Physical Activities for Children</i> ● <i>Taking Part in Exercise and Fitness</i> ● <i>In Sport and Active Leisure</i> Suitability: Year 10 onwards Course length: Part Time - 300 guided learning hours over 3 months Notice Required: 1 Month	
Times of the day 10.00am – 14.00pm	Costs PPE - £100.00 each Exam registration and claims - £89.00
Qualifications Offered/Level Edexcel BTEC Certificate in Sports and Active Leisure – Level 1	
Transport Arrangements Learners make their own way via public transport or school minibus	Method of Feedback to home and school Contact school each day for attendance End of session reports as formative feedback.



Course and Programme Information

<p>Name of Organisation</p> <p>Bradford College</p>	<p>Location of Site/s</p> <p>Appleton Science Building Trinity Green Building David Hockney Building Lister Building Old Building (all on the main Bradford College campus)</p>
<p>Contact Details</p> <p>Name: Tracy Wilkinson Tel: 01274 433309 Email: t.wilkinson@bradfordcollege.ac.uk Address: Bradford College, Great Horton Road, Bradford, BD7 1AY</p>	
<p>Description of Service Provision</p> <p>3 Courses/Options Available</p> <p>Bradford College offer courses in Functional Skills, GCSE's and Vocational Qualifications. In addition the College offers a range of full time post 16 courses in 14 of the 15 sector subject areas and pre-16 learners are able to join these courses upon request. The full course listing is available on the College website or contact should be made with the College to discuss the individual learner's needs. Timetables are variable for the post 16 provision and this can be discussed further at the point of enquiry.</p> <p>1. Course/Option Details – Functional Skills</p> <p>Functional skills support is provided for appropriate learners as part of the main programme.</p> <p>Deliverable Units</p> <ul style="list-style-type: none"> • Maths • English <p>Suitability: Year 10 and Year 11 Course length: As part of the main programme detailed below Notice Required: One week (<i>subject to availability</i>)</p> <p>2. Course/Option Details – GCSE's</p> <p>Bradford College offers GCSE's for learners working at the right level. As part of the programme, students will have the option of taking one Vocational Qualification.</p> <p>Deliverable Units</p> <ul style="list-style-type: none"> • Maths • English • Science <p>Suitability: Year 10 and Year 11 Course length: Up to 4 days per week for 1 year, although many can be taken into a second year to increase qualification level and experience. Notice Required: One week (<i>subject to availability</i>)</p> <p>3. Course/Option Details – Vocational Qualifications</p> <p>Bradford College offers Vocational courses from Entry Level through to Level 2. The majority of the courses are one year in duration and many can be taken into a second year to increase qualification level and experience.</p> <p>Deliverable Units</p> <ul style="list-style-type: none"> • Sport • Business • Childcare • Construction • Hair & Beauty • Hospitality & Catering • Public Services <p>Suitability: Year 10 and Year 11 Course length: 1 day per week (Wednesday) for 1 year, although many can be taken into a second year to increase qualification level and experience. Notice Required: One week (<i>subject to availability</i>)</p>	

<p>Times of the day</p> <p>Courses will generally run from 09.30am - 15.00pm each day (unless a learner joins a post 16 programme for which the times/days are variable)</p>	<p>Costs</p> <p>Course/Options 1 and 2 – Functional Skills and GCSE's Full-time places are charged at £4,500 per year and all course associated costs including equipment, PPE/Kits/Uniforms and registration fees are included.</p> <p>Course/Option 3 – Vocational qualifications</p> <p>Business / Childcare / Public Services / Sport</p> <table border="0"> <tr> <td>5.5 hours per week @ £7 per hour x 36 weeks</td> <td style="text-align: right;">£1,386</td> </tr> <tr> <td>Registration cost per learner</td> <td style="text-align: right;"><u>£ 84</u></td> </tr> <tr> <td>Total</td> <td style="text-align: right;"><u>£1,470</u></td> </tr> </table> <p>No additional costs for uniforms etc for these courses.</p> <p>Construction / Hair & Beauty / Hospitality & Catering</p> <table border="0"> <tr> <td>5.5 hours per week @ £9 per hour x 36 weeks</td> <td style="text-align: right;">£1,782</td> </tr> <tr> <td>Registration cost per learner</td> <td style="text-align: right;"><u>£ 84</u></td> </tr> <tr> <td>Total</td> <td style="text-align: right;"><u>£1,866</u></td> </tr> </table> <p>Please note: PPE/Kit/Uniforms are purchased by the College and charged to schools. Prices vary from £30 - £100 dependent on the course.</p>	5.5 hours per week @ £7 per hour x 36 weeks	£1,386	Registration cost per learner	<u>£ 84</u>	Total	<u>£1,470</u>	5.5 hours per week @ £9 per hour x 36 weeks	£1,782	Registration cost per learner	<u>£ 84</u>	Total	<u>£1,866</u>
5.5 hours per week @ £7 per hour x 36 weeks	£1,386												
Registration cost per learner	<u>£ 84</u>												
Total	<u>£1,470</u>												
5.5 hours per week @ £9 per hour x 36 weeks	£1,782												
Registration cost per learner	<u>£ 84</u>												
Total	<u>£1,866</u>												
<p>Qualifications Offered/Level</p> <p>Course/Option 1 - Functional Skills City & Guilds Functional Skills English (Entry Level 1-3, Level 1 and Level 2) QAN dependent on Level City & Guilds Functional Skills Maths (Entry Level 1-3, Level 1 and Level 2) QAN dependent on Level</p> <p>Course/Option 2 - GCSE's WJEC GCSE English (Foundation & Higher) – QAN 500/7913/X AQA GCSE Maths (Foundation & Higher) – QAN 500/7856/2 AQA GCSE Science (Foundation & Higher) – QAN 600/0892/1</p> <p>Course/Option 3 – Vocational Qualifications Pearson BTEC Award in Business (Level 1/2) – QAN 600/4786/0 Pearson BTEC First Diploma in Children's Play Learning and Development (Level 1/2) – QAN 600/6814/0 Pearson BTEC Certificate in Construction (Level 1) – QAN 500/6591/9 City & Guilds Principal Learning in Hair & Beauty Studies 2 YEAR PROGRAMME (Level 1) – QAN 600/6479/1 City & Guilds Certificate in Introduction to the Hair & Beauty Sector (Level 1) – QAN 500/6347/9 Pearson BTEC Certificate in Introduction to Hospitality Industry (Level 1) – QAN 500/7521/4 Pearson BTEC Award in Public Services (Level 1/2) – QAN 601/0926/9 Pearson BTEC Certificate in Sport and Active Leisure (Level 1) – 500/4989/6</p> <p><i>For learners who are operating below Level 1 there are a range of vocational qualifications (in the above areas) offered, the package is tailored to the individual learners level of learning</i></p>													
<p>Transport Arrangements</p> <p>Students are expected to travel to and from the College independently.</p>	<p>Method of Feedback to home and school</p> <p>Attendance is reported back to schools on the daily basis. Schools retain responsibility for notifying parents of non-attendance.</p> <p>Progress reports are issued termly (Christmas, Easter and end of the course) to both parents and schools. Where difficulties with students are encountered the College will make initial contact with the school to discuss this.</p>												



Course and Programme Information

Name of Organisation Brathay Trust and subsidiary Brathay Services Ltd	Location of Site/s Cathedral Halls Stott Hill Bradford BD1 4EH
Contact Details Name: Jenni MacDuff Tel: 0754 592 6670 or 0844 225 2934 Email: jenni.macduff@brathay.org.uk Address: Cathedral Hall, Stott Hill, Bradford, BD1 4EG	
Description of Service Provision 3 Courses/Options Available There are 3 part-time programmes available, each with one module per term. The courses are intended to complement mainstream or the District PRU provision, rather than replace it, and are therefore not offered full-time. Pupils can attend one or more modules or courses dependent on need. The courses are aimed at young people who are at risk of underachieving or becoming NEET, and aim to re-engage reluctant learners, build aspirations and improve academic outcomes. All courses have basic skills, IT, communication and team skills embedded in the learning. One to one support will be given where appropriate and levels will be tailored to individual need identified from their initial assessments. All young people will have an Individual Education Plan (IEP), with an emphasis on literacy and numeracy. Healthy lunches will be provided and pupils will be involved in lunch preparation. <ol style="list-style-type: none"> Course/Option Details – Arts Award (Bronze and Silver) Deliverable Units <ul style="list-style-type: none"> Music Production – make a CD; learn composition, lyrics, sound effects, editing and recording Visual Arts – tasters in a range of media, leading to a piece of art work and art exhibition Performing Arts – dance, music and acting learning leading to a performance or DVD production Suitability: Age range 11 to 16 year olds Course length: 1 day per week over 3 terms Notice Required: New places will be offered at the beginning of term and at the beginning of half-terms, though we may be able to accommodate pupils mid-term Course/Option Details – Health & Wellbeing (OCN Level 1 and Level 2) Deliverable Units <ul style="list-style-type: none"> Healthy Mind – self-esteem, resilience, anger management, drugs and alcohol 2+1 – positive relationships, sexual health, body image and making healthy choices Independent Living – money management, healthy eating, parenthood and accessing support Suitability: Age range 13 to 16 year olds Course length: 1 day per week over 3 terms Notice Required: New places will be offered at the beginning of term and at the beginning of half-terms, though we may be able to accommodate pupils mid-term Course/Option Details – Citizenship (OCN Level 1 and Level 2) Deliverable Units <ul style="list-style-type: none"> Community and Society – making a positive difference; a social action project Enterprise and Employability – planning ahead, assertiveness and making choices Environment and Leadership – conservation and outdoor learning Suitability: Age range 11 to 16 year olds Course length: 1 day per week over 3 terms Notice Required: New places will be offered at the beginning of term and at the beginning 	

of half-terms, though we may be able to accommodate pupils mid-term

Times of the day 09.30am – 16.00pm during weekdays, but alternative arrangements can be made where required.		Costs £75 per day per pupil Additional costs may apply if transport or additional specialist support is required	
Qualifications Offered/Level <ol style="list-style-type: none">1. Course Details – Arts Award (Bronze and Silver offered)2. Course Details – Health & Wellbeing (OCN Level 1 and Level 2 offered)3. Course Details – Citizenship (OCN Level 1 and Level 2 offered) Bronze or Level 1 is equivalent to GCSE grades D-G Silver or Level 2 is equivalent to GCSE grades A-C			
Transport Arrangements Young people will be encouraged to travel independently. Provision is based in a central location in the city centre. Individual cases will be looked at and transport arranged where possible, including taxis, being escorted on public transport and support with travel planning.		Method of Feedback to home and school Parents will be involved in the young person's IEP, through meetings at induction and termly reviews. Termly reports will be sent home and to the school. Brathay staff will attend any SEN meetings or any other meetings that are required. Brathay will keep in regular contact with parents regarding attendance, behaviour and positive outcomes through emails, texts phone calls and face to face meetings.	



Course and Programme Information

Name of Organisation Core Assets Children's Services	Location of Site/s Home, school or agreed venue
Contact Details Name: Sarah Martin Tel: 0113 307 1150 Email: sarah.martin@coreassets.com Address: Unit 7, Turnberry Park, Gildersome, Morley, Leeds, LS27 7LE	
Description of Service Provision Course Details Core Assets Alternative Education provides an intensive individualised programme for learners with additional needs. The course is designed for those at risk of exclusion or excluded from school, providing a curriculum that addresses both educational and behavioural needs on a 1:1 basis and results in accreditation opportunities for learners as well as building life and employability skills. Learning can take place at the home school, in local facilities such as libraries or in the young person's home. This ensures a safe learning environment which is completely tailored to the student's needs. The provision can be short-term to enable quick turnaround, back into mainstream school, or longer term, dependent on the needs of the learner. Deliverable Units <ul style="list-style-type: none"> • <i>Tuition Support in English and Maths</i> • <i>Life and Employability Skills</i> • <i>AQA Unit Award Scheme in a range of topics</i> • <i>Certificate in Personal Effectiveness</i> • <i>Functional Skills in Literacy, Numeracy and ICT</i> Suitability: Age range 14 to 16 year olds Course length: 4 weeks to a full academic year. Minimum 4 hours to maximum 20 hours per week during term time. Notice Required: Minimal notice required for an introduction meeting.	
Times of the day Typically from 10.00am -14.00pm. However, this can be flexible and adjusted to ensure maximum engagement from the learner.	Costs Costs range from £26.00 per hour for an educational support worker to £65.00 per hour for a qualified teacher. Programmes will be fully bespoke and prices are flexible within this range to reflect that.
Qualifications Offered/Level <ul style="list-style-type: none"> • GCSE Tuition support, English and Maths (Examinations will be taken at the home school) • ASDAN Certificate in Personal Effectiveness, including Life and Employability Skills Level 1 and 2 • NOCN Functional Skills in Literacy, Numeracy and ICT providing a GCSE equivalent D to G level. • The AQA Unit Award Scheme is offered to motivate learners, support the reengagement process and accredit skills in a range of topics. 	
Transport Arrangements Transport will be arranged on an individual basis, agreed between Core Assets and the home school at the time of procurement. Travel is charged at 45 pence per mile.	Method of Feedback to home and school Attendance and progress will be fed back in the form of daily session reports, forwarded weekly. Any issues will be addressed immediately. Full student reviews on progress, attendance and attainment report to the school and parents/carers on a termly basis.

Course and Programme Information

<p>Name of Organisation Educ8 Bradford Limited present LearnFit Sports Academy Bradford</p>	<p>Location of Site/s Manningham Sports Centre Carlisle Road Bradford BD8 8BD</p>
<p>Contact Details Name: Tabraz Rahman (Academy Manager) Tel: 07753 975597 Email: Tabrazrahman@educ8group.com Address: Manningham Sports Centre, Carlisle Road, Bradford, BD8 8BD</p>	
<p>Description of Service Provision 2 Courses/Options Available</p> <p>1. Course/Option Details – ‘Wanna Be a Sports Coach’ This course is aimed at young people with an interest in sport. Learners will work towards BTEC sport qualifications which meet the headline measures on the performance table as well as functional skills in Maths and English. The course is flexible and can be tailored to the requirements of any individual school. The Learner will gain skills that will enable them to progress in the Sports and Leisure industry and the offer extends to support learners with progression post 16. LearnFit Sports Academy may offer apprenticeships for high performing learners.</p> <p>Suitability: Young People from school year groups 7,8,9,10,11,12 and 13 (Key Stage 3 and Key Stage 4 learners)</p> <p>Course length: From 38 days to 152 days depending on the level of the qualification aimed for. Can be undertaken between 1 and 4 days a week for up to 3 years.</p> <p>Notice Required: Roll on; roll off programme (subject to availability)</p> <p>2. Course/Option Details – Functional Skills Functional skills support is provided in Maths and English for appropriate learners as part of the main programme.</p> <p>Suitability: Young People from school year groups 7,8,9,10,11,12 and 13 (Key Stage 3 and Key Stage 4 learners)</p> <p>Course length: Incorporated into the main programme. Can be over a three year period, depending on the qualification aimed for.</p> <p>Notice Required: Roll on; roll off programme (subject to availability)</p>	
<p>Times of the day Opening times 09.45am - 14.45pm Monday to Friday (subject to availability) Maximum capacity of 20 learners per day.</p>	<p>Costs. £47.50 per day, discounts available for group bookings. <i>(This price is inclusive of all qualifications)</i></p>
<p>Qualifications Offered/Level</p> <p>Course/Option 1 BTEC Sports Certificate in Sport and Active Leisure – Level 1 BTEC Sports Diploma in Sport and Active Leisure BTEC Sports Leaders – Level 1 BTEC First Award in Sport – Level 2 BTEC First Certificate in Sport – Level 2 BTEC First Extended Certificate in Sport – Level 2 BTEC First Diploma in Sport – Level 2</p> <p><i>Level 1 is the equivalent of 1 GCSE D – G grades and Level 2 is the equivalent of 1 GCSE A*-C grades</i></p> <p>Course/Option 2 Functional Skills English and/or Maths</p>	
<p>Transport Arrangements Transport to and from the provision to be provided and funded by each school.</p>	<p>Method of Feedback to home and school An overview report every half term to learner, school and parent which will include attendance, timekeeping, qualification progression, unit completion, personal progression, incidents and accidents related to learner.</p>

Course and Programme Information

<p>Name of Organisation</p> <p>e:merge (Bradford) Company Ltd</p>	<p>Location of Site/s</p> <p>E:merge Building 18 Pawson Street Bradford BD4 8BY</p>
<p>Contact Details</p> <p>Name: Andy Sykes, Tel: 01274 660244, Email: andys@emergeonline.org.uk Address: 18 Pawson Street, Bradford, BD4 8BY</p>	
<p>Description of Service Provision</p> <p>3 Courses/Options Available</p> <p>All three courses focus on the social and emotional barriers to learning and removing these so that young people are better able to access education in other contexts.</p> <p>1. Course/Option Details – Boys Sports Intervention</p> <p>This programme offers sports related activities which enable the development of team buildings skills, improves social awareness, builds interaction skills, and develops confidence and emotional resilience.</p> <p>Suitability: Key Stage 3 and Key Stage 4 boys Course length: Part time, 1 or 2 days per week (<i>Minimum attendance 1 term but can be more effective over 2 or 3 terms</i>) Notice Required: Generally 6 weeks before the start of the next term for groups however may be less for individuals.</p> <p>2. Course/Option Details - Girls Personal and Social Development Intervention</p> <p>This programme develops the self-esteem and self-image of participants. Learners will increase their understanding of relationships with peers, adults and the opposite sex. The course will develop emotional resilience and raise the aspirations and ability to make informed choices.</p> <p>Suitability: Key Stage 3 and Key Stage 4 girls Course length: Part time, 1 or 2 days per week (<i>Minimum attendance 1 term but can be more effective over 2 or 3 terms</i>) Notice Required: Generally 6 weeks before the start of the next term for groups however may be less for individuals.</p> <p>3. Course/Option Details - Mixed Gender Intervention</p> <p>This programme picks up on elements of both courses 1 and 2 above and enables the same social and emotional development. The course aims to increase and develop the awareness of the communities the learners live within, the social issues of their communities and the city, and develop the aspirations and capacity of each individual to make a difference.</p> <p>Suitability: Key Stage 3 and Key Stage 4 girls and boys Course length: Part time, 1 or 2 days per week (<i>Minimum attendance 1 term but can be more effective over 2 or 3 terms</i>) Notice Required: Generally 6 weeks before the start of the next term for groups however may be less for individuals.</p>	
<p>Times of the day</p> <p>Flexible days Times 9.00/9.30am - 14.30/15.00pm</p>	<p>Costs</p> <p>£48 to £55 per pupil per day dependent on the needs of the young people and the required staffing levels of the group.</p> <p>School to meet the costs of qualifications/certificates.</p>

Qualifications Offered/Level

Course 1: Community Sports Leader Award, which could lead on to Coaching Awards if attendance is long term and/or Duke of Edinburgh Award – Bronze

Course 2: ASDAN Programme – various modules within this structure

Course 3: ASDAN Programme – various modules within this structure and/or Archbishop of York Community Young Leaders Award

Transport Arrangements

Local young people to make their own way to e:merge.

Easily accessible for much of south east Bradford however a minibus is available, subject to availability.

Method of Feedback to home and school

Attendance reports can be made daily or weekly as required.

Brief written progress reports would be sent to schools weekly with more detailed reports sent termly and annually.



Course and Programme Information

Name of Organisation Himmat Project, Ummid Independent School	Location of Site/s The Old Sunday School, Bakes Street, Bradford BD7 3EX Toller Lane, 2 Duckworth Lane, Bradford BD9 5EP
Contact Details Name: Joanne Watts or Rahat Khan Tel: 01274 577866 Email: Ummid@Himmat.org Address: Ummid Independent School, The Old Sunday School, Bakes Street, Bradford BD7 3EX	
Description of Service Provision 3 Course/Options Available Various courses available and provision availability is flexible. Referrals can be made quickly and efficiently without delay if risk analysis shows a risk of harm to self, students, staff or public. Referring professional must agree with school risk is manageable. In circumstances where information with regards to risk is not available there will be a delay with admission whilst risk management processes are carried out. 1. Course/Option Details – Functional Skills Qualifications Functional Skills support is provided for appropriate learners at Entry Level 1, 2 and 3 and Levels 1 and 2. Deliverable Units <ul style="list-style-type: none"> • Maths • English • ICT Suitability: KS3 , KS4 and 6 th form Course length: Respite, full or part time Notice Required: Flexible subject to risk management processes 2. Course/Option Details – BTEC Qualifications Himmat Project offers BTEC Level 1 Certificates for appropriate learners. Deliverable Units <ul style="list-style-type: none"> • Sport and Active Leisure • Art and Design Suitability: KS3 , KS4 and 6 th form Course length: Respite, full or part time Notice Required: Flexible subject to risk management processes 3. Course/Option Details – City & Guilds Qualifications Himmat Project can provide various level City and Guilds Qualifications for appropriate learners Deliverable Units <ul style="list-style-type: none"> • Introduction to Hospitality and Catering Suitability: KS3 , KS4 and 6 th form Course length: Respite, full or part time Notice Required: Flexible subject to risk management processes	
Times of the day 9.00am -15.00pm Monday-Friday	Costs Costs will start from £60.00 per day however additional costs may apply depending on the level of risk and interventions required or additional requirements for students with Special Educational Needs

Qualifications Offered/Level

Course/Option 1 – Functional Skills

Entry Level 1,2,3 and Level 1 and 2 Qualifications in English, Maths and ICT

Course/Option 2 – BTEC (Edexcel)

Certificate in Sport and Active Leisure (QCF) Level 1 QAN No 500/4989/6
Certificate in Art and Design (QCF) Level 1 QAN No 500/6540/3

Course/Option 3 - City & Guilds

Introduction to the Hospitality/Catering Entry Level 3 7107-03

Transport Arrangements

Students will make their own way to the provision unless transport is required due to vulnerability.

Method of Feedback to home and school

Attendance

Schools and parents will be notified on any day a student is absent by a phone call in the morning. Additionally monthly reports include attendance.

Progress

Parents and referring agencies will receive a monthly progress update report which includes academic progress, attainment, behaviour and attendance. End of week telephone calls are made to all parents to encourage them to support their son/daughter with either behaviour management and/or praise.



Inclusion Trust

Course and Programme Information Form

Name of Organisation Inclusion Trust	Location of Site/s Virtual learning provision accessible at home, centre or school environment										
Contact Details Name: Maggie Kalnins Tel: 01279 816082 Email: Maggie@inclusiontrust.org Address: The Coach House, Stansted Hall, Stansted, Essex, CM24 8UD											
Description of Service Provision Course Details Inclusion Trust work with marginalised young people who may have learning barriers, including those with physical or mental health concerns, those from traveller and migrant communities, and those from troubled families. The learners face distinct challenges that prevent them from accessing physical learning settings for a proportion or all of their full time provision entitlement. Learning is structured in a flexible way to cater for learners of all abilities. Through these measures we are able to ensure that the six day obligation for pupils after exclusion, and one day for looked after children are fully met. Deliverable Units <ul style="list-style-type: none"> • English • Italian • Computing • Art and Photography • Maths • German • Applied Sciences • The Arts • French • ICT • Personal and Social Skills • Economic, Business and Employment Skills <p>Suitability: Ages 11 to 18 years (target group KS3 and KS4 and post 16 learners with SEN, EAL, BESD and those categorised as LAC)</p> <p>Course length: Variable, full and part time bespoke packages</p> <p>Notice Required: We can provide connection to our learning platform within one day of referral being made and within 6 days where the installation of technology and longer-term learning plans are required.</p>											
Times of the day Access to the learning platform and resources is via a secure virtual community and is available 24 hours a day, 7 days a week and 365 days a year.	Costs Long term packages Includes: technological hardware, broadband connection, cost of awards processing (up to six awards). Additional costs of £60 per award thereafter. <table border="0" style="margin-left: 20px;"> <tr><td>3 Months</td><td>£3,000</td></tr> <tr><td>6 Months</td><td>£6,000</td></tr> <tr><td>12 Months</td><td>£8,000</td></tr> </table> 1 year contract equivalent to £160 per week. Minimum Contract is 3 months Short term packages <table border="0" style="margin-left: 20px;"> <tr><td>4 Weeks</td><td>£150 per week</td></tr> <tr><td>8 + Weeks</td><td>£130 per week</td></tr> </table> Minimum contract is 4 weeks (digital equipment and broadband is not included). Referrer specified: Variable cost according to requirements	3 Months	£3,000	6 Months	£6,000	12 Months	£8,000	4 Weeks	£150 per week	8 + Weeks	£130 per week
3 Months	£3,000										
6 Months	£6,000										
12 Months	£8,000										
4 Weeks	£150 per week										
8 + Weeks	£130 per week										

Qualifications Offered/Level

iGCSE

- English • Maths • Business Studies • MFL (French, German and Italian) • Art and Photography

GCSE

We are able to support additional GCSEs if required, please enquire for more information

BTEC (Edexcel-Pearsons)

- Applied Sciences Level 1 and Level 2
- Computing Level 1 and Level 2

Additional Qualifications from Entry Level to Level 2

- **English:**
Entry Level Certificate in Literacy; Functional Skills and ESOL
- **Maths:**
Entry Level Certificate in Numeracy and Functional Skills
- **ICT:**
Certificate and Award in IT User Skills; Award in Podcasting and Award in Music Technology
- **The Arts:**
Animation; Creative Craft; Art and Design and Performance Skills
- **Economic, Business and Employment Skills:**
Employability Skills; Travel and Tourism and Personal Money Management
- **Personal and Social Skills:**
Effective Thinking Skills; Learning to Learn; Personal and Social Development; Caring for a Child/Children; Childcare and Education; Alcohol Awareness; Sexual Health Awareness; Substance Misuse Awareness; Improving Personal Exercise; Health and Nutrition; Equality and Diversity; Sustainable Development and Interpersonal Skills

Referring organisations act as exam centres for GCSE and BTEC awards.

We have supported GCSEs with AQA, EdExcel, CIE, and OCR.

Transport Arrangements

Inclusion Trust's learning provisions is entirely online. Students access learning from their homes, or any other suitable location including schools/youth centres through a secure, closed online community.

Method of Feedback to home and school

We capture baseline data from referrers and during the induction process.

Our internal systems include reporting on a young person's progress against bespoke individual learning plans (ILP) on a weekly basis. They also demonstrate what action has been taken to get the young person back on track where engagement and progress have stalled.

Our subject experts support the tracking of progress of units for all researches with whom they are working against exam board criteria.

Reports are produced for families and referrers half termly. Reports demonstrate a researcher's progress over the course of the reporting period, detailing steps made within their long and short term ILP and clearly evidencing how they have improved beyond their baseline or last assessment.

Referrers can request reports on progress on a more frequent basis where required.

Referrers also have access to daily attendance data and weekly progress reports through a unique login to Inclusion Trust's monitoring systems.

Destination reporting is also carried out in part to coordinate post 16 progression and reduce NEET outcomes.



Course and Programme Information

<p>Name of Organisation</p> <p>Joint Activities & Motor Education Service (JAMES)</p>	<p>Location of Site/s</p> <p>JAMES Independent School (Garage and Academic), Eric Gibbs Centre, Highfield Garage, Frizinghall Road, Frizinghall, Bradford BD9 4JB</p> <p>JAMES Marine Division, Shipley Wharf, Shipley BD17 7DW</p> <p>JAMES Tramshed (Garage and Academic), South Street, Keighley BD21 1SW</p> <p>JAMES Garage, Arum Street, Canterbury, Bradford BD5 9LE</p> <p>JAMES Garage, TFD Youth Centre, Broadstone Way, Holme Wood, Bradford BD4 9BU</p> <p>JAMES Garage, Reeve Road, Buttershaw, Bradford BD6 3PU</p> <p>JAMES ELU, Strensall Green, Buttershaw, Bradford BD6 2AP</p> <p>JAMES ECRU, Holme Wood Centre, Holme Wood, Bradford BD4 9BU</p> <p>JAMES, 5 the Drive, 5 Central Drive, Keighley BD22 7AE.</p>
<p>Contact Details</p> <p>Name: Mandy Lakes (Independent School, Girl Empower and Positive Futures) 07969690185 Kevin Metcalfe (Garage and Marine) 07968750730</p> <p>Tel: 01274 483075 – Head Office</p> <p>Email: enquiries@jamesuk.org or www.jas-bmep.org.uk</p> <p>Address: JAMES, Eric Gibbs Centre, Frizinghall Road, Frizinghall, Bradford, BD9 4BU</p>	
<p>Description of Service Provision</p> <p>6 Courses/Options Available</p> <p>All young people accessing the JAMES provision have access to the width and breadth of our additional PSD and wrap around support services. This includes formal provision ranging from a substances misuse programme to embedded elements of improving behaviour and social skill development. JAMES have become a trusted point of contact and can help individuals to access additional services such as CAMHS, parenting courses or counselling, whilst also linking into our internal Families First service, Restorative Justice and Child Parent Violence programmes where appropriate.</p> <p>1. Course/Option Details – Motor Vehicle Maintenance</p> <p>Access to meaningful vocational placements and experiences, giving the learner opportunity to work on a range of 'live' vehicles. JAMES engages with both male and females who have an interest in motor vehicles ranging from motor bikes to vans. During the placement learners develop a wide range of skills from brakes to body work, specialising where appropriate. Embedded within their placement are the IMI qualifications (aged 14+ only). Learners can gain up to a Level 2 in IMI, which will support progression, such as to Bradford College who currently deliver the Level 3 qualification.</p> <p>Suitability: Young people aged 12-18</p> <p>Course length: One day a week or full time within JAMES Independent school.</p> <p>Notice Required: Roll on; roll off</p> <p>Location: Frizinghall, Keighley, Buttershaw, Holme Wood or Canterbury (subject to availability)</p> <p>2. Course/Option Details - Marine Division</p> <p>Our fleet of boats on the Leeds to Liverpool canal, run out of our Shipley Wharf base and young people can access the provision in small groups (1:5 ratio). Learners undertake a wide range of sessions from environmental work, to boat engine repair, to traditional trade and dry stone walling, to boat handling and personal development. Young people have access to the IMI qualifications and their Boat Handling and Skippering awards.</p> <p>Suitability: Young people aged 12-18</p> <p>Course length: Tuesday to Thursday.</p> <p>Notice Required: Roll on; roll off</p>	

3. Course/Option Details - Independent School Frizinghall

This programme operates from JAMES Independent School in Frizinghall, where young people can attend on a full time basis. We offer a full alternative education package with an academic focus for those young people whose needs are not fully met within other education settings. JAMES will engage learners with a variety of support needs including SEN and looked after young people, providing them with a personalised education package for example including vocational days in the garage. Full time learners will be able to access qualifications equivalent to 5 GCSE's. We offer curriculum time and schemes of work relating to PE, RE and Science but currently do not offer formal qualifications in these subjects.

Deliverable Units

- Business
- PE
- PSD
- Science
- Health and Social Care
- RE
- Citizenship
- Functional Skills (English, Maths and ICT)
- Vocational Qualification of Marine
- Vocational Qualification of Mechanics

Suitability: Young people aged 13-18
Course length: Full-time.
Notice Required: Roll on; roll off

4. Course/Option Details - Girl Empower

This all female group engages disengaged and vulnerable girls, at risk from a range of factors including; CSE, grooming, risk taking behaviour, isolation and bullying. This is a small group and the programme will be tailored to meet the needs for the cohort. Social and emotional support is provided. Within the group peers develop crucial support roles for each other. The formal content is embedded within creative and varied sessions, from mug decorating with sexual health messages to talking to a local older people's group about the impact of behaviour. Learners gain access to ASDAN Wider Key Skills; Problem Solving, Improving Own Learning and Working with Others.

Suitability: Females aged 11-18
Course length: Wednesdays only.
Notice Required: Roll on; roll off
Location: Frizinghall

5. Course/Option Details - Positive Futures – Sport, Art, Substance Misuse, Community and Crime and Girls, ASB (12-19)

This programme supports the wider education package for students who have an interest in Sport, Art or require support to deal with conflict resolution, behaviour and ASB. We work closely with the schools and Police in the Keighley area and respond to the group's needs. Young people undertake work around a wide range of sessions, such as; film making, healthy eating, kayaking and substance misuse. The programme looks to build resilience factors and engage young people in positive activities. Learners have access to ASDAN Wider Key Skills; Problem Solving, Improving Own Learning and Working with Others, plus Duke of Edinburgh Awards and Functional Skills where appropriate.

Deliverable Units

- Sport
- Art
- Substance Misuse
- Community and Crime and Girls

Suitability: Young people aged 12-19
Course length: Up to 2 days per week (one day is an all female group)
Notice Required: Roll on; roll off
Location: Tramshed Keighley and 5 The Drive Keighley

6. Course/Option Details - Bespoke Provision

Bespoke packages to meet the referrer's needs; for example JAMES ran an intensive programme for year 7 pupils. Trained, qualified and experienced staff will operate and deliver a wide range of provision, suiting the needs of the learners. Please speak with Mandy or Kevin if you wish to explore this option.

Suitability: Young people aged 11-18
Course length: Part time as required
Notice Required: To suit the needs of the funders
Location: ECRU in Holme Wood, ELU in Buttershaw and Keighley Tramshed sites

<p>Times of the day</p> <p>Course/Option 1: 09.15am - 15.15pm. Course/Option 2: 09.15am - 15.15pm. Course/Option 3: 09.15am - 15.15pm. Course/Option 4: 09.30am - 15.00pm. Course/Option 5: 09.30am - 15.30pm. Course/Option 6: 09.00am - 15.30pm or part day sessions to meet the needs of the funders.</p>	<p>Costs</p> <p>£60 per young person, per day. All qualifications and exam costs are included in this price.</p> <p>PPE – (Garage sites) - safety boots will be required.</p> <p>JAMES have shared boots available for learners to use until they are able to purchase their own.</p>																								
<p>Qualifications Offered/Level</p> <p>Qualifications on the national Learning Aims Database:</p> <p>BTEC First (SCAAT pointed for GCSE equivalent)</p> <table border="0"> <tr> <td>Health and Social Care</td> <td>Level 1 and Level 2</td> </tr> <tr> <td>Business</td> <td>Level 1 and Level 2</td> </tr> </table> <p>Edexcel – Functional Skills</p> <table border="0"> <tr> <td>English</td> <td>Entry Level to Level 2</td> </tr> <tr> <td>Maths</td> <td>Entry Level to Level 2</td> </tr> <tr> <td>ICT</td> <td>Entry Level to Level 2</td> </tr> </table> <p>ASDAN Wider Key Skills</p> <table border="0"> <tr> <td>Problem Solving</td> <td>Level 1 and Level 2</td> </tr> <tr> <td>Improving Own Learning</td> <td>Level 1 and Level 2</td> </tr> <tr> <td>Working with Others</td> <td>Level 1 and Level 2</td> </tr> </table> <p>Other Qualifications:</p> <table border="0"> <tr> <td>IMI (Institute of Motor Industry)</td> <td>Up to Level 2</td> </tr> <tr> <td>Personal & Social Development (P.S.D)</td> <td>Award and Certificate (Entry 3 to Level 2)</td> </tr> <tr> <td>Community Boating Association</td> <td>Boat Handling and Boat Skippers Awards</td> </tr> <tr> <td>Duke of Edinburgh Award</td> <td></td> </tr> </table>		Health and Social Care	Level 1 and Level 2	Business	Level 1 and Level 2	English	Entry Level to Level 2	Maths	Entry Level to Level 2	ICT	Entry Level to Level 2	Problem Solving	Level 1 and Level 2	Improving Own Learning	Level 1 and Level 2	Working with Others	Level 1 and Level 2	IMI (Institute of Motor Industry)	Up to Level 2	Personal & Social Development (P.S.D)	Award and Certificate (Entry 3 to Level 2)	Community Boating Association	Boat Handling and Boat Skippers Awards	Duke of Edinburgh Award	
Health and Social Care	Level 1 and Level 2																								
Business	Level 1 and Level 2																								
English	Entry Level to Level 2																								
Maths	Entry Level to Level 2																								
ICT	Entry Level to Level 2																								
Problem Solving	Level 1 and Level 2																								
Improving Own Learning	Level 1 and Level 2																								
Working with Others	Level 1 and Level 2																								
IMI (Institute of Motor Industry)	Up to Level 2																								
Personal & Social Development (P.S.D)	Award and Certificate (Entry 3 to Level 2)																								
Community Boating Association	Boat Handling and Boat Skippers Awards																								
Duke of Edinburgh Award																									
<p>Transport Arrangements</p> <p>Young people are expected to access their placement independently. There are good public transport links to all bases and the main Frizinghall site is directly next to Frizinghall train station.</p> <p>For some programmes JAMES may be able to offer central pick up and drop off points.</p> <p>If learners are not able to independently access provision then additional support could be considered.</p>	<p>Method of Feedback to home and school</p> <p>Feedback provided to the referrer which includes:</p> <ul style="list-style-type: none"> - Morning and afternoon attendances - Punctuality - Session reports - Incident reports - Communication records (i.e. with parents) - Progression reports (levels achieved) - ILP progress and SEN target progress reports - Annual reports <p>JAMES is happy to provide additional information to meet the referrer's needs.</p>																								



Course and Programme Information Form

Name of Organisation One In A Million Alternative Provision	Location of Site/s Cliffe Terrace Bradford BD8 7DY
Contact Details Name: Paddy Gallagher (A P Principal) Tel: 01274 306745 Email: paddy.gallagher@oneinamillion.org.uk Address: One In A Million, Cliffe Terrace, Bradford BD8 7DY	
Description of Service Provision 4 Courses/Options Available One in a Million is currently a full time alternative provision but would be agreeable to exploring the suitability of part time arrangements for some learners. 1. Course/Option Details – Functional Skills Functional skills are currently offered from Entry Level 1 to Level 2 Deliverable Units <ul style="list-style-type: none"> • Maths • English • ICT Suitability: Key Stage 3 and Key Stage 4 Course length: Dependent on existing skills, levels of each learner and progress towards agreed Functional Skills target Notice Required: Minimal but sufficient to facilitate the successful integration of any new learner 2. Course/Option Details – GCSE GCSE support is provided for appropriate learners Deliverable Units <ul style="list-style-type: none"> • Maths • English Suitability: Key Stage 3 and Key Stage 4 Course length: Personalised revision/consolidation appropriate to the needs of either year 10 or year 11 learners Notice Required: Minimal but sufficient to facilitate the successful integration of any new learner 3. Course/Option Details – Junior Sports Leader Suitability: Key Stage 3 and Key Stage 4 Course length: Minimum of 1 term, dependent on existing skills level Notice Required: Minimal but sufficient to facilitate the successful integration of any new learner 4. Course/Option Details – Sports BTEC This qualification is split into 4 modules. All modules need to be completed to secure full qualification. Suitability: Key Stage 3 and Key Stage 4 Course length: Full or Part Time. 120 guided learning hours. Notice Required: Minimal but sufficient to facilitate the successful integration of any new learner	

<p>Times of the day</p> <p>08.30am – 14.30pm (Mon to Thurs) 08.30am – 13.00pm (Fri)</p> <p>From September 2014 the timetable contains a degree of flexibility</p>	<p>Costs</p> <p>£70 per day plus additional accreditation/certificate costs.</p>
<p>Qualifications Offered/Level</p> <p>Course/Option 1 - Functional Skills</p> <p>Maths Entry Level 1 to Level 2 English Entry Level 1 to Level 2 ICT Entry Level 1 to Level 2</p> <p>Course/Option 2 - GCSE's</p> <p>GCSE support in English and Maths</p> <p>Course/Option 3</p> <p>Junior Sports Leader Award Level 1</p> <p>Course/Option 4 – BTEC</p> <p>Sports BTEC Level 1</p>	
<p>Transport Arrangements</p> <p>Independent travel</p> <p>Student use of appropriate bus/rail passes and provision of tickets from One In A Million</p>	<p>Method of Feedback to home and school</p> <p>Weekly report cards providing attendance, behaviour, engagement and achievement will be sent to parents/carers.</p> <p>Each academic year three One In A Million advanced placement learning conferences are attended by parent/carers which provide opportunities to discuss learner progress against their individual targets.</p>



Course and Programme Information

<p>Name of Organisation</p> <p>Prism Youth Project</p>	<p>Location of Site/s</p> <p>Prism Club – Main Site, Walker Drive, Girington, Bradford BD8 9ES Prism City Farm - Walker Drive, Girington, Bradford BD8 9ES Prism Woodville Activity Centre – Woodville Road, Keighley BD20 6JA In School – Babies Project</p>																																	
<p>Contact Details</p> <p>Name: Tracy Wheatley - Operations Manager Tel: 01274 487633 Email: tracy.wheatley@prismyouthproject.org Address: Walker Drive, Girington, Bradford BD8 9ES</p>																																		
<p>Description of Service Provision</p> <p>2 Courses/Options Available</p> <p>1. Course/Option Details – BABIES (Borrow A Baby In Educational Setting) Programme This programme is divided into two elements, 10 weekly 2 hour sessions delivered in school, followed by a three day residential off site. The project is for young men and women, who due to a various array of reasons have low self-esteem, are at risk of teenage pregnancy or risky sexual behaviour. The project builds confidence and empowers participants to make informed and positive choices about relationships, sexual wellbeing and parenthood. The young person keeps their portfolio along with a copy of their big brother style video diary. This can then be shared with parents and carers.</p> <p>Deliverable Units</p> <table border="0"> <tr> <td>● <i>Body Image</i></td> <td>● <i>Relationships and Emotions</i></td> <td>● <i>Assertiveness – what is it?</i></td> </tr> <tr> <td>● <i>Sexual Health</i></td> <td>● <i>Future Careers and Ambitions</i></td> <td>● <i>Meeting the Virtual Baby</i></td> </tr> <tr> <td>● <i>Assertiveness Skills</i></td> <td>● <i>Preparation for Residential</i></td> <td>● <i>Residential</i></td> </tr> </table> <p>Suitability: Female and Male Young People Course length: 10 x 2 hour sessions in school plus 3 day residential off site over a weekend Notice Required: 2 weeks (<i>Max group size 10</i>) Location: Delivered within a school environment and includes a 3 day residential off site</p> <p>2. Course/Option Details - Prism Independent School Prism Independent School provides a wide selection of alternative accreditation programmes to enhance main stream education particularly for learners who may have become disengaged, are at risk of truanting, have low educational achievement and behavioural difficulties. Courses consist of bespoke packages which can be tailored to meet individual need. Vocational qualifications can be gained from Entry Level 1 to Level 2</p> <p>Deliverable Units</p> <table border="0"> <tr> <td>Vocational</td> <td>Functional Skills</td> <td>Enrichment Activities</td> </tr> <tr> <td>● <i>Construction</i></td> <td>● <i>Maths</i></td> <td>● <i>Anger Management</i></td> </tr> <tr> <td>● <i>Creative Media</i></td> <td>● <i>English</i></td> <td>● <i>Duke of Edinburgh Award</i></td> </tr> <tr> <td>● <i>PSD</i></td> <td>● <i>ICT</i></td> <td>● <i>Sport Opportunities including Wall Climbing</i></td> </tr> <tr> <td>● <i>Sport</i></td> <td></td> <td>● <i>One to One support</i></td> </tr> <tr> <td>● <i>Land Based Studies</i></td> <td></td> <td>● <i>PSHE – 1:1 Health Support Worker</i></td> </tr> <tr> <td>● <i>Interactive Media</i></td> <td></td> <td>● <i>Breathing Spaces – Horticultural to support young people affected by issues relating to Mental Health</i></td> </tr> <tr> <td>● <i>Animal Care</i></td> <td></td> <td></td> </tr> </table> <p>Suitability: Key Stage 3 and Key Stage 4 Young People Course length: Full or part time Vocational Qualifications – minimum of 2 days per week for 1 academic year to allow the maximum guided learning hours to achieve Award, Certificate or Diploma. Functional Skills – 1 day (5 hours) each week for an academic year Notice Required: 2 weeks (<i>negotiable</i>) Location: Prism Club, Prism City Farm and/or Prism Woodville Activity Centre</p>		● <i>Body Image</i>	● <i>Relationships and Emotions</i>	● <i>Assertiveness – what is it?</i>	● <i>Sexual Health</i>	● <i>Future Careers and Ambitions</i>	● <i>Meeting the Virtual Baby</i>	● <i>Assertiveness Skills</i>	● <i>Preparation for Residential</i>	● <i>Residential</i>	Vocational	Functional Skills	Enrichment Activities	● <i>Construction</i>	● <i>Maths</i>	● <i>Anger Management</i>	● <i>Creative Media</i>	● <i>English</i>	● <i>Duke of Edinburgh Award</i>	● <i>PSD</i>	● <i>ICT</i>	● <i>Sport Opportunities including Wall Climbing</i>	● <i>Sport</i>		● <i>One to One support</i>	● <i>Land Based Studies</i>		● <i>PSHE – 1:1 Health Support Worker</i>	● <i>Interactive Media</i>		● <i>Breathing Spaces – Horticultural to support young people affected by issues relating to Mental Health</i>	● <i>Animal Care</i>		
● <i>Body Image</i>	● <i>Relationships and Emotions</i>	● <i>Assertiveness – what is it?</i>																																
● <i>Sexual Health</i>	● <i>Future Careers and Ambitions</i>	● <i>Meeting the Virtual Baby</i>																																
● <i>Assertiveness Skills</i>	● <i>Preparation for Residential</i>	● <i>Residential</i>																																
Vocational	Functional Skills	Enrichment Activities																																
● <i>Construction</i>	● <i>Maths</i>	● <i>Anger Management</i>																																
● <i>Creative Media</i>	● <i>English</i>	● <i>Duke of Edinburgh Award</i>																																
● <i>PSD</i>	● <i>ICT</i>	● <i>Sport Opportunities including Wall Climbing</i>																																
● <i>Sport</i>		● <i>One to One support</i>																																
● <i>Land Based Studies</i>		● <i>PSHE – 1:1 Health Support Worker</i>																																
● <i>Interactive Media</i>		● <i>Breathing Spaces – Horticultural to support young people affected by issues relating to Mental Health</i>																																
● <i>Animal Care</i>																																		

<p>Times of the day</p> <p>Course 1 – BABIES Can be delivered anytime within school hours to suit the contracting school’s requirements.</p> <p>3 day residential will be planned alongside the school curriculum and usually takes place over a weekend.</p> <p>Course/Option 2 – Prism Independent School Courses available from 09.00am - 14.45pm</p>	<p>Costs</p> <p>Course 1 – BABIES</p> <table border="0"> <tr> <td>Programme delivery 63 hours @ £16 per hour</td> <td style="text-align: right;">£1,008</td> </tr> <tr> <td>Planning, Preparation & Travel Time 18 hr @ £16 per hour</td> <td style="text-align: right;">£ 288</td> </tr> <tr> <td colspan="2">Residential Costs</td> </tr> <tr> <td>Transport</td> <td style="text-align: right;">£ 250</td> </tr> <tr> <td>Accommodation</td> <td style="text-align: right;">£ 400</td> </tr> <tr> <td>Food</td> <td style="text-align: right;">£ 250</td> </tr> <tr> <td>Management Fee</td> <td style="text-align: right;"><u>£ 219</u></td> </tr> <tr> <td>Total</td> <td style="text-align: right;"><u>£2,415</u></td> </tr> </table> <p>Course/Option 2 – Prism Independent School £65.00 per day, inclusive of course registration fees, exam and certificate fees</p>	Programme delivery 63 hours @ £16 per hour	£1,008	Planning, Preparation & Travel Time 18 hr @ £16 per hour	£ 288	Residential Costs		Transport	£ 250	Accommodation	£ 400	Food	£ 250	Management Fee	<u>£ 219</u>	Total	<u>£2,415</u>				
Programme delivery 63 hours @ £16 per hour	£1,008																				
Planning, Preparation & Travel Time 18 hr @ £16 per hour	£ 288																				
Residential Costs																					
Transport	£ 250																				
Accommodation	£ 400																				
Food	£ 250																				
Management Fee	<u>£ 219</u>																				
Total	<u>£2,415</u>																				
<p>Qualifications Offered/Level</p> <p>Course/Option 1: BABIES Asdan short course Qualification in ‘Sex & Relationships’</p> <p>Course/Option 2: Prism Independent School</p> <p>Vocational Qualifications - BTEC (Edexcel is the awarding body)</p> <table border="0"> <tr> <td>Construction</td> <td>Entry Level to Level 2 *</td> </tr> <tr> <td>Sport</td> <td>Entry Level to Level 2*</td> </tr> <tr> <td>Interactive Media</td> <td>Entry Level to Level 1</td> </tr> <tr> <td>Creative Media</td> <td>Level 2*</td> </tr> <tr> <td>Land Based Studies</td> <td>Entry Level to Level 1</td> </tr> <tr> <td>Animal Care</td> <td>Level 2*</td> </tr> <tr> <td>PSD</td> <td>Entry Level to Level 2*</td> </tr> </table> <p>Functional Skills - BTEC (Edexcel is the awarding body)</p> <table border="0"> <tr> <td>Maths</td> <td>Entry Level 1 to Level 2*</td> </tr> <tr> <td>English</td> <td>Entry Level 1 to Level 2*</td> </tr> <tr> <td>ICT</td> <td>Entry Level 1 to Level 2*</td> </tr> </table> <p>* Level 2 is the equivalent to GCSE grade A to C</p> <p>Enrichment Duke of Edinburgh Award</p>		Construction	Entry Level to Level 2 *	Sport	Entry Level to Level 2*	Interactive Media	Entry Level to Level 1	Creative Media	Level 2*	Land Based Studies	Entry Level to Level 1	Animal Care	Level 2*	PSD	Entry Level to Level 2*	Maths	Entry Level 1 to Level 2*	English	Entry Level 1 to Level 2*	ICT	Entry Level 1 to Level 2*
Construction	Entry Level to Level 2 *																				
Sport	Entry Level to Level 2*																				
Interactive Media	Entry Level to Level 1																				
Creative Media	Level 2*																				
Land Based Studies	Entry Level to Level 1																				
Animal Care	Level 2*																				
PSD	Entry Level to Level 2*																				
Maths	Entry Level 1 to Level 2*																				
English	Entry Level 1 to Level 2*																				
ICT	Entry Level 1 to Level 2*																				
<p>Transport Arrangements</p> <p>Course/Option 1: BABIES Activity will take place within the school.</p> <p>Transport for the residential will be supplied and is included in the cost of the full project.</p> <p>Course/Option 2: Prism Independent School Students will make their own transport arrangements; however this can be negotiated with the contracting body but will include an additional cost.</p>	<p>Method of Feedback to home and school</p> <p>Course/Option 1: BABIES Tutors will work alongside teaching staff within the school to do joint evaluations.</p> <p>Learners complete a portfolio during the project which includes comments, observations and feedback on areas such as their behaviour, team work, participation and increased awareness around the issues raised.</p> <p>Course/Option 2: Prism Independent School Feedback will be given through telephone calls, attendance reports, progress reports, meetings, letters and home visits (if required) providing an holistic service.</p> <p>The frequency of feedback is variable i.e. weekly, monthly, termly depending on the contracting bodies requirements of the Learner Placement Agreement and call off contract reviews.</p> <p>Prism always holds an annual achievement event enabling learners to showcase their work.</p>																				



Course and Programme Information

Name of Organisation SkillForce	Location of Site/s At the local host schools and/or PRU
Contact Details Name: Miles Curtis - Regional Director North (interim) Tel: 07788 831090 Email: Miles.curtis@skillforce.org Address: SkillForce, C/O Building 56, Deverell Barracks, Ripon, North Yorkshire, HG24 2RD	
Description of Service Provision 3 Courses/Options Available: SkillForce approach is to engage, prepare and develop. Instructors use activity-based learning in the classroom and activities beyond it to inspire and raise levels of achievement. We have a range of programmes tailored to age group, the needs of the young person and the school. Programmes can last for a few months or be throughout an academic year. We have the tools and experienced staff to deliver three outcomes; <ul style="list-style-type: none"> ❖ Help bring the hardest-to-reach young people back into the fold; ❖ Engage those who need a more tailored approach and help them find the next steps in education, work or training, and; ❖ Prepare children for the all-important step from primary to secondary education. SkillForce lessons happen in school time, on or off the school site. Our work complements the school's existing curriculum. Our programmes help develop the learner's character, their confidence and self-awareness. At the end of that journey, the young people are more employable, have greater awareness of their own skills, and are ready to take the next step in their lives. <ol style="list-style-type: none"> 1. Course/Option Details – <i>Headline Measures</i> SkillForce deliver recognised headline measure courses which are the equivalent of one GCSE <p>Deliverable Units</p> <ul style="list-style-type: none"> ● <i>Sports and Active Leisure</i> ● <i>Sport</i> <p>Suitability: Primary, Secondary and post 16 students Course length: Full, part time or one day per week for an academic year Notice Required: Not usually required</p> 2. Course/Option Details – <i>Section 96 Qualifications</i> SkillForce offer various Qualifications up to Level 3 for appropriate learners. <p>Deliverable Units</p> <ul style="list-style-type: none"> ● <i>Uniform Public Services</i> ● <i>Work Skills</i> ● <i>CoPE</i> ● <i>AoPE</i> ● <i>Wider Key Skills</i> ● <i>Personal and Social Development</i> ● <i>Employability</i> <p>Suitability: Primary, Secondary and post 16 students Course length: Full, part time or one day per week for an academic year Notice Required: Not usually required</p> 3. Course/Option Details – <i>Other Vocational Qualifications</i> SkillForce offer other Vocational Qualifications for appropriate learners <p>Deliverable Units</p> <ul style="list-style-type: none"> ● <i>Sports Leader</i> ● <i>Duke of Edinburgh</i> ● <i>First Aid</i> ● <i>National Navigators Award</i> ● <i>SkillForce Prince's Award</i> ● <i>SkillForce Curriculum</i> <p>Suitability: Primary, Secondary and post 16 students Course length: Full, part time or one day per week for an academic year Notice Required: Not usually required</p> 	

<p>Times of the day</p> <p>09.00am - 15.00pm</p>	<p>Costs</p> <p>Between £32 and £50 per day depending on the type of course undertaken. These are “all in” costs, there are no hidden extras.</p>
<p>Qualifications Offered/Level</p> <p>Course/Option 1 - Head Line Measures</p> <p>BTEC (Pearson) Sport and Active Leisure Level 1*</p> <p>BTEC (Pearson) Sport Level 1* and Level 2**</p> <p>* Level 1 is the equivalent of GCSE Grade D-G **Level 2 is the equivalent of GCSE Grade A-C</p> <p>Course/Option 2 - List 96 Qualifications</p> <p>BTEC (Pearson) Uniform Public Services Work Level 1, Level 2 and Level 3</p> <p>BTEC (Pearson) Work Skills Level 1, Level 2 and Level 3</p> <p>ASDAN CoPE</p> <p>ASDAN AoPE</p> <p>ASDAN Wider key skills</p> <p>ASDAN Employability</p> <p>ASDAN Personal and Social Development</p> <p>NCFE Uniform Public Services</p> <p>Course/Option 3 – Other Vocational Awards/Qualifications</p> <p>Sports Leader</p> <p>Duke of Edinburgh</p> <p>First Aid Qualification from St Johns Ambulance and British Red Cross,</p> <p>National Navigators Award</p> <p>SkillForce Prince’s Award</p> <p>SkillForce Curriculum</p>	
<p>Transport Arrangements</p> <p>The provision will be based in the locality (preferably in a host school/PRU).</p> <p>Students will access it via public transport or walking etc.</p> <p>For days/activities/trips out, transport will be provided.</p>	<p>Method of Feedback to home and school</p> <p>SkillForce will be constantly communicating with the school and parents, keeping them updated on the students’ progression, attendance, behaviour and assessment.</p> <p>We will report the student’s attendance to the school’s attendance officer twice a day, once at registration and again after lunch.</p> <p>We internally report on behaviour once a week. Behaviour reports will be shared with the school at the monthly meetings, but if a student is causing particular concern this can be made more frequently.</p> <p>Schools and parents will receive communication on assessment/progression via formal written reports three times a year.</p>



Course and Programme Information

Name of Organisation Sport Works (Yorkshire) Ltd	Location of Site/s Variable locations to suit the needs and requirements of the learner/purchaser
Contact Details Name: Richard King Tel: 07846853496 (Primary contact number) or 01484 489321 Email: richard@sportworksltd.co.uk Address: Sport Works (Yorkshire) Ltd, Heritage Exchange, 70 Plover Road, Huddersfield HD3 3HR	
Description of Service Provision Course/Option Details All of Sport Works Qualifications are registered on the QCF Framework. The delivery of courses is flexible to suit the needs of the learner and the school. The courses can be run concurrently to make up a full time week or separately as required. We can also offer additional courses not listed, if they are more appropriate for the learner. Deliverable Units <ul style="list-style-type: none"> • Sports Leadership • Functional Skills (Maths, English, ICT) • Sport • Diploma in Skills Towards Enabling Progression • Principal Learning in Sport and Active Leisure Suitability: Key Stage 3 and Key Stage 4 learners Course length: Full or part time. From 1 day per week over 10 weeks to 2.5 days per week over 38 weeks Notice Required: Usually 2 weeks (<i>urgent cases negotiable</i>)	
Times of the day Monday to Friday throughout normal school hours, although we are able to deliver in holiday periods and out of school hours at no extra charge.	Costs As programmes are tailored to the needs of individual purchasers, prices may differ according to the level of support required. These figures are an indication of the price per day for each learner (5 hours) and price per half day for each learner. Full day per learner £60 Half day per learner £40 One off registration fee per learner – fee is specific to Qualification (e.g. SLUK is £30 per learner) <i>1-1 support available, price on request. Advantageous method for providing specialist support staff.</i>
Qualifications Offered/Level Course/Option details SLUK Sports Leadership Level One (equivalent to one GCSE Grades D to G) SLUK Sports Leadership Level Two (equivalent to one GCSE Grades A to C) Apt Awards Diploma in Skills Towards Enabling Progression (equivalent to one GCSE Grades A to C) ED EXCEL Functional Skills in Maths, English and ICT ED EXCEL Principal Learning in Sport and Active Leisure (equivalent to one GCSE Grades A to C) City & Guilds Certificate in Sport Please note other qualifications are available to fit the timings and needs of schools and learners.	
Transport Arrangements The learner's home address and access to public transport routes are a key consideration when planning suitable venues. Sport Works tutors carry insurances to transport learners in their own vehicles if necessary.	Method of Feedback to home and school Sport Works shall submit a comprehensive pupil report to parent/guardian, school and Local Authority staff every half term. The report will contain information detailing attendance record, qualifications entered for, achievement to date, progress and improvement in academic achievement. Face to face meeting held with client/school/parent on termly basis.



Course and Programme Information Form

Name of Organisation The Hunslet Club		Location of Site/s Hillidge Road Leeds LS10 1BP	
Contact Details Name: Dennis Robbins Tel: 0113 2716489 Email: drobbins@hunsletclub.org.uk Address: Hillidge Road, Leeds LS10 1BP			
Description of Service Provision Course/Option Details:- We offer a range of vocational learning. We do not place any restrictions on the ability, background, special educational needs or behavioural difficulties of a student when recruiting to courses. All qualifications are from Section 96 and are also on the list of approved courses for inclusion in schools, 2014 performance tables. All qualifications are accredited by nationally recognised awarding bodies.			
Deliverable Units <ul style="list-style-type: none"> • Sport • Plumbing • Hair • Music DJing • Bricklaying • Car Mechanics • Beauty • Dance • Joinery • Bike Mechanics • Catering • Functional Skills 			
Suitability: Ages 14 to 16 in Key Stages 3 and Key Stages 4 Course length: Variable, full and part time Notice Required: Roll on; roll off (subject to availability)			
Times of the day Morning 09:30am – 12.00noon Afternoon 12:30pm – 15.00pm Students may attend either the full day or half day		Costs Costs are £14.50 per hour, £36.25 per half day and £72.50 per day Discounts available for groups of learners who study together on a course 8 student group is £11.00 per hour, half day £220, full day £440. 10 student group is £9.25 per hour, half day £231.25, full day £462.50 12 student group is £8.25 per hour, half day £247.50, full day £495.00 PPE to be provided by the school	
Qualifications Offered/Level BTEC Level 1 Engineering - Award (500/8859/2)/Certificate(500/0305/2)/Diploma(500/9859/7) Point scores - Award 12.5, Certificate 25, Diploma 100 Construction - Award(500/6600/6)/Certificate(500/6591/9)/Diploma(500/6668/7) Point scores - Award 12.5, Certificate 25, Diploma 100 Sport and Active Leisure - Award(500/4990/2)/Certificate(800/4989/6)/Diploma(500/6495/2) Point scores - Award 12.5, Certificate 25, Diploma 75 Home Cooking Skills - Award(500/8084/2) - Point scores - Award 6.25 Basic Cooking Skills - Award(600/1485/4) - Point scores - Award 12.5 General Cooking Skills - Certificate(500/7455/6) - Point scores - Certificate 25			

Certa Level 1

Skills for Further Learning and Employment -

Award(600/8480/7)/Certificate(600/8669/5)/Diploma(600/8672/5)

Point scores - Award 12.5, Certificate 50, Diploma 100

VTCT Level 1

An Introduction to the Hair and Beauty Sector

Award(500/6821/0)/Certificate(500/6839/8)/Diploma(500/8707/1)

Point scores - Award 12.5, Certificate 25, Diploma 75

NOCN

Functional Skills in English Entry 2(500/9334/4)/Entry 3(500/9320/4)/ Level 1(500/8499/9)

Point scores - Entry 2 - 6, Entry 3 - 7, Level 1 - 12.5

Functional Skills in Mathematics Entry 2(500/9335/6)/Entry 3(501/0834/7)/ Level 1(500/8501/3)

Point scores - Entry 2 - 6, Entry 3 - 7, Level 1 - 12.5

Transport Arrangements

Schools will be responsible for arranging transport for students to access the provision at the Club.

Arrangements can be made for groups to use our own transport, subject to availability.

Method of Feedback to home and school

We will email, to a nominated person at the home school to confirm attendance. Complete attendance records for students will be available for schools to request at any time.

Learner's predicted results available on request.

Progress reports to schools once a term plus achievements and certificates at the end of academic year.



Course and Programme Information

Name of Organisation TLG The Education Charity	Location of Site/s Hope Park, Bradford, BD5 8HH Bradford University STEM Centre, Bradford BD7 1DP
Contact Details Name: David Gilkerson Tel: 01274 900386 Email: dave.gilkerson@tlg.org.uk Address: TLG, Hope Park, Bradford, BD5 8HH	
Description of Service Provision 3 Courses/Options Available TLG offer a range of courses which includes our core offer of English, Maths and ICT as well as Science (delivered at Bradford University STEM centre) and vocationally related qualifications. We specialise in working with students who have emotional and behavioural difficulties and those with special educational needs. Our programmes can be tailored to individual need and if required can be part time if a student has suitable provision in place for the days they are not in our school. 1. Course/Option Details – Functional Skills, Science and Skills for Life Qualifications Curriculum support is provided for appropriate learners from Entry Level to level 2 Certificate. Deliverable Units <ul style="list-style-type: none"> • Maths • ICT • Skills for Employment and Further Learning • English • Science <p> Suitability: Young people aged 11 – 16 years Course length: Full or part time 25 hours per week over 5 days for a 38 week academic year. Notice Required: Usually 1 week subject to availability and the needs of the individual student </p> 2. Course/Option Details – BTEC Qualifications TLG offers BTEC Level 1 and 2 Awards for appropriate learners. Not all of the following qualifications will be available to all students. Deliverable Units <ul style="list-style-type: none"> • Business • Information and Creative Technology • Sport • Hospitality • Principles of Applied Science <p> Suitability: Young people aged 11 – 16 years Course length: Full or part time 25 hours per week over 5 days for a 38 week academic year. Notice Required: Usually 1 week subject to availability and the needs of the individual student </p> 3. Resent Programme TLG offer a one term 'Reset' programme for pupils who need a fixed period of time away from school to address issues that have led them to being in crisis in their mainstream education. It gives schools an opportunity to put reintegration support in place whilst the student is with TLG. During this time TLG will work on addressing the behavioural and social issues that have caused concern. The aim is to give students a range of tools and strategies that they can use when back in mainstream school so they can cope and not be at risk of further exclusions later in their educational career. <p> Suitability: Key Stage 3 learners Course length: Full or part time, over 1 term Notice Required: Usually 1 week subject to availability and the needs of the individual student </p>	

<p>Times of the day</p> <p>08.30am – 14.30pm</p> <p>The day is split into six 50 minute teaching sessions as well as target setting time and group time for review.</p>	<p>Costs</p> <p>£85 per day per student.</p> <p>£100 per day for individuals with an EHC plan or statement of SEN.</p> <p>Charge of £2.50 per day for lunch. This is charged to the referrer if the student is on free school meals.</p> <p>All materials and exam registration and certification costs are included in the day rate.</p>															
<p>Qualifications Offered/Level</p> <p>Course/Option 1</p> <p>English GCSE Maths GCSE</p> <p>Functional Skills English from Entry Level to Level 2 Functional Skills Maths from Entry Level to Level 2</p> <p>Aim Awards SEFL (Skills for Employment and Further Learning) QCF Qualification from Entry Level to Level 2 at Award, Certificate and Diploma size.</p> <p>Course/Option 2 – BTEC (Pearson) First Award in the following subjects and Levels</p> <table border="0" data-bbox="140 824 1043 976"> <tr> <td>Business</td> <td>Level 1 and Level 2</td> <td>600/4786/0</td> </tr> <tr> <td>Hospitality</td> <td>Level 1 and Level 2</td> <td>600/7044/4</td> </tr> <tr> <td>Information and Creative Technology</td> <td>Level 1 and Level 2</td> <td>600/4789/6</td> </tr> <tr> <td>Principles of Applied Science</td> <td>Level 1 and Level 2</td> <td>600/4787/2</td> </tr> <tr> <td>Sport</td> <td>Level 1 and Level 2</td> <td>600/4779/3</td> </tr> </table>		Business	Level 1 and Level 2	600/4786/0	Hospitality	Level 1 and Level 2	600/7044/4	Information and Creative Technology	Level 1 and Level 2	600/4789/6	Principles of Applied Science	Level 1 and Level 2	600/4787/2	Sport	Level 1 and Level 2	600/4779/3
Business	Level 1 and Level 2	600/4786/0														
Hospitality	Level 1 and Level 2	600/7044/4														
Information and Creative Technology	Level 1 and Level 2	600/4789/6														
Principles of Applied Science	Level 1 and Level 2	600/4787/2														
Sport	Level 1 and Level 2	600/4779/3														
<p>Transport Arrangements</p> <p>Students make their own way to the provision. Currently the majority arrive in taxis.</p>	<p>Method of Feedback to home and school</p> <p>Attendance registers are sent to the referrer by 9.30am each day. Parents are contacted by 9.00am if a student is absent.</p> <p>There is weekly contact with parents to update on progress, concerns and achievements.</p> <p>Academic progress is tracked each half term and published on our MIS which referrers have access to.</p> <p>Full written reports are sent to parents and referrers once a year.</p>															



Course and Programme Information Form

Name of Organisation Tute Education Limited	Location of Site/s Online provision
Contact Details Name: Stephen Carpenter Tel: 07974 010354 Email: Stephen.carpenter@tute.com Address: Unit 3, Chesney Court, Wrexham Technology Park, Wrexham, LL13 7YP	
Description of Service Provision 3 Courses/Options Available Tute Education is an online virtual classroom provision founded with the purpose of making great teaching available to all. Lessons are live and interactive, not pre-recorded and delivered by qualified teachers. Tute's services have been developed to accommodate a broad scope of needs presented by a wide range of learners. Our inclusive provision can be deployed as an enhancement of mainstream education, as an alternative means of reaching those who are disengaged or considered vulnerable, or to extend the curriculum for Gifted and Talented learners. Our new on demand Virtual Academy enables schools to meet day to day inclusion challenges in real time as they arise. Tute Education's core curriculum of typically 45 lessons per week covers 30 subject areas including Maths, English, Science, ICT and Humanities. Lessons are on demand and can accommodate up to 12 pupils. They run as a timetable so can be planned, and allow pupils to be booked onto sessions at just 24 hours notice. 1. Course/Option Details – Short Term Courses These short term courses are planned in direct consultation with teachers at the child's school. All students undergo pre and post assessment to demonstrate progress. Plans in conjunction with a school are then put in place for each learner to maximise the benefit of Tute Education services. Deliverable Short Term Units <ul style="list-style-type: none">• <i>Intervention services with short term targeted lessons with bespoke and agreed plans on areas of reinforcement</i>• <i>Gifted and Talented extension plans</i>• <i>Revision support services for exams</i>• <i>Foundation Gap support to Key Stage 3 learners</i>• <i>GCSE revision support</i>• <i>'A' Level revision support</i> Suitability: Key Stage 2 to Key Stage 5 Course length: Variable, full and part time Notice Required: 24 hours - Roll on; roll off (subject to availability) 2. Course/Option Details – GCSE and 'A' Level Courses The delivery of a range of GCSE and 'A' Level courses will lead to a full qualification in their chosen subject. Resources such as web-links, documents, video and images are also accessible through the Tute platform. Suitability: Key Stage 2 to Key Stage 5 Course length: Variable, full and part time Notice Required: 24 hours - Roll on; roll off (subject to availability) 3. Course/Option Details – Virtual Academy Instant access to 1500 live and interactive lessons each week delivered by qualified teachers. Designed to meet short term inclusion needs, increase school teaching capacity to accommodate individual requirements, respond to fixed term exclusion from school and extend the school day Suitability: Key Stage 2 to Key Stage 5 Course length: Lesson by lesson, short term solution Notice Required: Morning bookings for each day as needed for each school	

<p>Times of the day</p> <p>08.00am - 18.00pm Monday to Friday</p> <p>Evening and weekend classes are also available by prior arrangements.</p>	<p>Costs</p> <p>Scheduled lessons booking fee £12.50 per student per lesson, but for bespoke programmes this is £75.00 per lesson for up to 12 students.</p> <p>GCSE and 'A' Level Course costs per annum are as follows:</p> <table border="0"> <thead> <tr> <th><u>1 lesson per week</u></th> <th><u>2 lessons per week</u></th> </tr> </thead> <tbody> <tr> <td>1 learner £1000</td> <td>1 learner £1750</td> </tr> <tr> <td>2 learners £1600</td> <td>2 learners £2350</td> </tr> <tr> <td>3 learners £2200</td> <td>3 learners £2950</td> </tr> <tr> <td>4-6 learners £4000</td> <td>4-6 learners £5000</td> </tr> </tbody> </table> <p>Further discounts are available for larger groups of learners who study together on a course.</p> <p>Virtual Academy The costs are £12.50 per child for 90 minutes of blended synchronous and asynchronous learning</p>	<u>1 lesson per week</u>	<u>2 lessons per week</u>	1 learner £1000	1 learner £1750	2 learners £1600	2 learners £2350	3 learners £2200	3 learners £2950	4-6 learners £4000	4-6 learners £5000																																														
<u>1 lesson per week</u>	<u>2 lessons per week</u>																																																								
1 learner £1000	1 learner £1750																																																								
2 learners £1600	2 learners £2350																																																								
3 learners £2200	3 learners £2950																																																								
4-6 learners £4000	4-6 learners £5000																																																								
<p>Qualifications Offered/Level</p> <p>GCSE and 'A' Level Courses Available</p> <table border="0"> <thead> <tr> <th>GCSE Courses</th> <th>'A' Level Courses</th> </tr> </thead> <tbody> <tr> <td>Maths</td> <td>Maths</td> </tr> <tr> <td>English Language</td> <td>English Language</td> </tr> <tr> <td>English Literature</td> <td>English Literature</td> </tr> <tr> <td>Welsh First Language</td> <td>Welsh First Language</td> </tr> <tr> <td>Welsh Second Language</td> <td>Welsh Second Language</td> </tr> <tr> <td>Welsh Literature</td> <td>Biology</td> </tr> <tr> <td>Biology</td> <td>Chemistry</td> </tr> <tr> <td>Chemistry</td> <td>Physics</td> </tr> <tr> <td>Physics</td> <td>Computer Science</td> </tr> <tr> <td>Computer Science</td> <td>French</td> </tr> <tr> <td>French</td> <td>Spanish</td> </tr> <tr> <td>Spanish</td> <td>German</td> </tr> <tr> <td>German</td> <td>Italian</td> </tr> <tr> <td>Italian</td> <td>Latin</td> </tr> <tr> <td>Latin</td> <td>Mandarin</td> </tr> <tr> <td>Mandarin</td> <td>History</td> </tr> <tr> <td>History</td> <td>Geography</td> </tr> <tr> <td>Geography</td> <td>Religious Studies</td> </tr> <tr> <td>Religious Studies</td> <td>Sociology</td> </tr> <tr> <td>Sociology</td> <td>Psychology</td> </tr> <tr> <td>Psychology</td> <td>Business Studies</td> </tr> <tr> <td>Business Studies</td> <td>Economics</td> </tr> <tr> <td>Music</td> <td>Accounting</td> </tr> <tr> <td>Economics</td> <td>Electronics</td> </tr> <tr> <td>Drama</td> <td>Film studies</td> </tr> <tr> <td></td> <td>Law</td> </tr> <tr> <td></td> <td>Extended Project Qualification</td> </tr> </tbody> </table>		GCSE Courses	'A' Level Courses	Maths	Maths	English Language	English Language	English Literature	English Literature	Welsh First Language	Welsh First Language	Welsh Second Language	Welsh Second Language	Welsh Literature	Biology	Biology	Chemistry	Chemistry	Physics	Physics	Computer Science	Computer Science	French	French	Spanish	Spanish	German	German	Italian	Italian	Latin	Latin	Mandarin	Mandarin	History	History	Geography	Geography	Religious Studies	Religious Studies	Sociology	Sociology	Psychology	Psychology	Business Studies	Business Studies	Economics	Music	Accounting	Economics	Electronics	Drama	Film studies		Law		Extended Project Qualification
GCSE Courses	'A' Level Courses																																																								
Maths	Maths																																																								
English Language	English Language																																																								
English Literature	English Literature																																																								
Welsh First Language	Welsh First Language																																																								
Welsh Second Language	Welsh Second Language																																																								
Welsh Literature	Biology																																																								
Biology	Chemistry																																																								
Chemistry	Physics																																																								
Physics	Computer Science																																																								
Computer Science	French																																																								
French	Spanish																																																								
Spanish	German																																																								
German	Italian																																																								
Italian	Latin																																																								
Latin	Mandarin																																																								
Mandarin	History																																																								
History	Geography																																																								
Geography	Religious Studies																																																								
Religious Studies	Sociology																																																								
Sociology	Psychology																																																								
Psychology	Business Studies																																																								
Business Studies	Economics																																																								
Music	Accounting																																																								
Economics	Electronics																																																								
Drama	Film studies																																																								
	Law																																																								
	Extended Project Qualification																																																								
<p>Transport Arrangements</p> <p>As an online provision Tute Education eliminates transport costs and logistical issues by bringing education to the child.</p> <p>Learners simply require access to an internet enabled computer and a headset to access their classroom and teacher.</p>	<p>Method of Feedback to home and school</p> <p>Written evaluations every half term to assess pupil progress.</p> <p>Termly parent meetings via the Tute platform for individual feedback.</p> <p>Attendance provided for each lesson, absentees noted and highlighted to the school.</p>																																																								



Course and Programme Information

Name of Organisation Woodland Adventures Yorkshire C.I.C	Location of Site/s Buck Woods, Ainsbury Avenue, Thackley, BD10 0TL Springfield Centre, Idlethorpe Way, Thorpe Edge, BD10 9JB
Contact Details Name: Paul McHugh Tel: 07999 848190 Email: pmcq56@gmail.com Address: 6 Lynton Drive, Shipley, Bradford BD18 3DJ	
Description of Service Provision Courses/Options Available Woodland Adventures aim to improve the mental, emotional and physical health and well-being of the learner through engagement with the outdoors. The course will encourage and inspire individuals of any age through positive outdoor experiences. Learners will participate in the care and maintenance of local natural spaces and support others to use the outdoors as an effective learning and teaching tool. This course provides opportunities for people of all ages to increase knowledge of their local natural flora, fauna and wildlife whilst increasing their knowledge and awareness of environmental issues. Deliverable Units <ul style="list-style-type: none"> • <i>John Muir Award</i> • <i>Forest School</i> Suitability: Key Stage 3 Course length: One day a week for a whole term, per cohort Notice Required: One months notice, but learners will only be admitted onto the course within 2 weeks of a new cohort starting, unless the learner has attended a previous Forest School provision (subject to availability)	
Times of the day Usually 09.00am – 15.00pm but could include some flexibility	Costs £60 per day per pupil Lunch £3 per pupil or provided by the school Waterproofs and wellies £35 per pupil or provided by the school Centre Hire £60 per day
Qualifications Offered/Level John Muir Award = National Award Forest School OJC – Level 1	
Transport Arrangements Schools are expected to deliver learners to the provision	Method of Feedback to home and school Attendance and progress report provided to the school or directly to the learners home once a term. End of course celebration event with invite to parents and teachers.



Course and Programme Information

Name of Organisation YES Project (Youth Employability Scheme)	Location of Site/s Leeds, Wakefield and Bradford (various employers and community venues)
Contact Details Name: Al Osta Tel: 07855 079357 Email: al.osta@yes-sep.org and also simon.ackroyd@yes-sep.org Address: 24a Hammerain House, Hookstone Avenue, Harrogate HG2 8ER	
Description of Service Provision Course/Option Details The Youth Employability Scheme (YES) is an innovative work related, learning partnership project. It is aimed at students who are disengaged and underachieving in a traditional school or PRU environment who would benefit from the opportunity of a flexible, personalised curriculum working closely with an individual mentor. The scheme is part of a social enterprise organisation which is strongly committed to raising the aspirations of young people; equipping them with the skills, confidence and experience needed to be successful when they leave full time education and compete in the labour market in the future. Students work towards an Asdan Employability Qualification. The project arranges work placements with local employers. Project mentors will organise CV writing and interview preparation sessions, and work closely with students on their transition from Year 11 into Education, Employment and Training. YES project mentors provide a high level of support for students and families on the programme, conducting regular home and placement visits throughout the time the student is on the project. Deliverable Units <ul style="list-style-type: none"> • <i>Certificate in Employability</i> • <i>Workright Qualification</i> • <i>First Aid with St Johns Ambulance</i> • <i>Health & Safety in the Workplace</i> • <i>Barclays Life Skills</i> <p> Suitability: Years 10 and 11 Course length: 3 days per week Notice Required: 2/3 weeks </p>	
Times of the day 09.00am – 15.00pm (typical, although some students may start earlier/finish later depending on employer/placement)	Costs £34 per day, per student. All PPE provided by the project and will reimburse travel costs incurred by students.
Qualifications Offered/Level ASDAN Certificate in Employability - Entry Level E3 (QCF) 600/8015/2 Points - 14 Certificate in Employability - Level 1 (QCF) 600/8005/X Points - 25 Workright Qualification - Entry Level 3 Other qualifications First Aid Qualification with St Johns Ambulance Health and Safety in the Workplace (CIEH Level 1).	
Transport Arrangements Most work placements are sourced within walking distance of the student's home. Otherwise bus passes will be provided and paid for by the project, for students to travel to placements.	Method of Feedback to home and school Attendance information is provided to schools on a daily basis. Project Workers update schools on the students general progress/behaviour on a weekly basis through very regular phone/e-mail contact. Project workers also conduct home visits on a bi-weekly basis to update parents/carers on progress. Formal review meetings between parents, student, project worker and school contact take place every half term.



Course and Programme Information

Name of Organisation City Of Bradford YMCA	Location of Site/s 125 Thornton Road Bradford BD1 2EP
Contact Details Name: Liane Moore Tel: 01274 307228 Email: Liane.moore@bradfordymca.org.uk Address: 125 Thornton Road, Bradford BD1 2EP	
Description of Service Provision 5 Courses/Options Available <p>1. Course/Option Details – Y's Up Independent School</p> <p>Within the YMCA we have our own OFSTED registered school. The Y's Up School specialises in the engagement and development of young people who have challenging behaviours and we adopt a nurture approach when working with these learners and class sizes are small.</p> <p>All learners start with a two week trial period to ensure the service is the best fit for them. Breakfast and lunch is provided regardless of free school meal status and PPE is provided when required.</p> <p>Deliverable Units</p> <ul style="list-style-type: none"> • Maths • Science • PHSE • Woodwork • English • Geography • Arts & Crafts • Decorating Skills • IT • Cooking • Sports <p>Accreditation is only offered to those students who attend the minimum Guided Learning Hours required for each particular course of study.</p> <p>Suitability: Key Stage 3 and Key Stage 4 learners (aged 11 to 16) Course length: Minimum of two terms (full or part time) Notice Required: Roll on; roll off (subject to availability)</p> <p>2. Course/Option Details – Princes Trust 12 week Personal Development Programme</p> <p>The Prince's Trust Team Programme is a challenging, 12 week programme that helps develop confidence, motivation and employability skills in order to turn untapped potential into success. Young people work towards a recognised Prince's Trust qualification whilst developing their numeracy and literacy skills. During the 12 weeks team members complete a two week work placement, community project and a week-long residential.</p> <p>Suitability: Young people aged 16-25 years Course length: 12 weeks Notice Required: Pass a robust interview prior to being offered of place.</p> <p>3. Course/Option Details – Environmental</p> <p>Deliverable Units</p> <ul style="list-style-type: none"> • Shaping Spaces - The Shaping Spaces programme is an opportunity for young people to get their first experience of working in the environmental sector and to experience transforming landscapes in their local environment. This programme will either link into the national curriculum or be an opportunity to do a separate accreditation. Shaping Spaces is a programme designed around young people who find it hard to engage in the normal school setting and would benefit from more hands-on work which can be delivered around the needs of your students. Skills learnt include horticulture, construction and conservation techniques. • Forest Skills - Learners work with skilled leaders in a woodland setting learning about the woodland and bush craft skills. Sessions can be tailored to suit both learners and their educational requirements. <p>Suitability: Young people aged 14 to 25 years Course length: 3 hours a week (up to 2 days) for a term to an academic year Notice Required: Roll on; roll off (subject to availability)</p>	

4. Course/Option Details - Practical Skills - Workshop and Catering

This course combines practical skills with personal and social development. Learners will have the opportunity to develop or strengthen existing skills in catering or woodwork and/or decorating whilst also continuing to improve their Maths and English through embedded practical tasks.

As the majority of the sessions will be delivered within a training kitchen or workshop all learners must be deemed to be responsible to handle the equipment including sharp knives and hammers.

Suitability: Young people aged 14 -18 years
Course length: 12 week (up to 2 days per week)
Notice Required: Next available group start (Min 3 groups per year September, January & April)

5. Course/Option Details - Stepping Stones

To provide a programme of mentoring and activities to vulnerable young people in order to reduce the likelihood of involvement in criminal activity, anti-social behaviour, low school attendance and poor attainment. YMCA also engages with individuals around their own confidence and self- esteem issues.

Stepping Stones is able to work with schools during school time to plan and deliver interventions for those children in need of extra support. This can be bought in as and when needed, working with school staff to ensure cost effective and tailored packages of support are delivered. Sessions are organised as per the school requirements on a case by case basis depending on need.

Suitability: Young people aged 11 – 18 years
Course length: To be agreed with referring school
Notice Required: Roll on; roll off

Times of the day

Course/Option 1 - Y's Up

08:30am - 14:00pm Monday to Friday

Course/Option 2 - Princes Trust

10.00am - 16.00pm Monday to Friday

Course/Option 3 - Shaping Spaces and Forest Skills

Variable depending on the requirements of each school.

Course/Option 4- Practical Skills

09.30am - 15.00pm

Course/Option 5 - Stepping stones

Variable depending on need

Costs

Course/Option 1 - Y's Up Independent School placements

Weekly placement (£68 per day)	£ 340
Full time placement (per half term)	£ 2,150
Part time placement (per half term)	£ 1,150
Full school year (full time)	£12,900

Plus £30 to £100 exam registration, EV and certification. Price is dependent on level and credits achieved

Course /Option 2 - Princes Trust

12 week full time programme £3150 (including PPE and residential costs)

Plus £30 to £100 exam registration, EV and certification. Price is dependent on level and credits achieved

Course/Option 3 - Shaping Spaces

The basic price is £60 per person, per day

(Negotiable for shorter sessions. PPE and travel included)

Plus £30 to £100 exam registration, EV and certification. Price is dependent on level and credits achieved

Forest skills

Price is £45 per person, per session or £60 per person, per day

(Negotiable depending on size of group and specific programme requirements. PPE and travel included)

Plus £30 to £100 exam registration, EV and certification. Price is dependent on level and credits achieved

Course/Option 4 - Practical skills

Placement on Award programme £850
Placement on Certificate programme £1500

(All PPE, lunch and resources are included in the fees for this)

Plus £30 to £100 exam registration, EV and certification. Price is dependent on level and credits achieved

Course/Option 5 - Stepping Stones

£60 per hour delivery (group or one to one work)

Qualifications Offered/Level

Course/Option 1 – Y's Up

Individual units can be obtained in a variety of subjects including:-

Maths

English

Vocational Subjects

Personal Development

Arts Award - Bronze or Silver

ASCENTIS

Introduction to Construction - Level 1 Award or Certificate

NOCN

Introduction To Construction - Entry level to Level 1 Award or Certificate

Skills for Employment, Training and Personal Development - Entry level to Level 1 Award or Certificate
(Please note this is a tailor made qualification which includes modules in differing vocational specific areas alongside modules in numeracy, literacy and personal development)

Course/Option 2 – Princes Trust

Princes Trust - Level 1 or Level 2 Award or Certificate

Course/Option 3 - Environmental

John Muir Award

Youth Challenge and Youth Achievement Awards

Junior Achievement Award

AQA Unit Awards

Horticulture - Level 2 (provided we have a cohort of 6 young people)

Skills Towards Enabling Progression - NOCN Level 1 Certificate

Course/Option 4 – Practical Skills

Practical Skills - NOCN and ASCENTIS Level 1 Award (attending one day per week) or Certificate (attending 2 days per week)

Transport Arrangements

Students are expected to travel to the YMCA using public transport (day tickets or weekly bus passes provided)

Where independent travel is not possible YMCA have their own mini bus and trained drivers who (space permitting) can collect students each day and drop them off again.

Method of Feedback to home and school

Feedback to schools and parents/carers is via daily phone calls if requested or required. Weekly written reports are emailed, half termly face to face meetings take place and where necessary home visits, as required. YMCA can provide detailed information on attendance, progress and targets/achievements as requested.

APPENDIX 1 - THE LEARNER PLACEMENT AGREEMENT (LPA)

For an electronic word version of the LPA please refer to Page 5

Learner's Name	
Date LPA Issued	

1. PARTIES TO THE LPA

1.1 The School	
Name:	
Address:	
Postcode:	
Telephone:	
Email:	

1.2 The Provider			
Name of Organisation: (Registered Legal Entity)			
Registered Provider Business Address: (as per Legal Entity details above)			
Postcode:			
Telephone:		Fax:	
Email:			

2. LEARNER'S DETAILS

2.1 The Learner				
Name:				
Known As (if applicable):				
Date of Birth:		Gender:	Male <input type="checkbox"/>	Female <input type="checkbox"/>

Brief Description of Learner's Educational Needs / Aims	
--	--

3. PLACEMENT REQUEST

3.1 Placement Details	
Name & Address of Provider:	
	Postcode:
Course Required:	
Start Date:	
End Date:	
Additional Information:	

4. KEY CONTACTS

4.1 For the purpose of this LPA the named officer(s) of the school are as follows:			
ALLOCATED EDUCATION CONTACT PERSON:			
Name:			
Telephone:		Mobile:	
E-mail:			

4.2 For the purpose of this LPA other key contacts (if applicable) are as follows:			
Role:			
Name:			
Address:			
Telephone:		Mobile:	
E-mail:			
Role:			
Name:			
Address:			
Telephone:		Mobile:	
E-mail:			

5. PLACEMENT OFFER

5.1 Availability	
Placement Available:	Yes / No (Delete as appropriate)

5.2 The Learner will attend at the following address:	
Name & Address of Placement:	
	Postcode:
Telephone:	
Email:	

5.3 Course Details	
Course:	
Start Date:	
End Date:	
Days/Times of Week:	
Additional Information:	

5.4 Course Costs	
Course Costs:	
Costs Include: (administration/awarding body costs/materials/ equipment)	

6. KEY CONTACTS

6.1 For the purpose of this LPA the named officer (s) of the Provider are as follows:			
PRINCIPAL / HEAD TEACHER			
Name:			
Telephone:		Mobile:	
E-mail:			
DEPUTY			
Name:			
Telephone:		Mobile:	
Fax:			
E-mail:			
DESIGNATED SAFEGUARDING OFFICER			
Name:			
Telephone:		Mobile:	
Fax:			
E-mail:			

6.2 For the purpose of this LPA details of other key contacts (if applicable) are as follows:			
Role:			
Name:			
Address:			
Telephone:		Mobile:	
E-mail:			
Role:			
Name:			
Address:			
Telephone:		Mobile:	
E-mail:			

7. CONFIRMATION OF PLACEMENT

7.1 Confirmation of acceptance by the school of the placement offered by the provider in Section 5 above	
Placement Accepted:	Yes / No (Delete as appropriate)

The named Learner may not be moved to another placement by the Provider within or outside of the organisation without the prior written approval of the school.

7.2 Learner Information	
Name:	
Address:	
Postcode:	
Contact Telephone:	
Date of Birth:	
Parent / Carer Names(s)	
Address:	
Contact Telephone:	

Additional Documentation for Learner Attached (if applicable): (E.g. Statement of SEN, Education Health and Care plan, Individual Education Plan, Behaviour Risk Assessment)	
Specific Requirements of Learner: (free schools meals, health issues, special arrangements)	

7.2 Desired outcomes for Learner (this section is optional and/or may be completed at a later date)	
Outcome 1:	
Outcome 2:	
Outcome 3:	
Outcome 4:	

7.3 Admission Date: (DD/MM/YYYY)	
---	--

7.4 This LPA will be terminated automatically at the end of the academic year in which the Learner's sixteenth birthday falls or on the following date (unless there is an option to extend see below at 7.6)

DD/MM/YYYY	
-------------------	--

7.5 Option to extend the LPA from the end of the academic year in which the Learner's sixteenth birthday falls until the following date:

DD/MM/YYYY	
-------------------	--

8. SIGNATORIES TO THE LPA

BY SIGNING AND RETURNING THIS LEARNER PLACEMENT AGREEMENT THE PROVIDER AGREES that if this form is accepted and returned by the Contracting Body the Provider will enter into a legally binding contract with the Contracting Body to provide to the Contracting Body Services specified in and on the basis of this Learner Placement Agreement, incorporating the rights and obligations in the Call-off Terms and Conditions set out in the Framework Agreement entered into by the Service Provider and the Authority on **[INSERT DATE]**

8.1 The School

SCHOOL:			
NAME:			
POSITION:			
SIGNATURE:		DATE:	

8.2 The Provider

PROVIDER:			
NAME:			
POSITION:			
SIGNATURE:		DATE:	

APPENDIX 2 - Guidance on completing the Learner Placement Agreement Pro Forma

General

The Learner Placement Agreement ('LPA') Pro-forma document is to be used by the Council, Bradford secondary schools and the Bradford District PRU (each referred to as a “**Contracting Body**”) each time they may wish to purchase provision from the Bradford Framework Agreement for Off-Site Learning Provision.

Once this Learner Placement Agreement is agreed with the Provider it shall form part of the Call-Off Contract in accordance with the Framework Agreement.

It shall be a condition of the LPA that the Services to be delivered under the LPA shall be subject to the parties abiding by the Call-off Terms and Conditions and Services shall be delivered in accordance with the LPA and the ITT, which includes the Specification, Provider’s response and pricing for the relevant Services.

Completing the Pro-forma and the Ordering Procedure

Step 1 To make a referral for provision, the **Contracting Body** needs to complete the following Sections in the first instance:

Section 1 – complete part 1.1 only	Details of the Contracting Body
Section 2	Initial details of the learner
Section 3	Details of the placement required
Section 4	Details of key contacts

Step 2 The **Contracting Body** should then send the completed Learner Placement Agreement to the relevant Provider, in accordance with the **Ordering Procedure** (set out in Condition 8 of the Framework Agreement Terms and Conditions).

Step 3 On receipt of the completed Learner Placement Agreement pro-forma, the **Provider** should complete the following sections of the Learner Placement Agreement and if agreed by the Provider will produce two copies and sign each copy as confirmation of their offer to the Contracting Body of the placement:

Section 1 (part 1.2 only)	Details of the provider
Section 5	Placement availability and information (please note if the placement is unavailable complete part 5.1 only and return LPA to the school)
Section 6	Details of key contacts
Section 8 (part 8.2 only)	Signatory for the provider

Step 4 The **Provider** should then return both signed completed copies of the LPA to the **Contracting Body**.

Step 5 On receipt of the LPA copies (two copies); the **Contracting Body** will decide whether to accept the offer of provision. If the offer is accepted the **Contracting Body** should complete the following sections:

Section 7	Details of placement and learner
Section 8 (part 8.1 only)	Signatory for the school

And **then complete Step 6** below.

OR

If **the Contracting Body** decides not to accept the returned LPA offer from the **Provider**, it shall as soon as reasonably practicable **let the Provider know**.

Step 6 The Contracting Body should keep one signed copy of the LPA and return the other signed copy to the provider for their records.