

Specialist Teaching and Support Services (STaSS)

Education and Learning

Children's Services

Newsletter — March 2023

STaSS *“Our vision is to provide high quality support for all Bradford children and young people using a collaborative approach through transformational learning experiences so that they can flourish, make excellent holistic progress and successfully transition to responsible citizens”.*



Social



Communication



Interaction



Learning

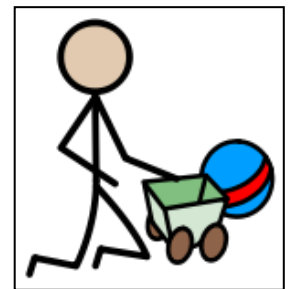
As we reach the end of the spring term, I can share that an amazing 192 schools have requested SEND Specialist Support. A link Early Years, Communication and Interaction, Learning Support or Social Emotional and Mental Health Specialist Teacher has been allocated, collaborative plans are in place and the support is well underway often supported by a Specialist Practitioner.

Early Years

There are now 56 Private, Voluntary and Individuals (PVI) Early Years settings signed up to receive SEND Specialist Support from an Access and Inclusion Officer. PVI settings benefitting from this service are receiving a bespoke package of support agreed with their Link Officer. Feedback from the PVI sector on SEND Specialist Support has been overwhelmingly positive; one setting describes their experience of the service offer as 'inspiring' for their staff, another describes how it has already enabled them to view current provision with a fresh set of eyes and there are many more.

As the service offer for each setting is not limited to individual children, all children with SEND are benefitting from specialist advice and support. Outcomes are agreed with each setting and can include training, modelling, advice, strategies and resources from Link Officers and Specialist Practitioners. Some settings would like support on evidencing the graduated approach using appropriate documentation - from moderating assessments to small step planning to strategies, resources and approaches for need-specific adjustments or interventions.

Likewise, feedback from Early Years support in schools has been extremely positive. Specific comments have been received about our responsive communication and our flexibility supporting the implementation of key strategies/interventions through training and modelling. The focus remains on supporting SENCOs through the graduated approach in the Early Years.



Communication and Interaction



As part of the SCIL Team Enhanced Offer we have extended our training offer to include the Autism Education Trust's *Making Sense of Autism* session at no cost to schools. Uptake has been fantastic; we have delivered this to 33 schools/832 delegates so far this term. We are also well into delivery of our Fundamentals for Inclusion CPD package.

SCIL Team Updates



Social



Communication



Interaction



Learning

Feedback received from delegates after training sessions has been very encouraging including:

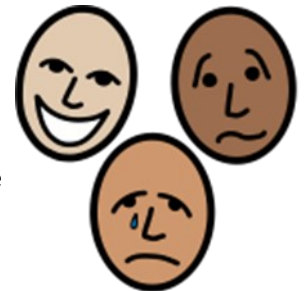
- I found the training enlightening.
- I have already had staff come to me and say they now understand the needs of children with autism much more after the training.
- The training included a good mix of teaching, videos and activities to maintain interest.
- Well paced, well pitched. Good range of activities. Engaging. Good examples used.
- Many staff have been talking about the training and the ways we support children in school who have traits of autism.
- Really interesting session, definitely will take the sensory overload information into account.

More details at [Courses & Training | Skills 4 Bradford](#)

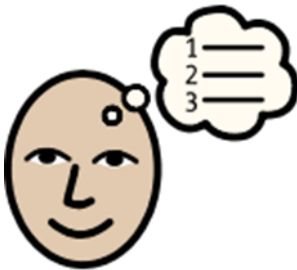
SEMH Team

As our SEND Support Offer continues to provide support for young people in schools with SEMH needs, we have been busy delivering a variety of training including Zones of Regulation, Emotion Coaching, STAR(R) Analysis, Attachment friendly Classrooms, SEMH Fundamentals, Boxall Assessment, to name a few.

Our virtual Nurture Network meets termly and anyone is welcome. All you need is an interest in finding out about nurture and networking with like-minded others. The next meeting is at 3.30 on 30th March. If you would like to join the meeting, here is a link to the booking page <https://skills4bradford.co.uk/Event/171982>



Learning Support



Our learning support teachers and specialist practitioners are enjoying building positive working relationships with colleagues in schools. These are developing into genuine collaborative partnerships and we are learning a lot from each other. As part of this, we have delivered unparalleled amounts of bespoke training, modelled strategies, developed resources, and provided individualised support to contribute towards developing inclusive practice in schools.

We are also delivering central training and have had an amazing response from schools for the next wave of the Multi-Sensory Literacy course pilot, which is booking up in record time! We received positive feedback from the last pilot and are excited to monitor the impact of the intervention in schools. Representatives from 22 schools across the district are also participating in our Fundamentals for Inclusion. As part of the course, they have been developing strategic plans to enhance their inclusive practice and are using the resources provided to disseminate key principles and strategies into their wider school. The training draws on up-to-date SEND research and focuses on removing barriers to learning through Quality First Teaching with an emphasis on Language, Literacy, Memory and Processing, Maths and Organisation. Schools are really valuing the approach and we have received some excellent feedback.

Medical Needs Hospital Education Service Newsletter

MNHES Newsletter – Easter 2023

Owlet Road, Shipley

We now have most pupils attending sessions at Owlet Road. Experience has shown that learning away from home with others will help all pupils to reintegrate into school when they are well enough. Those pupils who attend regularly at Owlet Road and learn with others are more likely to succeed in Post 16.

GCSEs 2023

Our Y11s are preparing for their GCSEs (which start in May!). All of them are working hard on revision sessions and lots of independent learning is taking place.

Whole Provision Visits

On 23rd March 2023 all pupils are being given the opportunity to attend one of the key stages end of term visits. The key purpose of these visits is to encourage social skills and give pupils opportunities that they may not have by not being able to attend their normal school. There are a range of visits taking place including bowling, Science & Media Museum and Cliffe Castle etc. Photos in the next newsletter!

25 Hour Curriculum

All pupils in MNHES are offered a 25 hour curriculum including English, Maths, Science, Art, PE, STEM, Independent Learning & Social Groups. Pupils benefit greatly from a non-core curriculum, giving them skills that will last throughout their life, developing a love of learning, finding hobbies or just taking time out to do something that they enjoy.



This offer is universal and personalised and reviewed regularly for each pupil. We encourage parents and pupils to access as many of these as possible.

There is now the offer of an Independent Life Skills course which will take place on a Monday morning. Pupils will be taught budget skills, cooking, keeping healthy etc. This is open to all KS3 & KS4 pupils.

Pupil Numbers

There are currently over 150 pupils attending MNHES due to not being able to access school for medical needs. Wonderfully, there have been over 40 pupils, since Christmas 2022, who have successfully transitioned back into an educational provision.



Hospital Provisions

There are also nearly 50 regular and recurring children attending the hospital schools at AGH & BRI as well as education offered to any child admitted to either children's ward. These pupils attended a provision visit to the Media Museum in January.

SCIENCE+ MEDIA MUSEUM

The staff in the hospitals are continuing their annual outreach visits to the on roll schools of these children so that we can make sure that we are all working together.

S19

S19 pupils and teachers have been really busy since Christmas with many different activities including baking, ice skating, bowling and flower pot painting on top of all their normal learning!



All pupils are offered whole week provision and the creative curriculum is personalised to each child. Children stay with S19 whilst a permanent school place is found.



Children's Sensory and Physical Needs Team

STASS Newsletter Easter 2023

Support Team for Deaf Children

The STDC use a range of technology to allow deaf children to link up with other deaf children across Bradford in a range of settings. Here we have Emilia, Yr. 6 at St Antony's Catholic Primary School talking to Zoe, Yr. 7 St Bede's and St Joseph's Catholic School. Emilia was able to ask lots of questions about starting at secondary school. Zoe was happy to share her experiences of being at 'big school'.



Grove House Primary Resourced Provision for Children and Young People with Vision Impairment

On the 8th March the children with a vision impairment in the Resourced Provision at Grove House had a fun filled open afternoon where parents came into school to see their progress.

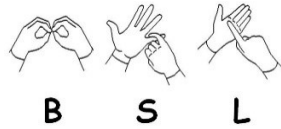
Each child showcased one skill to parents so they could observe this but also see other skills demonstrated. There were plenty of opportunities for parents to talk to the teaching, support staff and other professionals who are also involved in their health and education. We got some fabulous feedback as they were impressed with all the skills demonstrated by our children.



One parent said:

“The whole afternoon was very useful, I particularly liked the introduction because I got to see most of the staff and understand their roles. It was fantastic to see the variety of tactile teaching and learning activities that the children participate in and see them so confident”

Sign Language Week



Sign Language week was 13th – 17th March. Cullingworth Primary School enjoyed learning the signs for fruits as part of an activity led by Mary Robinson, Deaf Instructor in the Support Team for Deaf Children and one of our pupils at Beechcliffe taught her classmates the signs for ‘family’. Amy was very proud of herself after this.

Sign Bilingual Conference

On Monday 27th February the Sign Bilingual Consortium hosted an online conference for schools and services across the country who provide sign bilingual education to Deaf children. It was attended by approximately 160 people. Karen Turner, Service Manager – Deaf and MSI Children delivered a key note presentation on Attachment, ACES and Deaf children, which was well received and feedback has been extremely positive.

Vision Impairment Outreach Team



On Wednesday 8th March a group of 10 pupils with vision impairment from 5 different secondary schools travelled by train into Leeds and visited the Apple Store for an iPad/iPhone accessibility training session. They learnt about voice over, Siri, spoken content and shortcuts. After the training session the group enjoyed lunch in the Trinity Kitchen and got the train back to Bradford.

Swain House Resourced Provision for Deaf Children

The annual Swain House RP pantomime took place in February. The children spent hours and hours rehearsing and learning to perfect the script. They all worked hard to make the end results entertaining and fun to watch by all the staff and parents.



Girlington Signing Choir

Holly Marland and Danny Lane, musicians from the Music and the Deaf charity, have been carrying out signing choir sessions with Reception, Key Stage 1 and Key Stage 2 deaf pupils in the Resourced Provision at Girlington Primary School. Every week, the pupils have participated in various musical activities including signed songs, singing, body percussion and playing a variety of musical instruments. Recently, they had a go at playing the Kora, which is an African stringed instrument and have been creating their own songs inspired by the journey of a river travelling through the world. They have shown incredible enthusiasm for music over the past few weeks, developing rhythmic skills, as well as language through song writing and building confidence in communicating their own ideas to their group. Danny and Holly will be developing their music over the next few months and then perform this in the summer. We look forward to the pupils performing!



Hanson Delta Academy – Resourced Provision for Deaf Children and Young People

Year 11 students at Delta Hanson Academy have been offered the opportunity to participate in weekly swimming lessons during this term. They have been practising the fundamental skills required to float on their fronts and backs. They have enjoyed it significantly so far and are always eager for the next lesson. This opportunity has afforded the Year 11's the chance to acquire a vital life skill that they can carry with them for the rest of their lives.

In addition to swimming classes, the Year 11s have been exploring life after secondary school. In order to choose what and where they would like to go beyond the age of 16, we have been exploring various courses that interest them and visiting various colleges to get a feel for 'college life.'