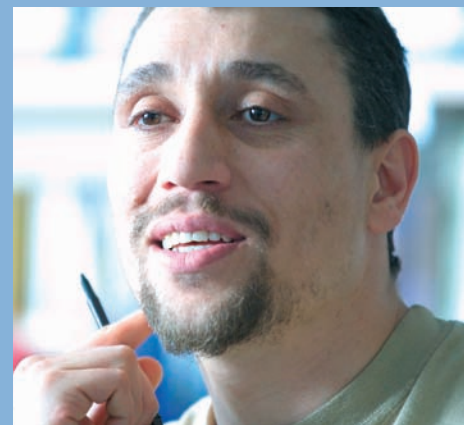


Bilingualism in Education

PGCert, PG Dip, MEd
Distance Education

Is this programme for you?

The Bilingualism in Education programme works through an established and impressive partnership between the School of Education and Northern Association of Support Services for Equality and Achievement (NASSEA), and aims to help teachers and other professionals working in educational contexts to work more effectively with children and young people learning English as an additional language.



What does the programme offer?

First Year Modules:

1 Introduction to Bilingualism in Education:

Issues and practice concerning the bilingual learner in the classroom. Students develop a critical understanding of how linguistic, cognitive, social and cultural factors impact on second language learning, and demonstrate a range of approaches to curriculum planning for language and content teaching of bilingual/English as an additional language (EAL) learners in a mainstream classroom context

2 Academic Language and Learning

for Bilingual Learners: A more in-depth look at 'language conscious' teaching, focusing on English as an additional language development in curriculum areas. Students critically evaluate issues and debates regarding bilingual education, theory, policy and practice, and demonstrate a critical knowledge and awareness about classroom practice in relation to the teaching and learning of English in curriculum-focused mainstream classrooms.

3 Teaching and Learning in EAL:

In this module students systematically investigate a professional issue relating to bilingualism in educational settings. They use critical perspectives on the collection of evidence, methods of inquiry and conclusions of the investigation, and reflect on the outcomes of the study for bilingual learners for professional practice.

Second Year Modules:

For the first module in the second year students

can choose from either 'Bilingualism and Special Needs', or 'Portfolio of Practice'. The second module in the second year is 'Management and Leadership in EAL', and students progressing to MEd also complete a research module in preparation for their dissertation in the third year. Students who wish to study for PGDip complete a school based study in term 6.

4a Bilingualism and Special Needs:

In this module students critically reflect on perceptions of disability, and perceptions of bilingual learners with disability, and the implications for education. They focus on the scope of special needs in general and some in particular, and engage with the educational management of special needs for bilingual learners in schools and classrooms. Students critically evaluate the use of standardised tests with ethnic minority pupils, and the use of assessment evidence to inform teaching and plan appropriate provision.

or

4b Portfolio of Practice:

Students develop a portfolio of work to comment and reflect on what they have learned from the preceding modules in the programme of study. The portfolio of work enables them to improve practice in a specific area of their professional context, and to demonstrate knowledge and understanding of the job of being an effective practitioner working with bilingual pupils.

5 Management and Leadership in EAL:

Students develop knowledge and understanding of theories of management and theories of change with a focus on linguistic and ethnic diversity issues, with a focus on managing and creating teams. They develop skills in effectively creating, managing and

sharing information and knowledge of staff development in the subject specialism of EAL. Students learn how to implement and evaluate local initiatives related to EAL issues and to disseminate good practice within and beyond their schools and institutions.

Study and Awards

PGCert	Modules 1–3
PG Dip	Modules 1–5 plus school-based study
MEd	Modules 1–5 plus research module and dissertation

Those completing the PGDip do a school based study in term 6 and those following an MEd complete a research module in preparation for their dissertation.

How do you study?

The programme is offered by distance education. Each student has a personal tutor in a regional tutor group, which meets on a regular basis. Study is supported through study packs, tutorial groups, telephone, and email contact which allow students to learn with each other. There is a University based programme launch day in September.

How do I apply?

If you require an application form please contact the School of Education on 0121 414 4866 or at education@bham.ac.uk giving your name and address. An early application is advised as places are allocated on a first come first served basis.

Learn more

Further details are available from the programme director, Professor Adrian Blackledge, on a.j.blackledge@bham.ac.uk, or 0121 415 8221. For further information on current fees, funding, admissions etc, please see our website at www.education.bham.ac.uk