



School Attendance Network Meeting 10th November 2023

John Leese

Education Safeguarding Service Manager

**Education Safeguarding Team | Attendance, Licensing, & Prosecution
Service**



City of
BRADFORD
METROPOLITAN DISTRICT COUNCIL



Booking onto Training and future dates

<u>Date</u>	<u>Venue</u>	<u>Time</u>	<u>School Phase</u>
Friday 10th November 2023	Margaret McMillan Tower OR Online -	10:00am – 1pm	All Schools
Friday 15th March 2024	Margaret McMillan Tower OR Online	10:30am – 1.30pm	All
Friday 21st June 2024	Margaret McMillan Tower OR Online	10:30am – 1.30pm	All





Programme

Welcome / housekeeping / Introductions
John Leese – Education Safeguarding Service Manager

10:30

Education Access Team – Amy Petschak (Team Manager)

10:45

Break

11:20

Emotionally Based School Avoidance (EBSA) – Updates
Vicki Morris - Specialist Senior Educational Psychologist (EBSA)

11:40

Illness Absence - Networking Session

12:10

Questions

13:10



City of
BRADFORD
METROPOLITAN DISTRICT COUNCIL



Bradford Schools Online (BSO)



Bradford Schools Online

+ Education Partnerships Team

- Education Safeguarding

+ Attendance

+ Child Licensing

+ Education Access

Elective Home Education

+ Educational Psychology

+ Emergencies

- Attendance

Attendance Resources and Network Information

Attendance Traded Offer

Education Safeguarding - Attendance services

Modified / Part-Time Timetables

Penalty Notices

Pupil Registration

Staged Intervention Approach to Poor Attendance

<https://bso.bradford.gov.uk/section/education-safeguarding/attendance/53>



City of
BRADFORD
METROPOLITAN DISTRICT COUNCIL



DfE Attendance Dashboard

- Published every fortnight available here:
<https://department-for-education.shinyapps.io/pupil-attendance-in-schools/> .
- I have provided Bradford and England data for Primary and Secondary for comparison in the next 4 slides.
- Roughly Primary Attendance is 0.5% (↓) below the national average, and secondary is 2.4% (↑) below the national average.



Headline figures for the year to date -2023-09-11 to 2023-10-20: primary state-funded school attendance at local authority level (Yorkshire and The Humber, Bradford)

For this breakdown, in the latest week 92% of schools submitted data, though this has varied throughout the year-to-date.

Data was last updated on 2023-11-09 and is next expected to be updated on 2023-11-23. The latest full week of data for this breakdown was the week commencing 2023-10-16.

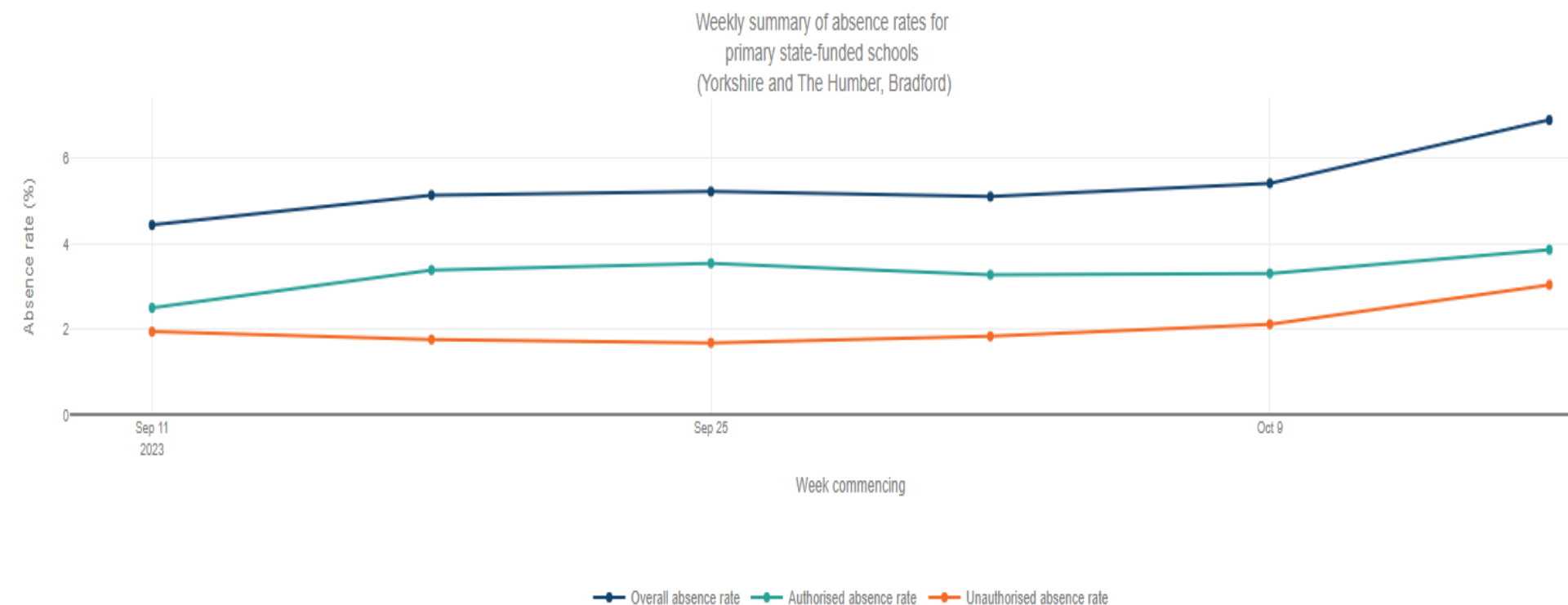
Attendance and absence across year to date

Attendance and absence rates presented here are calculated across all sessions in the year to date.

- 94.7% of sessions were recorded as attending in Bradford (compared to 94.9% of sessions in Yorkshire and The Humber)
- 5.3% of sessions were recorded as absence in Bradford (compared to 5.1% of sessions in Yorkshire and The Humber)
- 2.7% of sessions were recorded as illness in Bradford (compared to 2.5% of sessions in Yorkshire and The Humber)

Overall, authorised and unauthorised absence rates across the year to date -2023-09-11 to 2023-10-20

Absence rates presented here are calculated on a weekly basis. Each point on the chart shows an absence rate calculated across all sessions in the given week.



Headline figures for the year to date -2023-09-11 to 2023-10-20: primary state-funded school attendance at national level

For this breakdown, in the latest week 85% of schools submitted data, though this has varied throughout the year-to-date.

Data was last updated on 2023-11-09 and is next expected to be updated on 2023-11-23. The latest full week of data for this breakdown was the week commencing 2023-10-16.

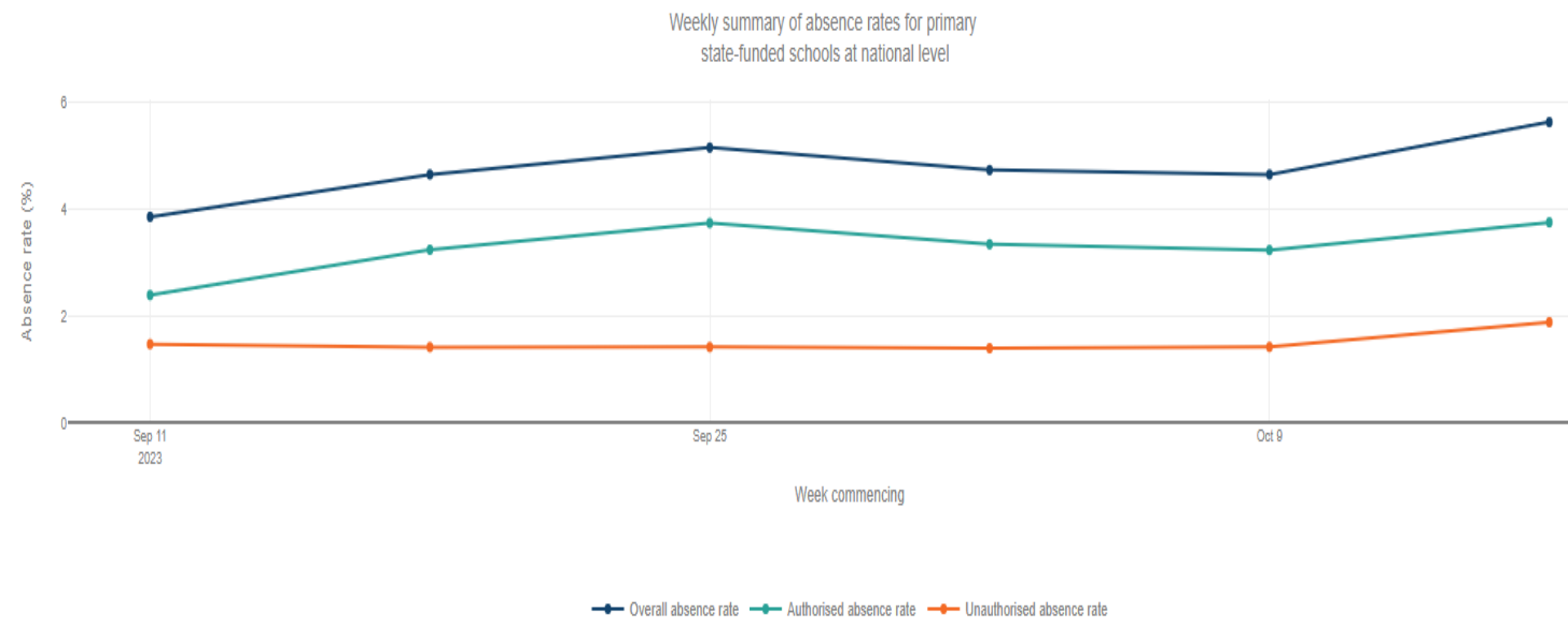
Attendance and absence across year to date

Attendance and absence rates presented here are calculated across all sessions in the year to date.

- 95.2% of sessions were recorded as attending
- 4.8% of sessions were recorded as absence
- 2.6% of sessions were recorded as illness

Overall, authorised and unauthorised absence rates across the year to date -2023-09-11 to 2023-10-20

Absence rates presented here are calculated on a weekly basis. Each point on the chart shows an absence rate calculated across all sessions in the given week.



Headline figures for the year to date -2023-09-11 to 2023-10-20: secondary state-funded school attendance at local authority level (Yorkshire and The Humber, Bradford)

For this breakdown, in the latest week 89% of schools submitted data, though this has varied throughout the year-to-date.

Data was last updated on 2023-11-09 and is next expected to be updated on 2023-11-23. The latest full week of data for this breakdown was the week commencing 2023-10-16.

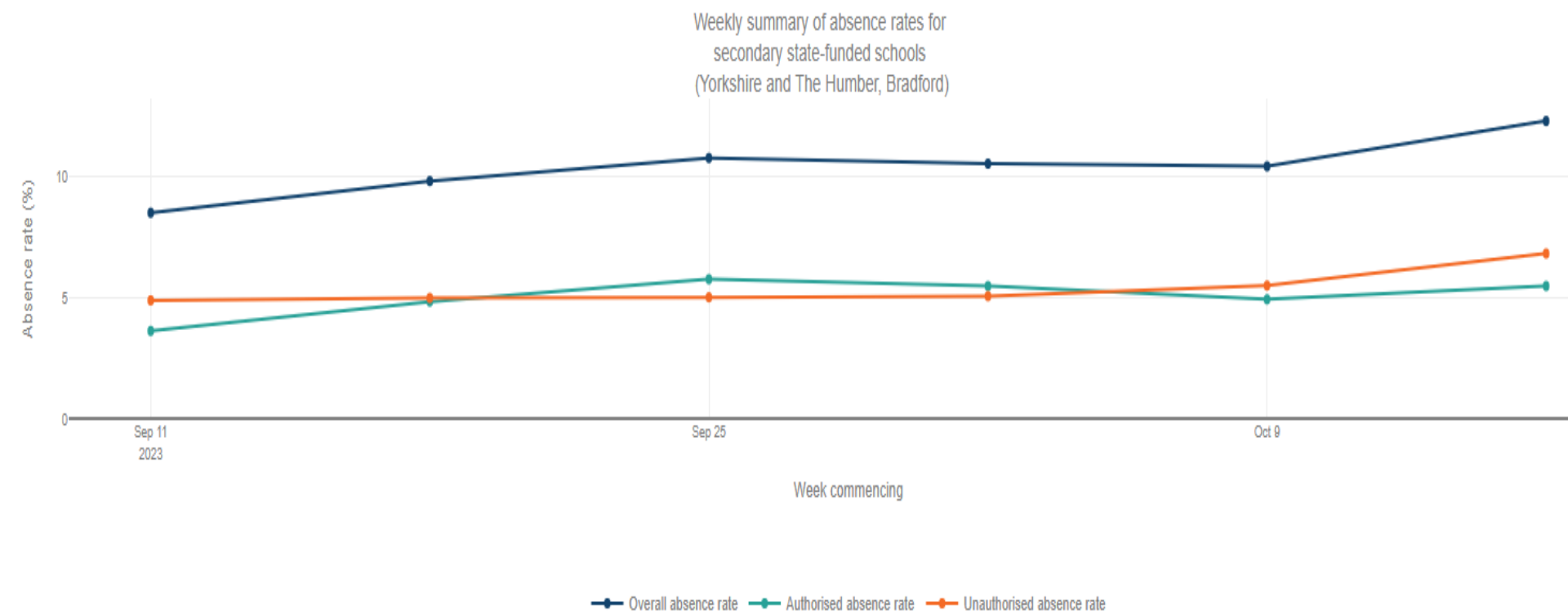
Attendance and absence across year to date

Attendance and absence rates presented here are calculated across all sessions in the year to date.

- 89.6% of sessions were recorded as attending in Bradford (compared to 91.3% of sessions in Yorkshire and The Humber)
- 10.4% of sessions were recorded as absence in Bradford (compared to 8.7% of sessions in Yorkshire and The Humber)
- 3.5% of sessions were recorded as illness in Bradford (compared to 3.5% of sessions in Yorkshire and The Humber)

Overall, authorised and unauthorised absence rates across the year to date -2023-09-11 to 2023-10-20

Absence rates presented here are calculated on a weekly basis. Each point on the chart shows an absence rate calculated across all sessions in the given week.



Headline figures for the year to date -2023-09-11 to 2023-10-20: secondary state-funded school attendance at national level

For this breakdown, in the latest week 76% of schools submitted data, though this has varied throughout the year-to-date.

Data was last updated on 2023-11-09 and is next expected to be updated on 2023-11-23. The latest full week of data for this breakdown was the week commencing 2023-10-16.

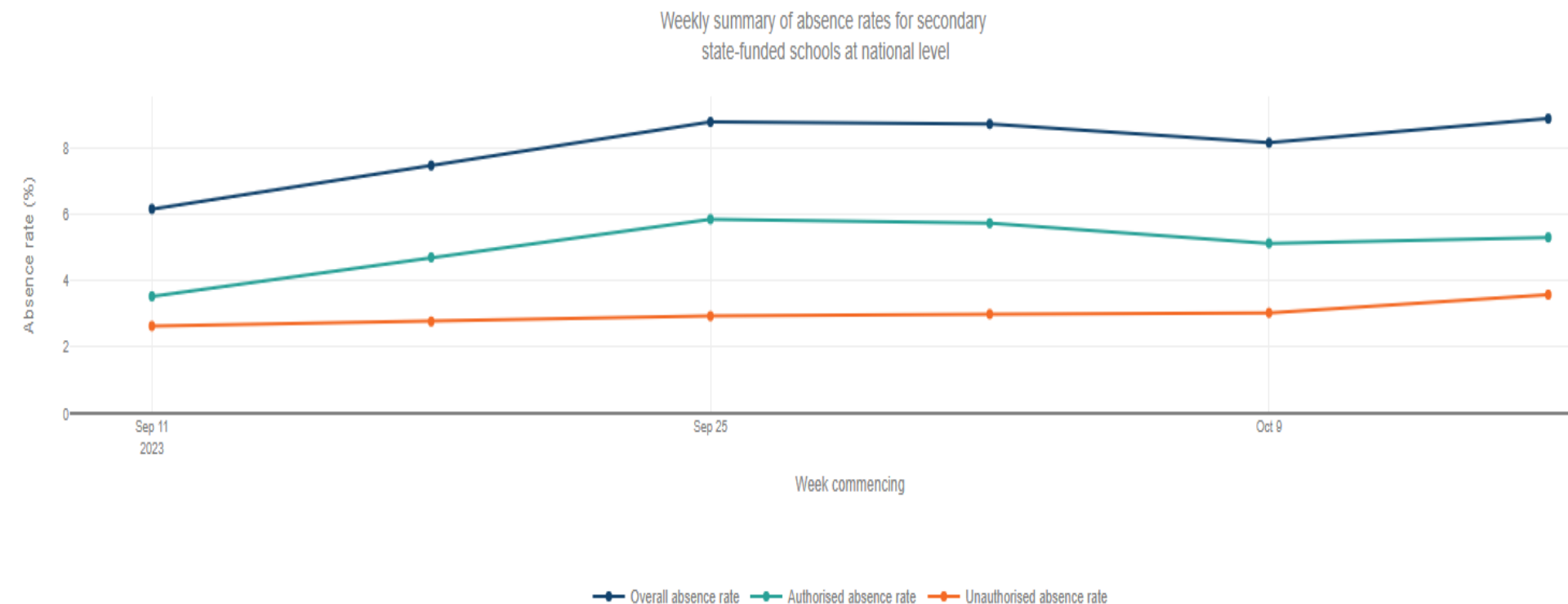
Attendance and absence across year to date

Attendance and absence rates presented here are calculated across all sessions in the year to date.

- 92% of sessions were recorded as attending
- 8% of sessions were recorded as absence
- 3.8% of sessions were recorded as illness

Overall, authorised and unauthorised absence rates across the year to date -2023-09-11 to 2023-10-20

Absence rates presented here are calculated on a weekly basis. Each point on the chart shows an absence rate calculated across all sessions in the given week.





Latest Attendance Data

Attendance Rate	2021-22 (Census)	Aut-Spr 22-23 (Census)	2022-23 (as of 1 st Nov 23)*
Primary	93.1% 142 nd out of 151	93.2% 145 th out of 151	94.3%
Secondary	88.4% 150 th out of 151	88.6% 150 th out of 151	90.3%
Special	84% 136 th out of 149	83.9% 137 th out of 149	86.3%

*Taken from DfE Live Attendance Dashboard – Data is unvalidated and represents around 92% of schools



City of
BRADFORD
METROPOLITAN DISTRICT COUNCIL



Bradford - Working Together to Improve School Attendance The Attendance Support Team

John Leese

Education Safeguarding Service Manager

**Education Safeguarding Team | Attendance, Licensing, & Prosecution
Service**



City of
BRADFORD
METROPOLITAN DISTRICT COUNCIL



Emotionally Based School Avoidance

- EBSA Lead Appointed - Victoria Morris (Education Psychology)
- Devise and Deliver District wide EBSA strategy (based on existing models from elsewhere) (September - October 2023)
- Establish district EBSA team (EP / Teacher / Assistant EP / MH Professional) (October - December 2023)
- Deliver services for EBSA YP (January 2024)
- Evaluate impact of project (June 2024)





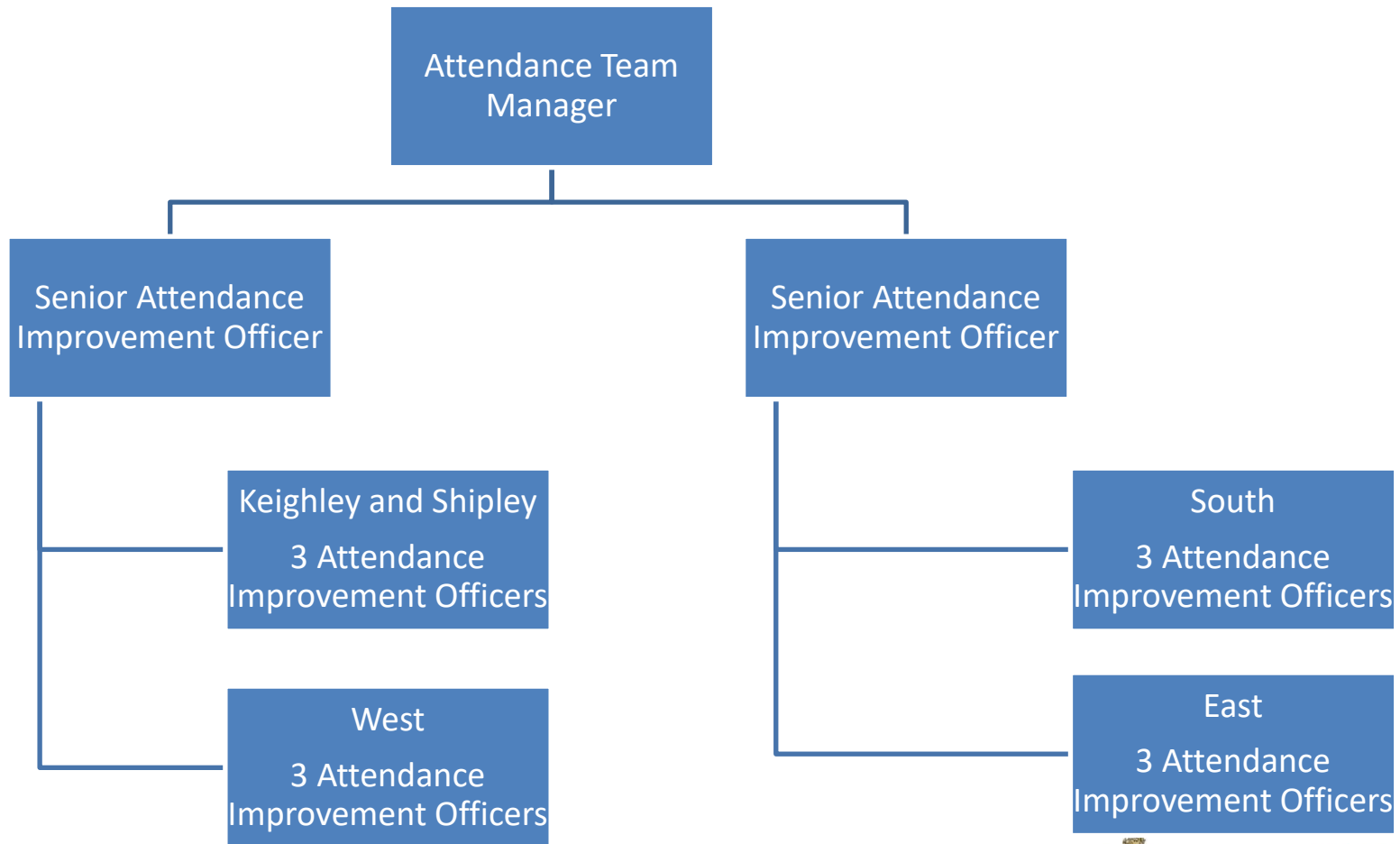
Attendance Support Team: September 2023

- Team will consist of 12 Attendance Improvement Officers, managed by 2 Senior Attendance Improvement Officers
- Teams will be aligned to the existing family hub localities (East, West, South, Keighley and Shipley)
- Focus will be on:
 1. Delivering the expectations set out in Working Together to Improve School Attendance
 2. Working with the Family Hubs and Early Help Coordinators to ensure families receive the 'right support at the right time'.





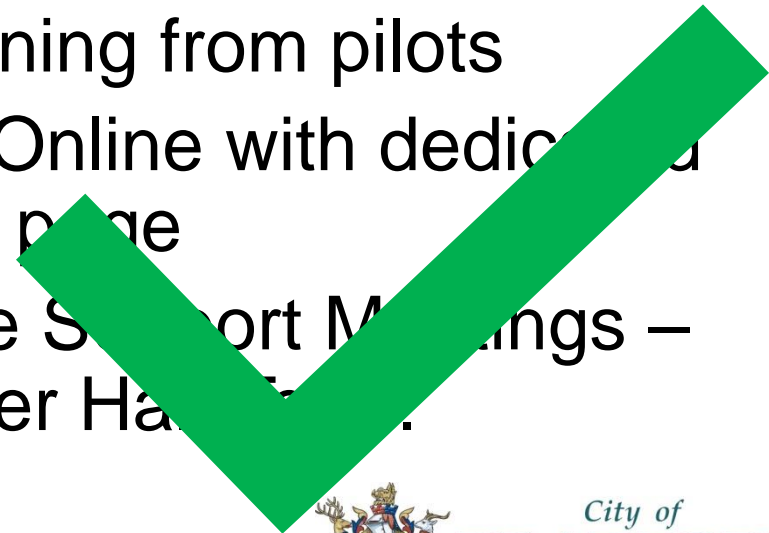
Attendance Support Team Structure





To do list...

- 5 New Attendance Improvement Officers starting on 4th September
- Allocate Attendance Improvement Officers to localities / schools
- Complete Attendance Improvement Officer Induction / Training – Learning from pilots
- Update Bradford Schools Online with dedicated Attendance Support Team page
- Roll out Termly Attendance Support Meetings – aiming to start after October Half Term.



Core offer to be provided free of charge to all schools in the area

<p>Communication and advice: regularly bring schools together to communicate messages, provide advice and share best practice between schools and trusts within the area.</p>	<p>Including:</p> <ul style="list-style-type: none"> - Guidance on how partners will work together - Named point of contact for each school - Answering queries from school based staff - Bringing schools together to share best practice
<p>Targeting Support Meetings: hold termly conversations with schools, using their attendance data to identify pupils and cohorts at risk of poor attendance and agree targeted actions and access to services for those pupils.</p>	<p>Including:</p> <ul style="list-style-type: none"> - Meeting at least termly with each school in the local authority area (either through an existing meeting such as a team around the school, or as a standalone attendance led meeting) - Signposting schools to relevant services and voluntary sector partners - Agreeing joint action plans for severely absent pupils (where there are out of school barriers) - Agreeing joint actions for persistently absent pupils (where necessary) - Agreeing any legal action to be taken forward -
<p>Multi-disciplinary support for families: provide access to early help support workers to work intensively with families to provide practical whole-family support where needed to tackle the causes of absenteeism and unblock the barriers to attendance.</p>	<p>Including:</p> <ul style="list-style-type: none"> - Providing access to existing support systems where appropriate – including early help, social care, SEND etc - Advising the family's lead practitioner on any attendance elements of the family's plan - Acting as lead professional in the single family plan where an LA team is the most appropriate to do so (e.g. a housing issue)
<p>Legal intervention: take forward attendance legal intervention (using the full range of parental responsibility measures) where voluntary support has not been successful or engaged with.</p>	<p>Including:</p> <ul style="list-style-type: none"> - Parenting contracts - Education Supervision Orders - Building attendance into child in need or child protection plans where relevant - Issuing fixed penalty notices - Parenting Orders - Taking forward attendance prosecutions

The Attendance Support Team does not replace our Traded Attendance Improvement Team!



City of
BRADFORD
METROPOLITAN DISTRICT COUNCIL

Examples of areas of practice that local authorities could continue to trade above and beyond the core offer

<p>School processes: acting on behalf of the school to fulfil their day to day expectations as set out in section 1 of <i>Working together to improve attendance</i>.</p>	<p>For example:</p> <ul style="list-style-type: none"> - First day calling - Home visits, calls and/or sending out letters from the school - Late gates - Parent drop ins or attendance services - Providing advice and support on attendance at parents' evenings - Running attendance reward and recognition systems - Attendance assemblies - Analysing the school's data
<p>Casework on behalf of the school: delivering the attendance work with individual pupils and families that is expected of the school (rather than of the local authority and other partners as defined in section 4).</p>	<p>For example:</p> <ul style="list-style-type: none"> - Contacting families and understanding what the barriers to attendance are - Setting up and leading attendance meetings with families - Developing in school reasonable adjustments and initial attendance action plans - Completion of referrals to other services, including early help assessments
<p>Training: one off or ongoing training delivered to school staff on attendance.</p>	<p>For example:</p> <ul style="list-style-type: none"> - Training for school based staff on attendance law, casework or application of guidance - Training for governors on their responsibilities - Training on how to analyse data and make use of attendance data in day to day practices - Professional supervision of attendance staff employed by the school or trust
<p>Audits and attendance management support: ad hoc work with schools to support development of new systems, policies and processes</p>	<p>For example:</p> <ul style="list-style-type: none"> - Intensive work with a school to develop a whole school strategy - Help developing an attendance policy - Policy reviews - Support with developing day to day processes - Register audits

The Attendance Support Team does not replace our Traded Attendance Improvement Team!



City of
BRADFORD
METROPOLITAN DISTRICT COUNCIL



City-Wide Attendance Charter Event

Thursday 7th December 2023 @ LifeCentre Events, Wapping Road, Bradford

- You have the option to join us for the morning (08:30am – 12:00pm) or afternoon (12:30pm – 4pm), please ensure you choose the right ticket for the session you wish to attend.
- You may book up to 3 tickets for your school/setting/service/team.
- We have room for up to 300 people for each session, and we're expecting the event to be well attended. Don't delay, book your place today!

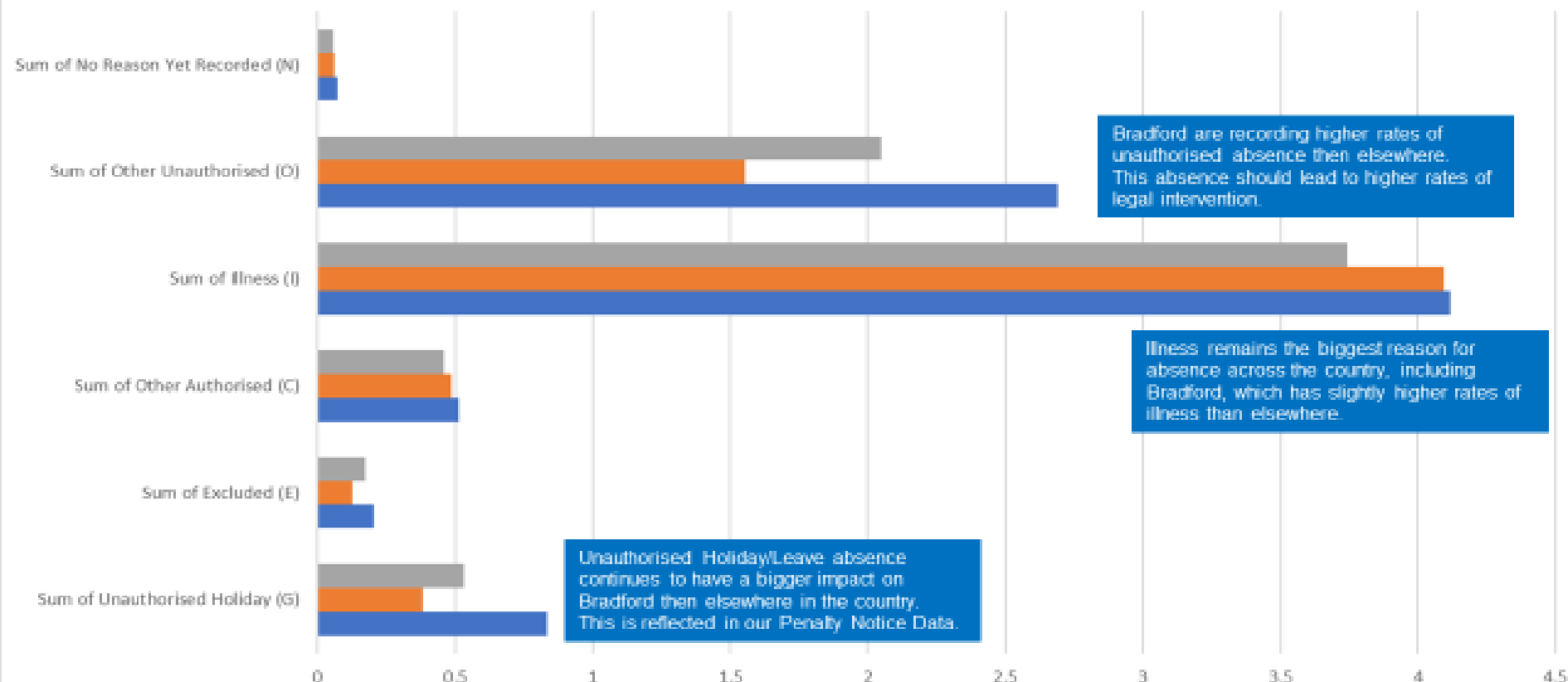


City of
BRADFORD
METROPOLITAN DISTRICT COUNCIL



Networking Activity

Reasons for Absence - All Pupils - Autumn/Spring 2022-23



	Sum of Unauthorised Holiday (G)	Sum of Excluded (E)	Sum of Other Authorised (C)	Sum of Illness (I)	Sum of Other Unauthorised (O)	Sum of No Reason Yet Recorded (N)
Yorkshire and The Humber	0.529653232	0.173954817	0.459963498	3.745704244	2.046775653	0.055094953
England	0.381305659	0.125320076	0.487001196	4.092871223	1.555549058	0.061047251
Bradford	0.836091363	0.204425304	0.511450084	4.11570694	2.690923921	0.071185439



Networking Activity

- Illness remains the largest single reason for absence, both in Bradford and Nationally.
- In your groups:
 1. Share your own individual school's approach to managing illness absence. I.e. What process do you follow, how do you challenge continued illness, how do you support families and ensure continuity of education?
 2. Where can you go for support and resources to help you manage illness absence.
 3. As a group, put your ideas together to create a "perfect" model of managing absence.

